

Reconciling and Posting Individual Edit Versions.

After the editors have finished editing their versions, the administrator needs to run the Compare_Versions and Condo_Compare_Versions programs to capture the changes that have been made in each edit version.

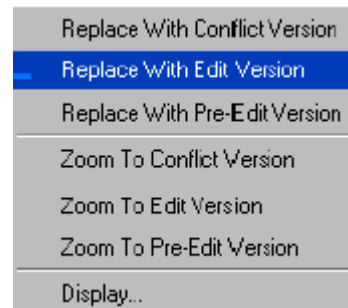
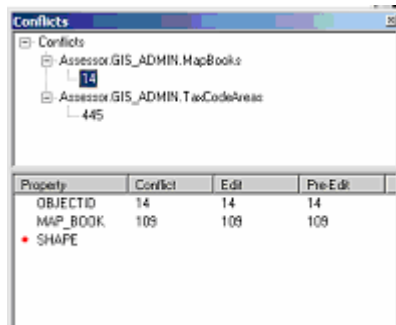
(\\Sczfs04\GIS\TOOLS\ArcGIS\Alignment\versions\Compare_Versions.mxd and
\\Sczfs04\GIS\TOOLS\ArcGIS\Alignment\versions\Condo_Compare_Versions.mxd)

Run comparison between AssessorEdit and Default first, to ensure no inadvertent changes were made to AssessorEdit. You should get a message saying “No Differences Found”. Run the programs and compare each version with the AssessorsEdit version, then save the resulting delta tables to G:\Tools\ArcGIS\Alignment\versions\DeltaTables\yyyymmdd and give them the name of the edit version they pertain to. Email copies to each of the editors. Each editor needs to check that all their edits are correct by comparing their list of parcels worked, against the delta tables. After this check the editors need to make their versions public and they will be ready for reconciling and posting.

RECONCILING

The administrator needs to reconcile each of the Edit Versions with the Parent Version (AssessorsEdit), resolve conflicts between the versions and post the edits to the parent version.

- Open a session of ArcMap and import the AssessorsParcels (although it can be helpful to load all the feature classes that participate in the topologies when you have to determine how to resolve conflicts).
- Hit the Source tab in the TOC and change to the edit version you wish to reconcile.
- Start an edit session.
- Click the Reconcile button on the Versioning tool bar and select AssessorsEdit as the Reconcile/Conflict version.
- If Conflict Dialog Box opens, do conflict resolution by comparing the edit version with the conflict version. Right click on each conflict in the Conflict window, zoom to it by selecting from the “Zoom To” choices and determine which is correct. Choose from the “Replace With” choices as appropriate.



POSTING

When all the conflicts are resolved, the edit version needs to be posted to the parent version (AssessorsEdit).

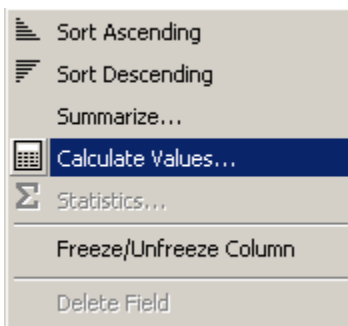
Click the Post button on the Versioning tool bar.



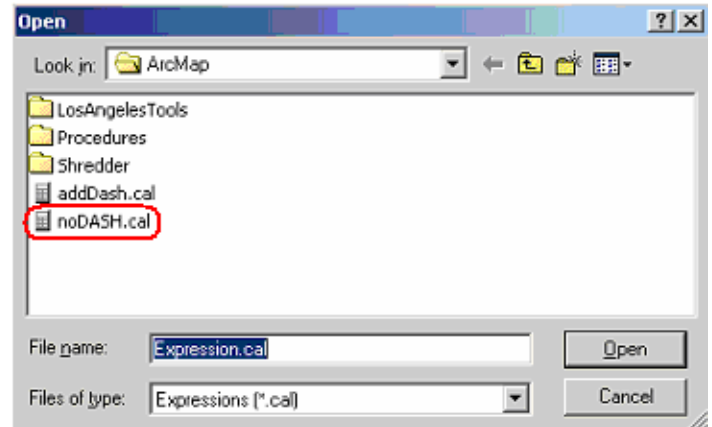
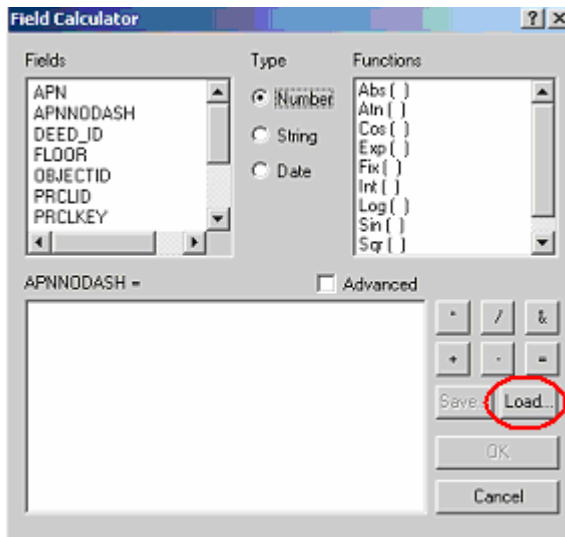
After posting, the two versions are identical and you can continue reconciling the remaining edit versions. Stop editing and change versions before proceeding.

After all the individual edit versions have been reconciled with the AssessorsEdit version and posted, the AssessorsEdit holds all the changes that the editors have made in the last update period. To capture all those changes, version comparison has to be run against the Default version.

- Run version comparison between AssessorsEdit and Default versions after reconciling and posting all the edit versions.
- Save the delta table as AssessorsEdit in the DeltaTables directory (G:\Tools\ArcGIS\Alignment\versions\DeltaTables\yyyymmdd).
- Compare the number of edits in the AssessorsEdit delta table to the combined number of edits from the editors' delta tables.
- Check the AssessorsParcels attribute table for missing APNs and zero area parcels etc. in this version like the edit versions. (See instructions in <\\sczfs05\ASR\Drafting\ArcMap\Procedures\Items to check in your Edit version before you make it Public for posting.doc>)
- The last step before reconciling and posting AssessorsEdit to the Default version is to calculate the APNNODASH field by starting an edit session in the AssessorsEdit version, opening the Attribute table for the AssessorsParcels feature class and right clicking on the APNNODASH field. Select the Calculate Values button



In the Field Calculator window pick the Load button.



Select the noDASH.cal expression (in S:\ArcMap) hit open and then OK in the Field Calculator.

This command will populate the APNNODASH field for all the parcels so this operation will take about 15 +/- minutes.

APNNODASH needs to be calculated for the Condos as well.

When the noDASH calculation is finished, you need to reconcile and post the AssessorsEdit version to the Default. Then stop editing and save the edits.

- Disconnect from your current edit login.
- Log in under the SDE login.
- Bring in the AssessorsParcels feature class. Make sure you have the correct version (AssessorsEdit) by hitting the Source tab.
- Start an edit session.
- Click the Reconcile button on the Versioning tool bar and select Default as the Reconcile/Conflict version. There should not be any conflicts at this point, but this takes about 20 minutes.
- Click the Post button on the Versioning tool bar.
- Stop editing after posting is finished.
- The last step is to log into ArcMap as asr127 and add data. Navigate up to the ASR127 connection to make sure the data isn't added through the SDE connection.

DELETE ALL EDIT VERSIONS

After all the edit versions have been posted, they have to be deleted. Each editor needs to log in and delete his/her own version. Alternately the administrator can log in under their user names and delete the version. Lastly, the AssessorsEdit version needs to be deleted.

(Add Circles)

CHECK SHEET FOR RECONCILE AND POST

Date_____

Version Compare

records in Delta Table

- | | | Condo |
|--|-------|-------|
| <input type="checkbox"/> Version Compare: AssessorsEdit – Default | | |
| <input type="checkbox"/> Version Compare: CherylsEdit – AssessorsEdit | _____ | _____ |
| <input type="checkbox"/> Version Compare: DavidsEdit – AssessorsEdit | _____ | _____ |
| <input type="checkbox"/> Version Compare: GullasEdit – AssessorsEdit | _____ | _____ |
| <input type="checkbox"/> Version Compare: MeagansEdit – AssessorsEdit | _____ | _____ |
| <input type="checkbox"/> Version Compare: ScottsValley – AssessorsEdit | _____ | _____ |

Total # records in Delta Tables

records in final AssessorsEdit Delta Table

Reconciling

Notes

- ☐ CherylsEdit
- ☐ DavidsEdit
- ☐ GullasEdit
- ☐ MeagansEdit
- ☐ ScottsValley

Conflict Management

- | | | |
|---------------------------------------|-----|----|
| <input type="checkbox"/> CherylsEdit | Yes | No |
| <input type="checkbox"/> DavidsEdit | Yes | No |
| <input type="checkbox"/> GullasEdit | Yes | No |
| <input type="checkbox"/> MeagansEdit | Yes | No |
| <input type="checkbox"/> ScottsValley | Yes | No |

Posting

- ☐ CherylsEdit
- ☐ DavidsEdit
- ☐ GullasEdit
- ☐ MeagansEdit
- ☐ ScottsValley

Total number of parcels in the AssessorsParcels layer:

Total number of parcels in the Condo layer:
