

# The Importance of Cadastral Systems

Brent A. Jones, PE, PLS  
ESRI  
Survey/Engineering/Cadastre  
Industry Manager  
[bjones@esri.com](mailto:bjones@esri.com)  
Twitter – BrentJones\_ESRI



# ESRI at 40

## *Our Purpose Is Unchanged – Serving Our Users*

### Status

- Financially Strong & Growing
- Many Strong Relationships

### Goals

- Advancing GIS & Geographic Science
- Promoting Spatial Thinking
- Supporting Our Employees



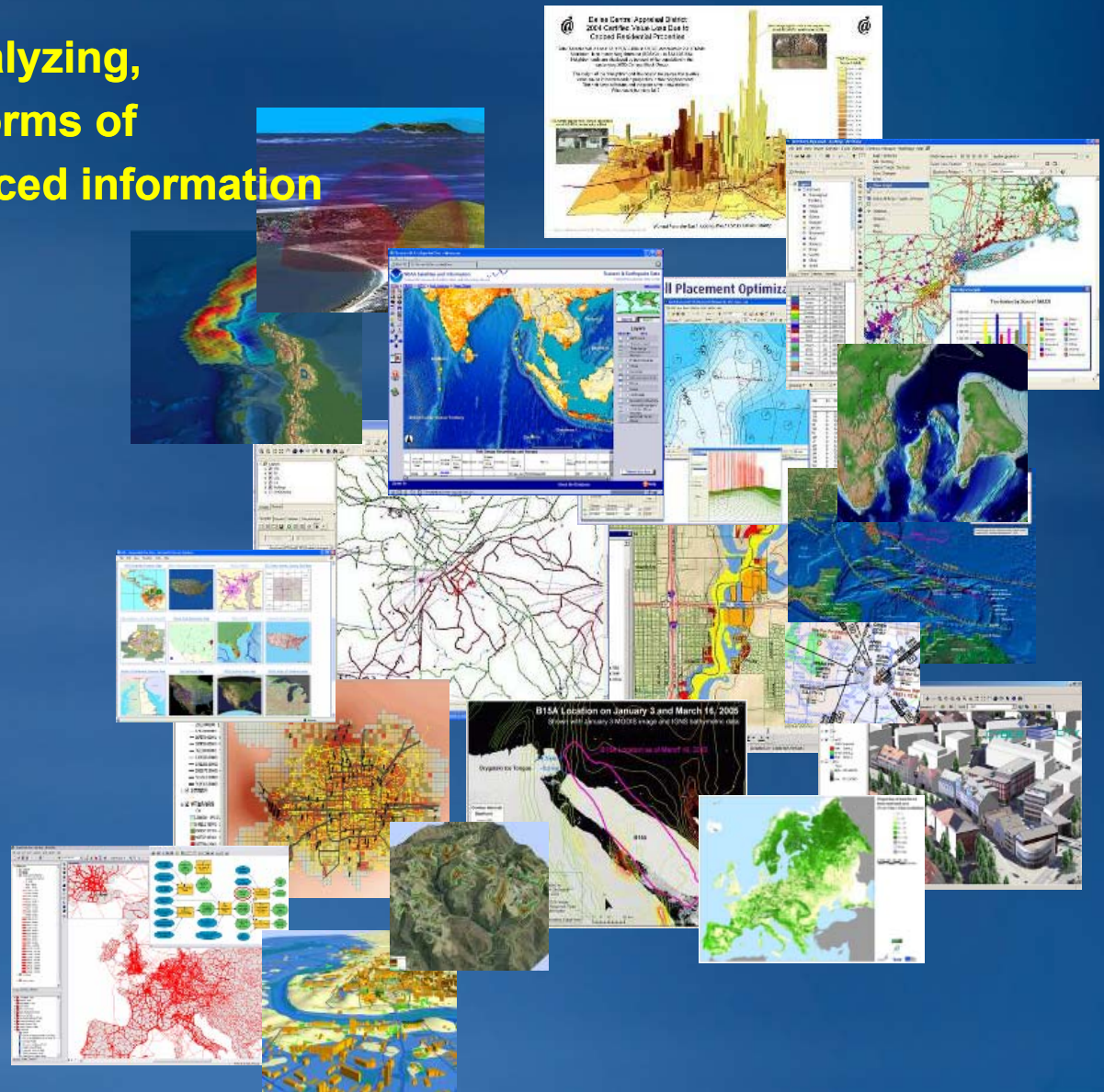
Making a  
Difference

*... And Contributing to Society*



# GIS is a collection of computer hardware, software, and geographic data for . . .

**Capturing, Managing, Analyzing,  
and Disseminating all forms of  
geographically referenced information**

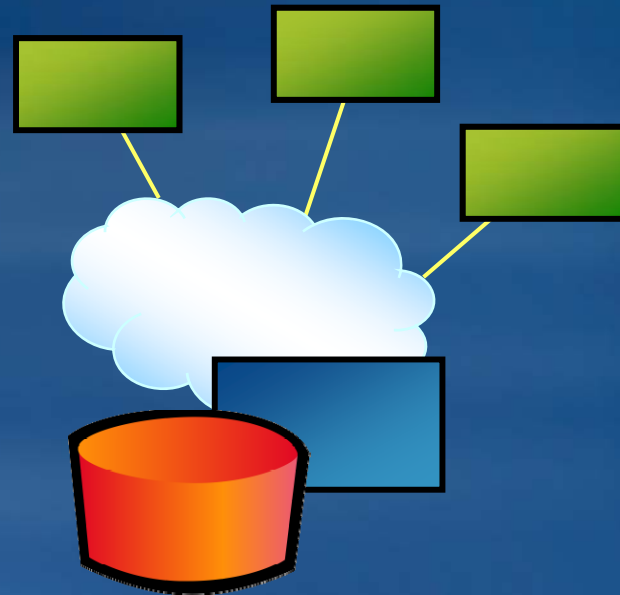


# GIS

*Software Technology for Managing and Applying Geographic Information*

## Supporting:

- Rich Data Model
- Data Management
- Strong Tools
  - Data Compilation
  - Data Integration
  - Analysis / Modeling
  - Mapping / Visualization
- Applications and Workflows



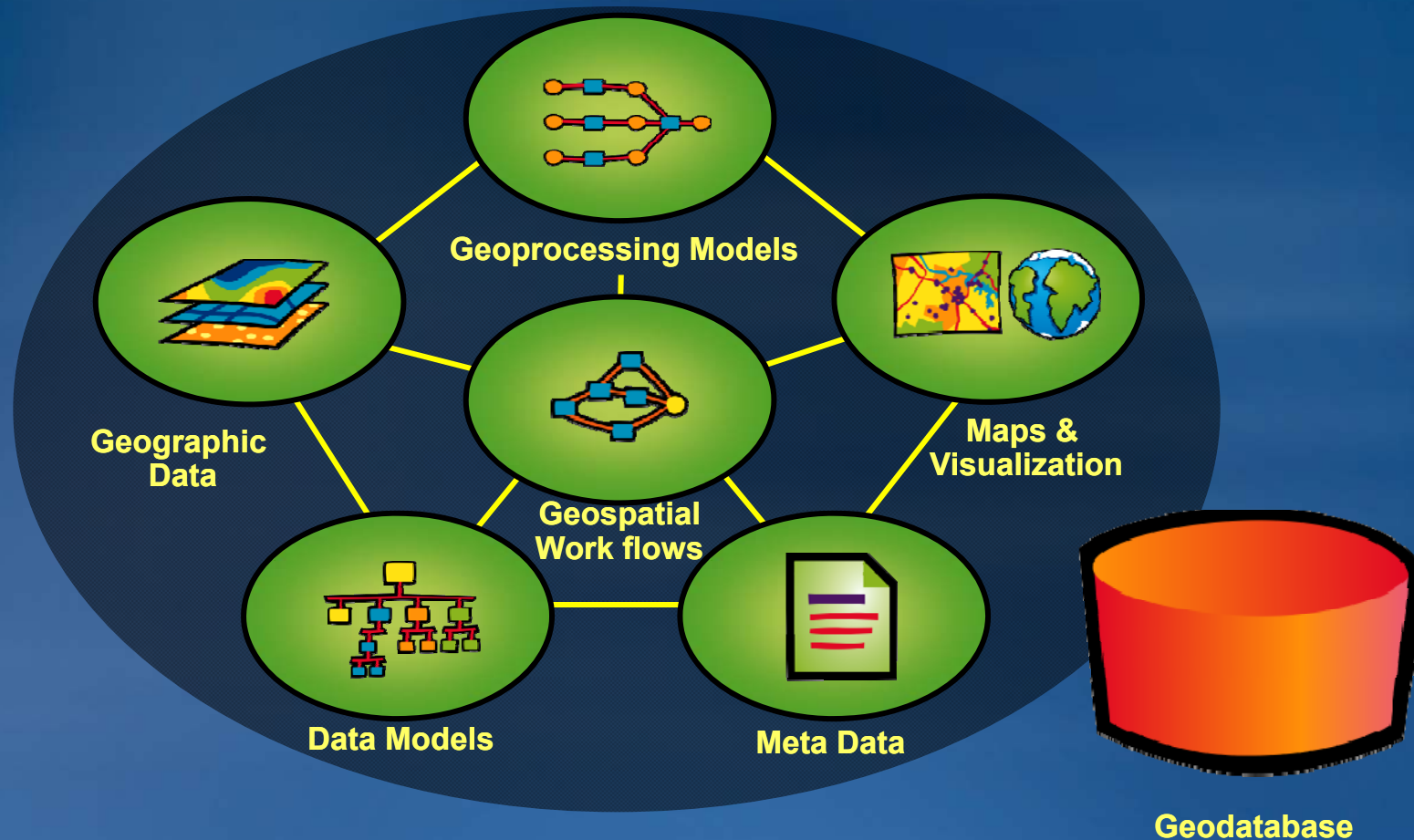
**On a Technology Platform (Architecture, Hardware, Networks . . .)**

**. . . And Knowledgeable Users**



# GIS Organizes and Manages Geographic Knowledge

## *Six Basic Types*



... Useful Building Blocks that Can Be Shared and Applied

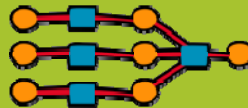
**GIS is -**



**Visualization**



**Data Management**



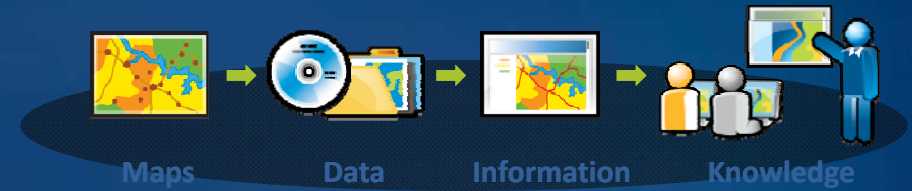
**Spatial Analysis**



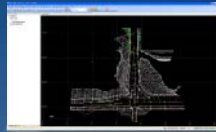
**Mobile**

# Extracting value from geographic data

*Requires modeling, management & georeferencing. . .*



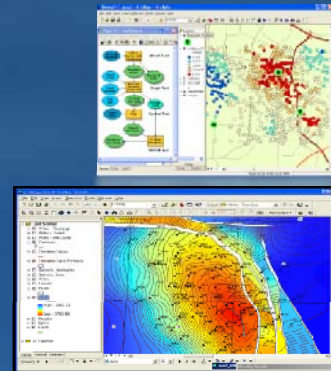
MAPS



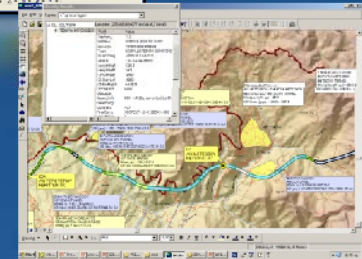
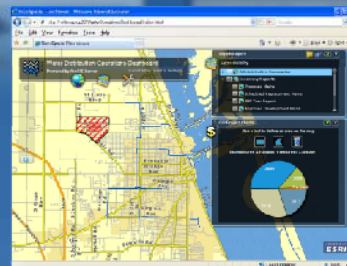
DATA



INFORMATION



KNOWLEDGE

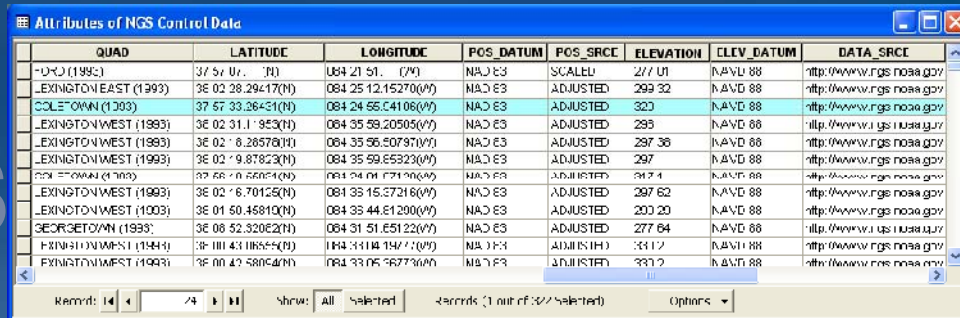




# Components of geographic data

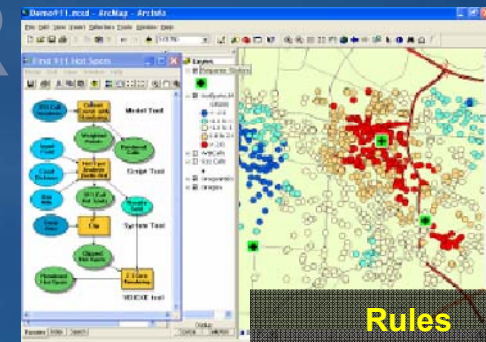
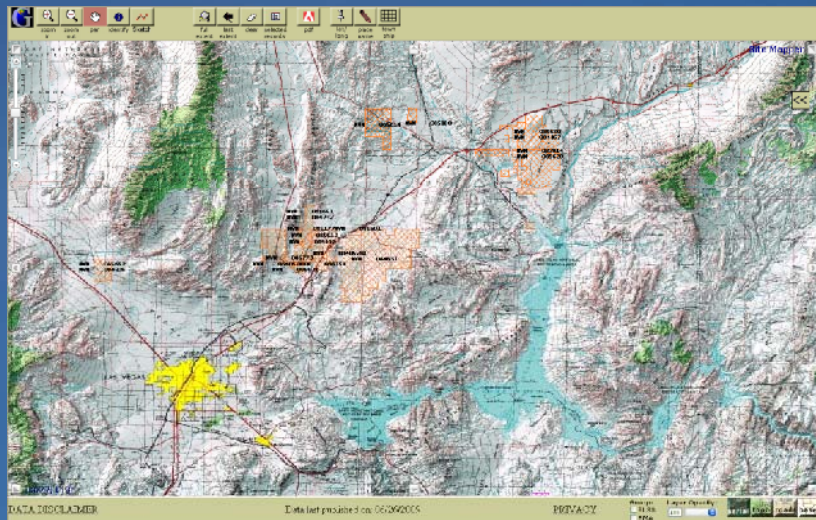
*Properly structuring data powers new uses. . .*

ATTRIBUTES



QUAD	LATITUDE	LONGITUDE	PCS_DATUM	PCS_SRCE	ELEVATION	ELEV_DATUM	DATA_SRCE
0400 (1993)	37 57 07.1 (N)	084 21 51.1 (W)	NAD 83	SCALED	277.01	NAD 83	http://www.ngs.noaa.gov
LEXINGTON EAST (1993)	38 02 28.29417 (N)	084 25 12.15270 (W)	NAD 83	ADJUSTED	299.32	NAD 83	http://www.ngs.noaa.gov
COLEMAN (1993)	37 57 33.26431 (N)	084 24 55.54106 (W)	NAD 83	ADJUSTED	320	NAD 83	http://www.ngs.noaa.gov
LEXINGTON WEST (1993)	38 02 31.11953 (N)	084 35 59.20505 (W)	NAD 83	ADJUSTED	295	NAD 83	http://www.ngs.noaa.gov
LEXINGTON WEST (1993)	38 02 6.28578 (N)	084 35 56.50797 (W)	NAD 83	ADJUSTED	297.38	NAD 83	http://www.ngs.noaa.gov
LEXINGTON WEST (1993)	38 02 9.87823 (N)	084 35 59.65323 (W)	NAD 83	ADJUSTED	297	NAD 83	http://www.ngs.noaa.gov
COLEMAN (1993)	37 56 6.55854 (N)	084 24 04.79106 (W)	NAD 83	ADJUSTED	297.4	NAD 83	http://www.ngs.noaa.gov
LEXINGTON WEST (1993)	38 02 6.70125 (N)	084 35 15.37216 (W)	NAD 83	ADJUSTED	297.62	NAD 83	http://www.ngs.noaa.gov
LEXINGTON WEST (1993)	38 01 50.45810 (N)	084 38 44.81200 (W)	NAD 83	ADJUSTED	200.20	NAD 83	http://www.ngs.noaa.gov
GEORGETOWN (1993)	38 08 52.32062 (N)	084 31 51.65122 (W)	NAD 83	ADJUSTED	277.64	NAD 83	http://www.ngs.noaa.gov
LEXINGTON WEST (1993)	38 01 43.18555 (N)	084 31 14.14710 (W)	NAD 83	ADJUSTED	297.7	NAD 83	http://www.ngs.noaa.gov
LEXINGTON WEST (1993)	38 01 43.58054 (N)	084 33 05.56773 (W)	NAD 83	ADJUSTED	297.7	NAD 83	http://www.ngs.noaa.gov

BEHAVIOR



**Rules**

Local streets and highways may not intersect

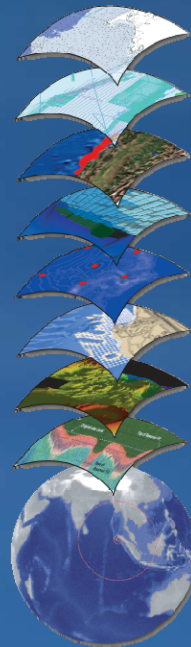
GEOMETRY

# GIS Provides the Platform

## *Modeling the Land Information Environment*

### Providing

- An Integrative (Geospatial) Framework
- Analytic Methods
- Advanced Visualization



*The Thematic Layers*



*... Providing Many Tools and Methods  
... And Comprehensive Information Management*



## ***All elements of land administration benefit from GIS***

**Cadastral  
Land Registration  
Mapping  
Valuation  
Planning  
Land management  
Land Information Systems  
Spatial Data Infrastructures**



## ...GIS is the Technology Platform

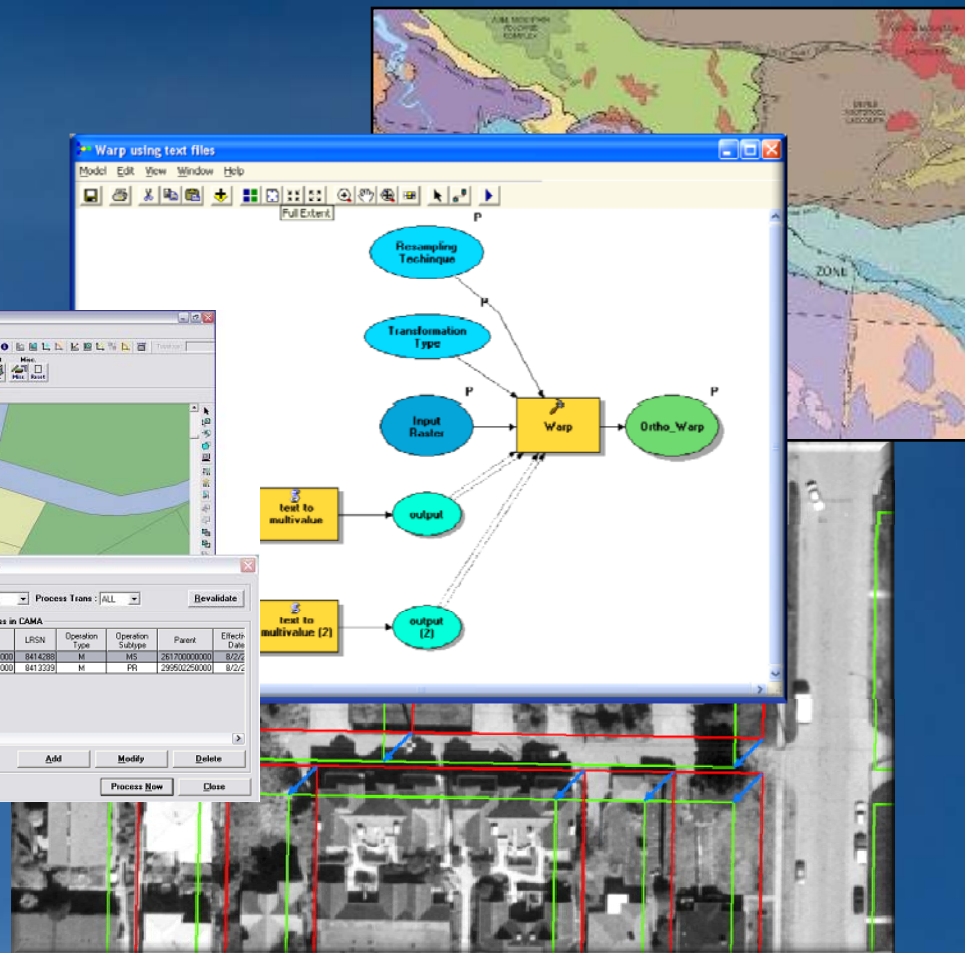
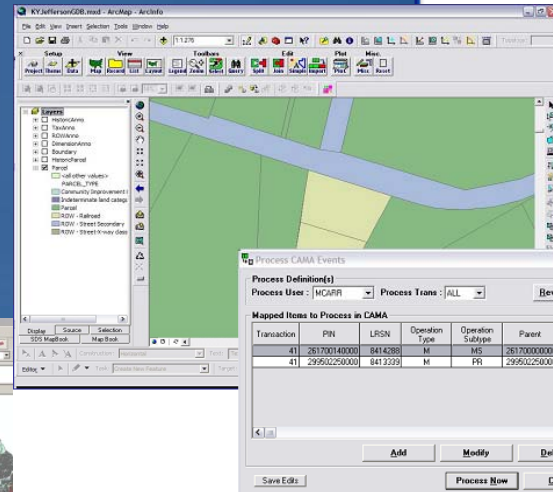
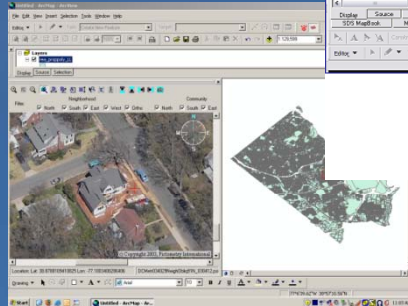


# GIS Provides Centralized Data Management

*Leveraging the value of data throughout the Enterprise. . .*

## Benefits

- Standardized Workflows
- Standardized Data Structures
- Eliminated Data Duplication
- Leverages More Applications
- Lowers Cost

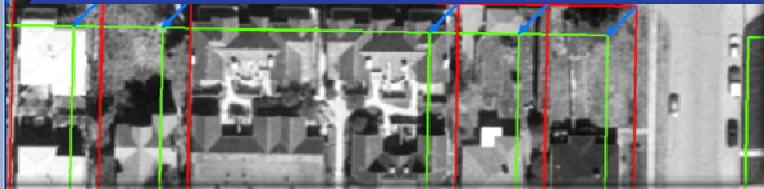
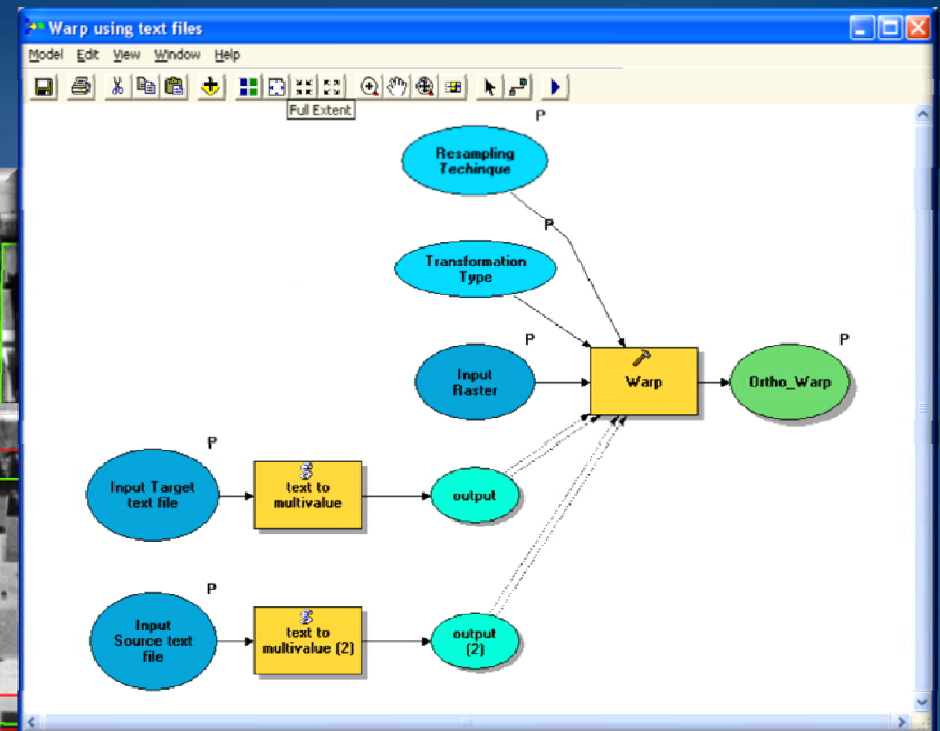
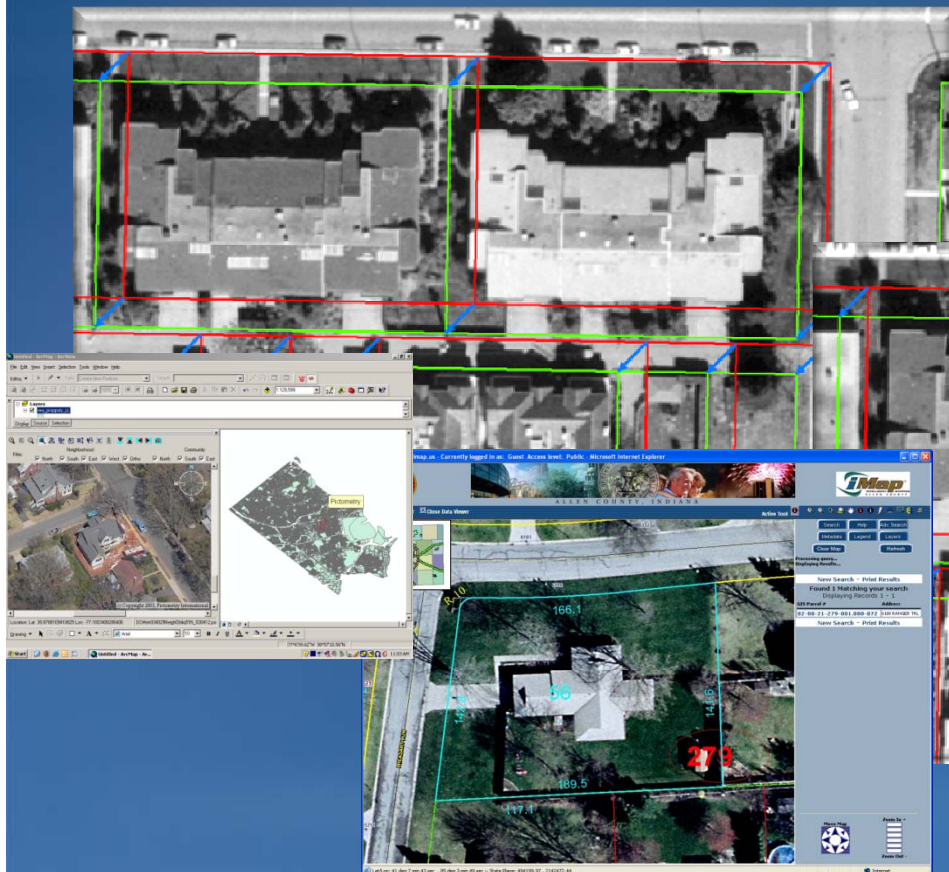


# Integrating Imagery

*Leveraging the Imagery throughout the Enterprise. . .*

## High Resolution Imagery

- Change Detection
- Data Adjustment
  - Raster to Vector
  - Vector to Raster



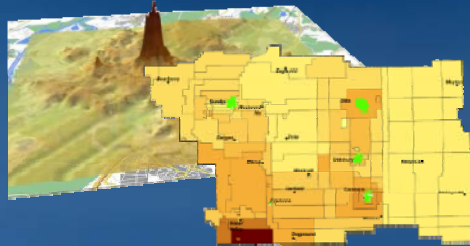
# Land Information Systems

## *Integrating and Managing Land Information*

Tax Mapping

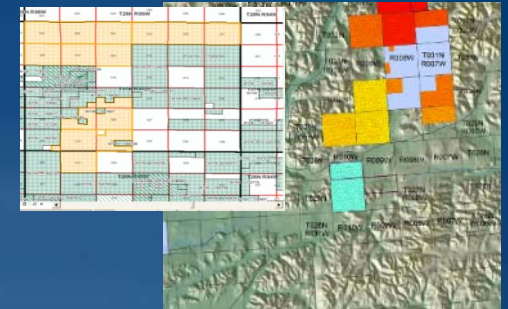


Property Valuation  
*Germany*



*Canada*

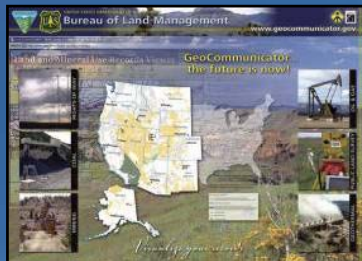
Integrated Land Management  
*BLM*



Adapx Pen-Based Sketching  
*USAID-Timor Leste*



Analyzing Transactions



Oil & Gas Leases



National Data Portal



# Planning

*GIS provides advanced analysis and visualization . . .*

**Urban Planning**  
*California*



**Urban Design**  
*San Jose, California*

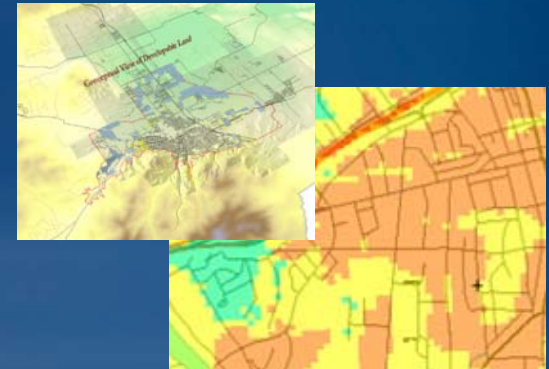


**Urban Redevelopment**  
*Bakersfield, California*

**Virtual City**  
*Bangkok*



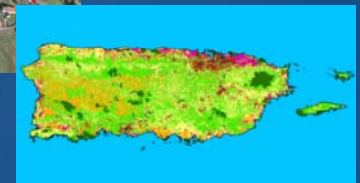
**Land Use Suitability**  
*Montana*



**Web Based Suitability**  
*North Carolina*



**Online Community Planning**  
*U.K.*



**Regional Planning**  
*Puerto Rico*

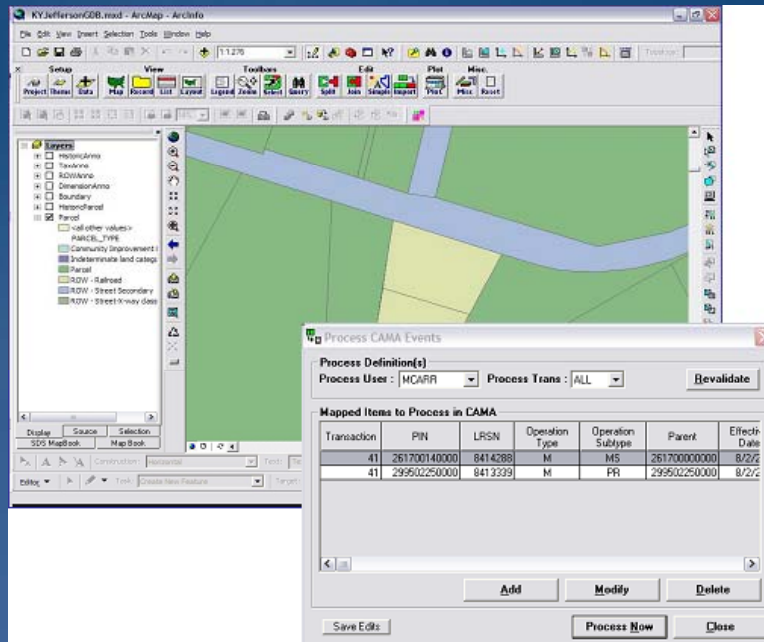
**3D Zoning**  
*Portland, Oregon*



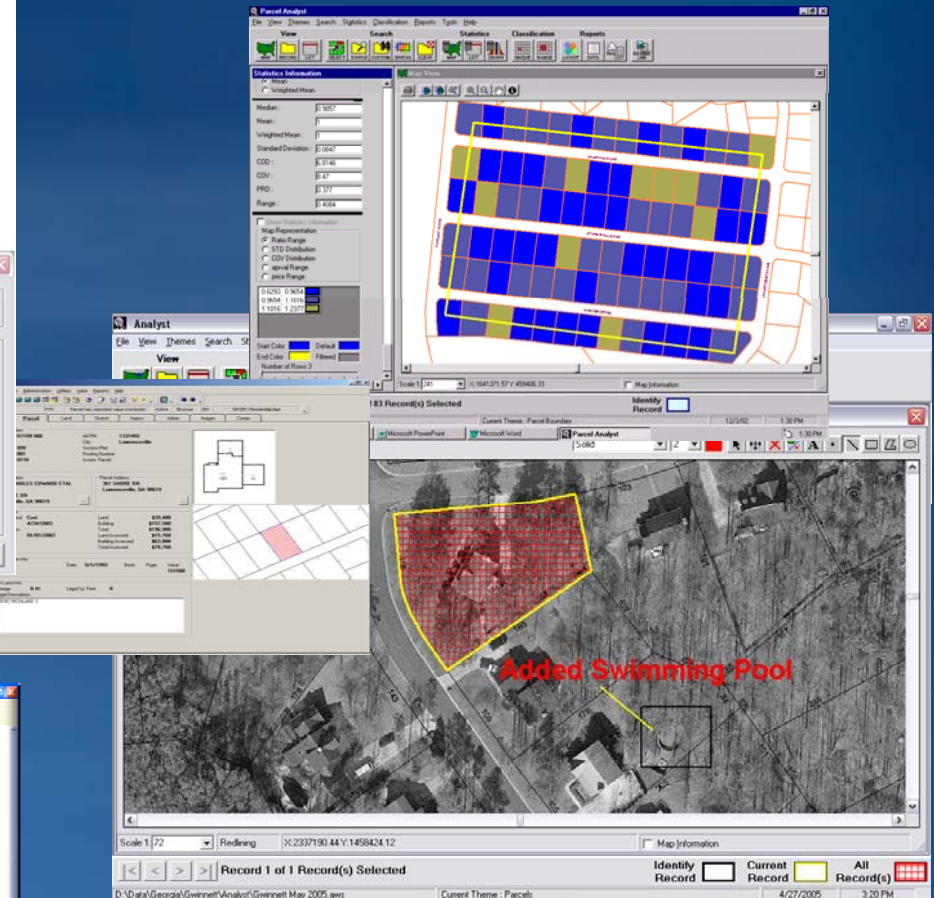
*Arizona*

# Integrating GIS and Valuation Systems

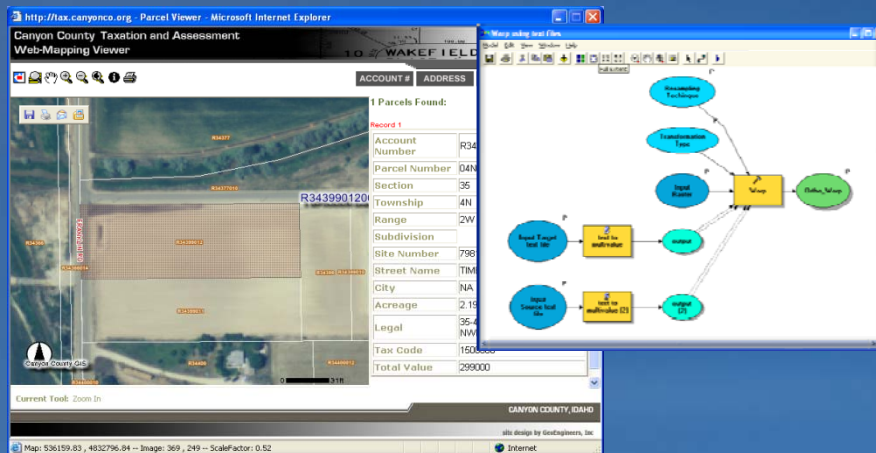
*Modeling trends, improving revenue projections*



Louisville/Jefferson County



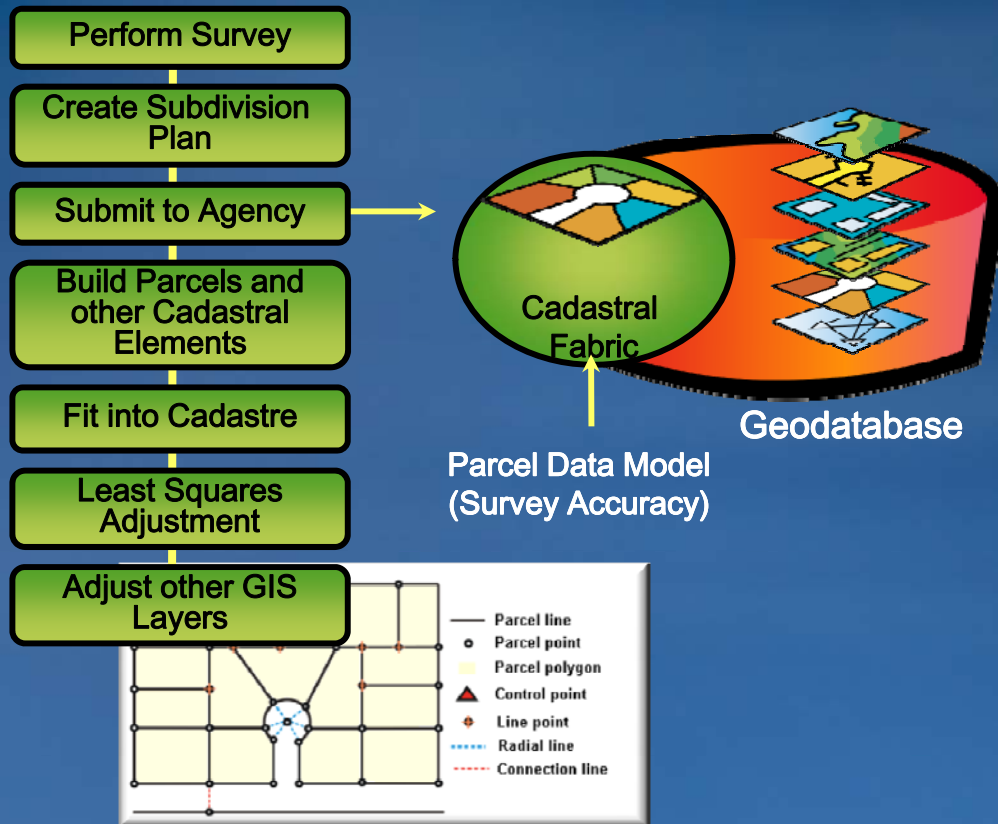
Snohomish County



# Specialized Cadastral Workflow

*Parcel manager provides new data structures for survey data. . .*

## Workflow



## Benefits

- Incremental updates in accuracy
- Integration of Surveyors work
- Standardized procedures

*. . . Supporting Complex Workflows*



# Ownership Parcel/Property Information

*Not Single Use/Single Source Anymore*

**Note: This is a workshop. . .**  
**Your participation is required!**



# Enterprise-wide GIS

What's this all about?



# en·ter·prise -

Pronunciation: \ˈen-tə(r)-ˈprīz\

Function: *noun*

Etymology: Middle English, from Anglo-French, from *entreprendre* to undertake, from *entre-* inter- + *prendre* to take — Date: 15th century

**1 : a project or undertaking that is especially difficult, complicated, or risky**

**2 : readiness to engage in daring or difficult action : <showed initiative great enterprise in dealing with the crisis>**

**3 a : a unit of economic organization or activity; especially : a business organization  
b : a systematic purposeful activity <agriculture is the main economic enterprise among these people>**



**Wikipedia –**

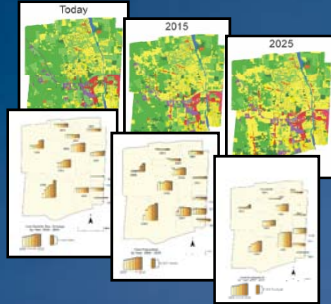
**An enterprise GIS is a geographic information system that is -**

- **Integrated through an entire organization**
  - **Manage**
  - **Share**
  - **Use spatial data and related information**
- **Address a variety of needs**
  - **Data creation**
  - **Modification**
  - **Visualization**
  - **Analysis**
  - **Dissemination**

# Traditional Role of GIS in Government

*Single silo applications. . .*

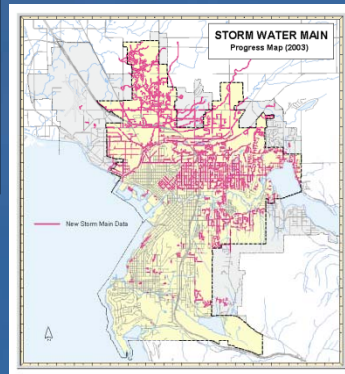
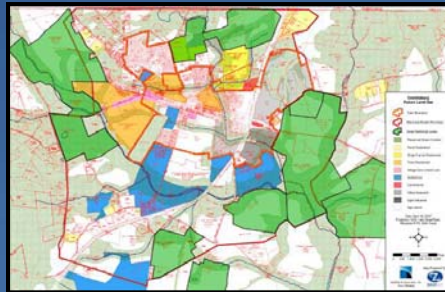
## Scenario Planning



## Urban Design

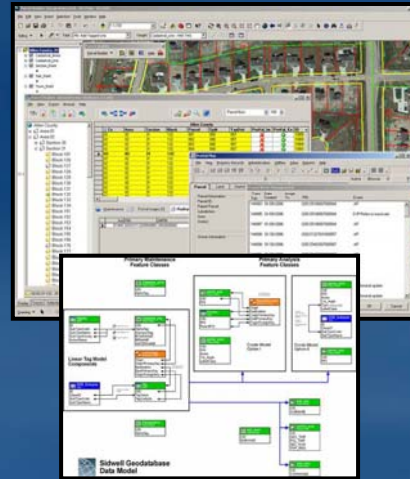


## Land Use Planning

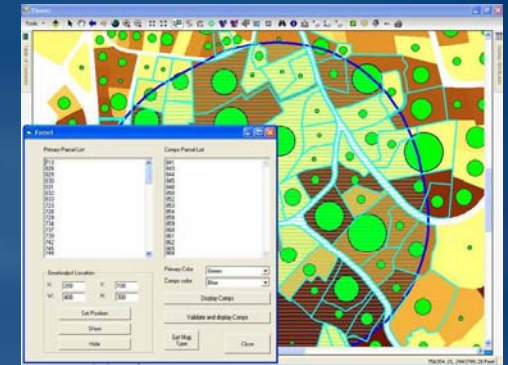


## Sustaining Infrastructure Public Works/Engineering

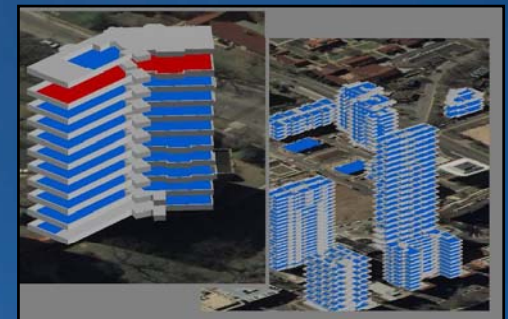
## Integrated Assessment



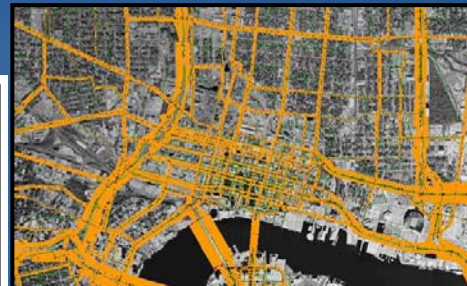
## Property Valuation



## Stratified Tax Appraisal

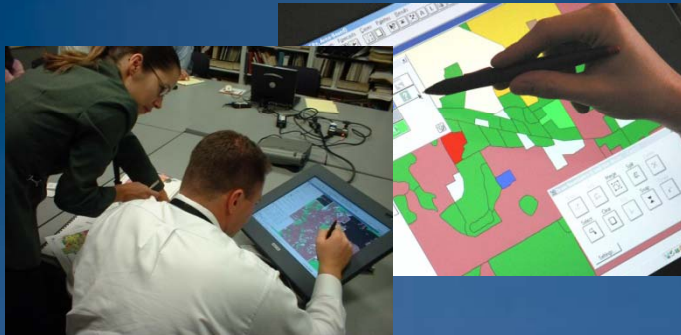


## Transportation Modeling



# Traditional Role of GIS in Government

*Single silo applications. . .*



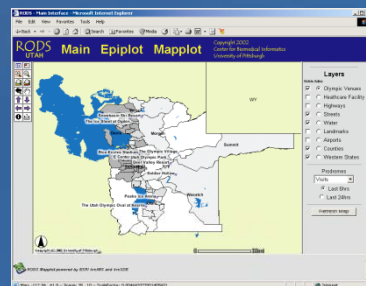
**Public Works**



**Public Safety**



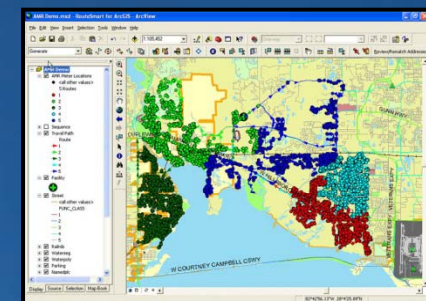
**Crime Mapping**



**Health Surveillance**



**Emergency Management**

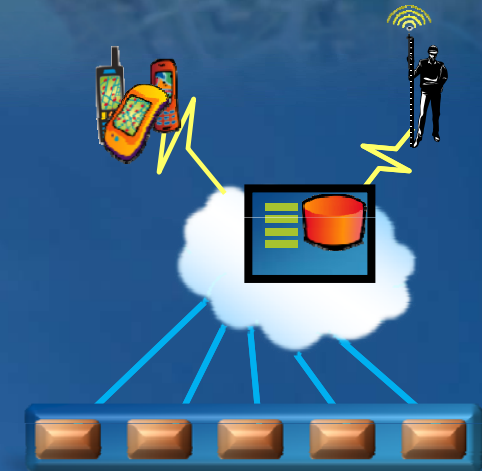
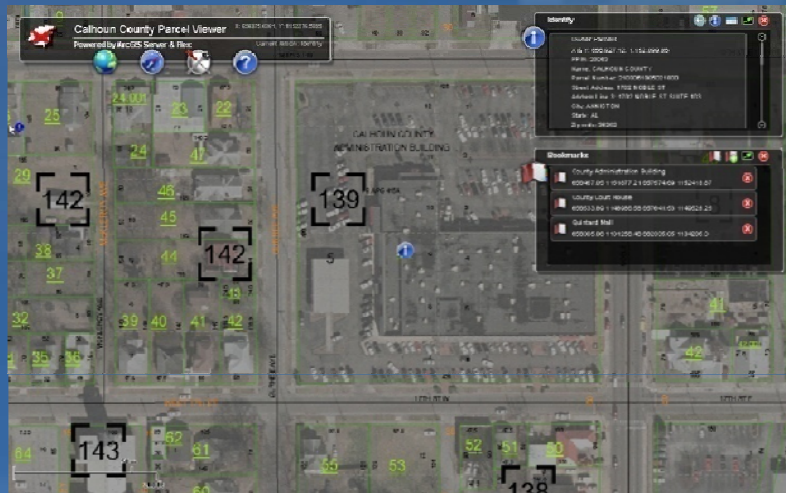
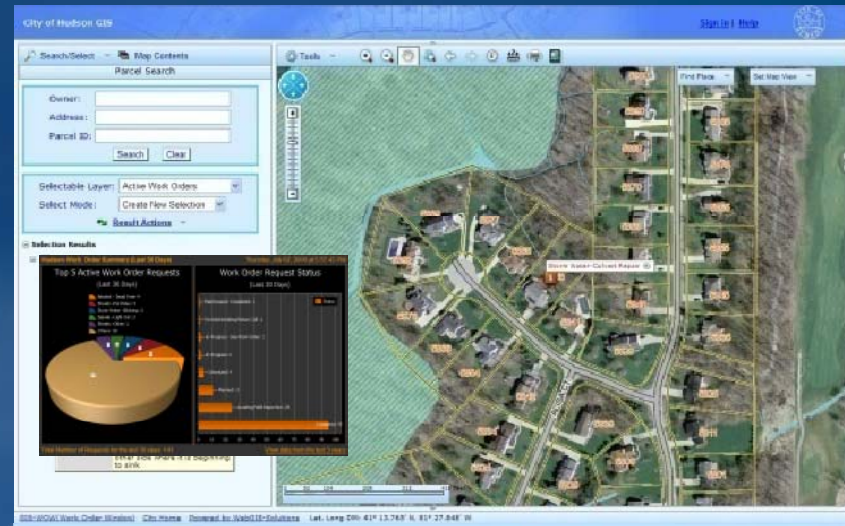


**Meter Reading Optimization**



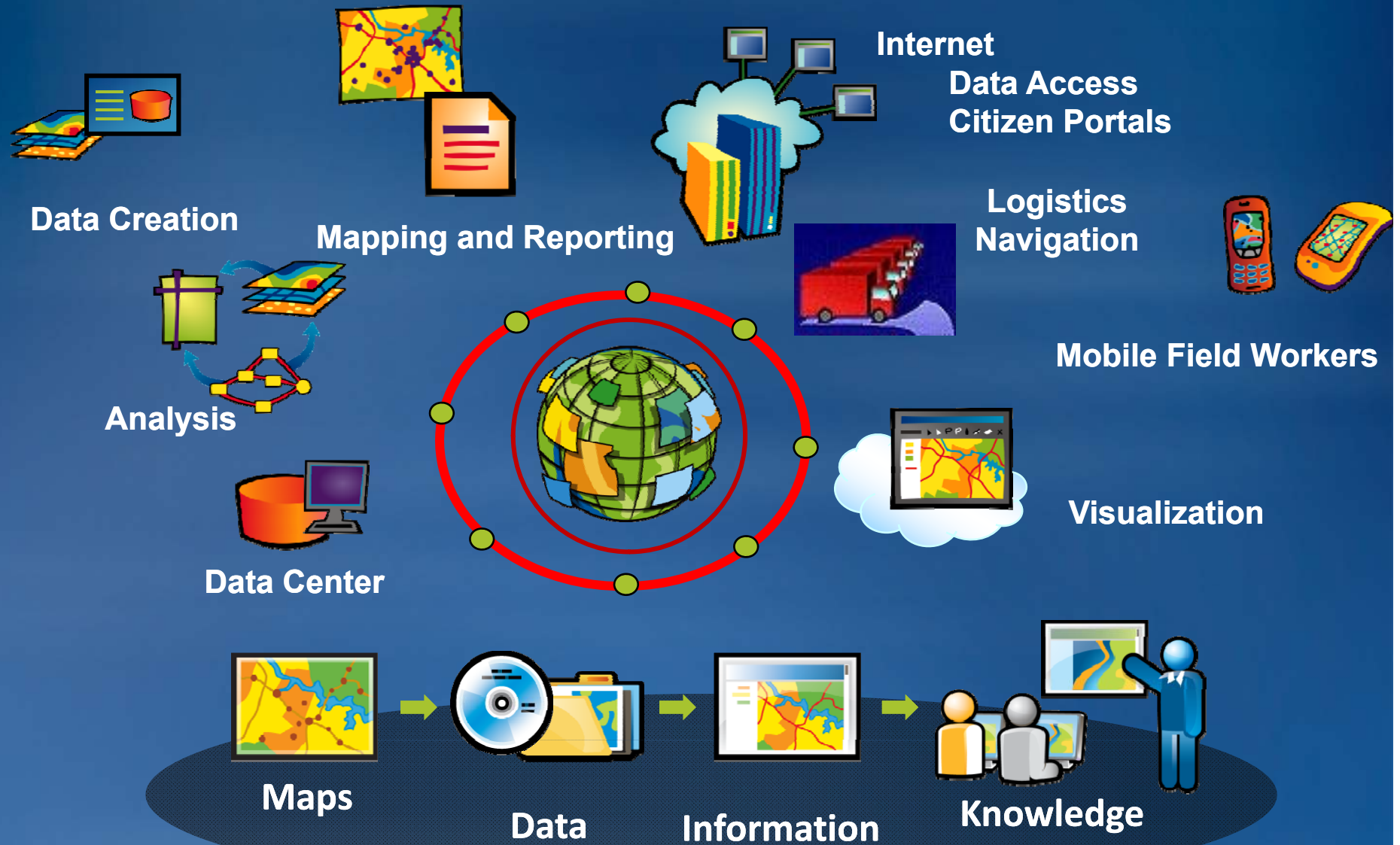
# New Roles for GIS in eGovernment

- Transparency
- Citizen Participation
- Web Portals
- Dashboards
- Census
- Demographics
- Mobile
- . . .



# Government Enterprise GIS

*GIS is at the center of eGovernment implementations. . .*



# Enterprise GIS

*Standards-based Interoperability – SOA*

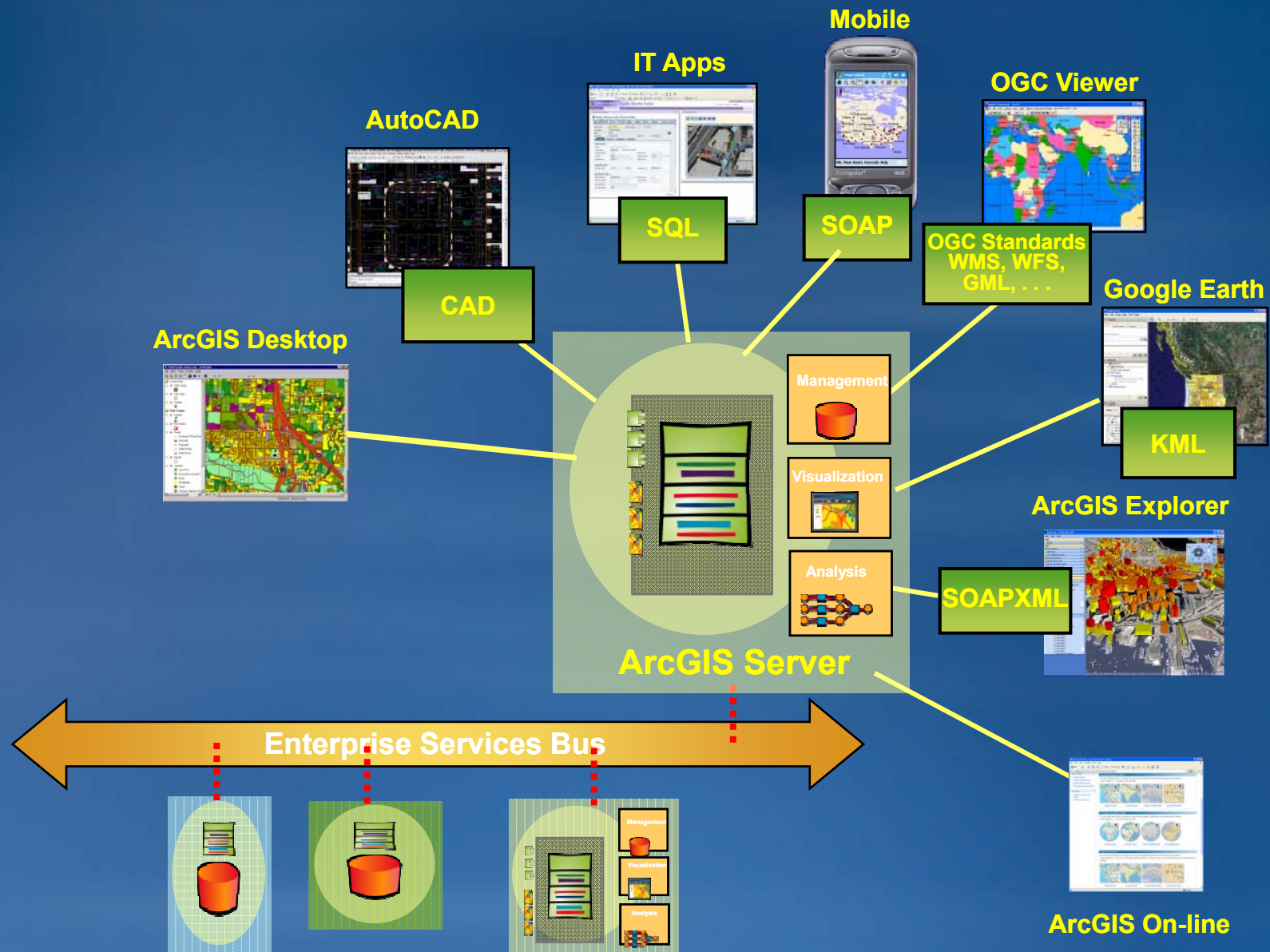
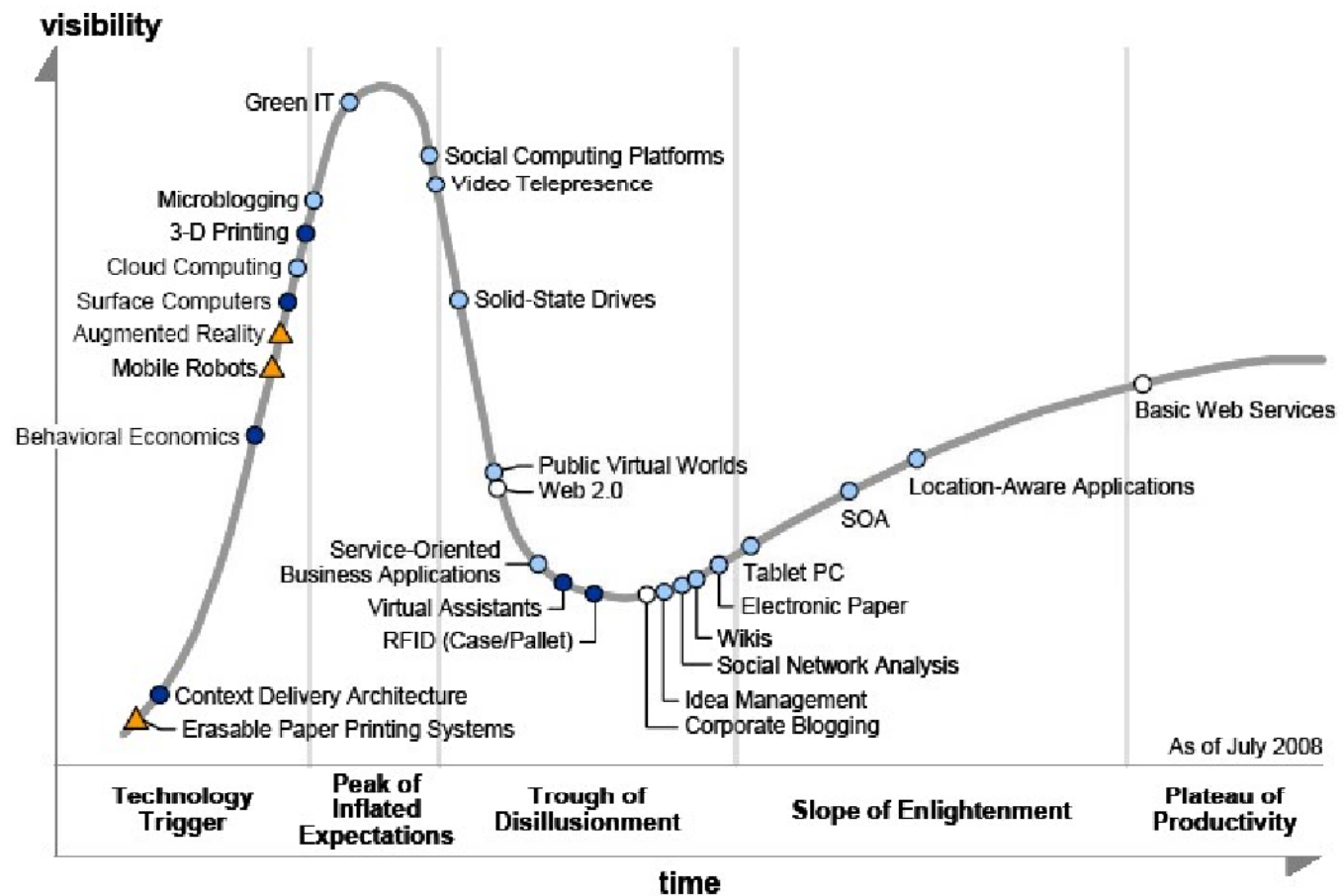




Figure 1. Hype Cycle for Emerging Technologies, 2008



**Years to mainstream adoption:**

○ less than 2 years

● 2 to 5 years

● 5 to 10 years

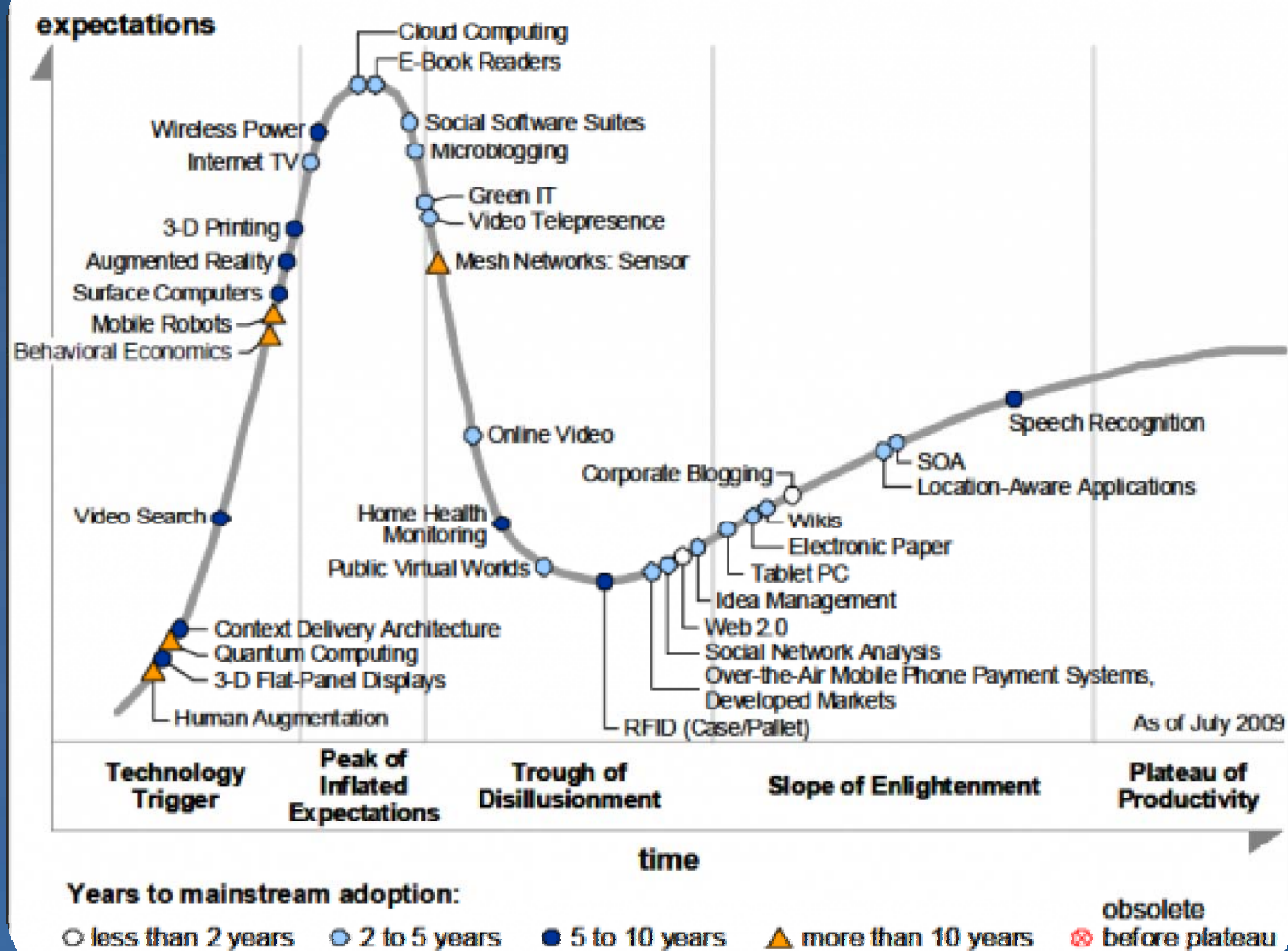
▲ more than 10 years

⊗ obsolete

⊗ before plateau

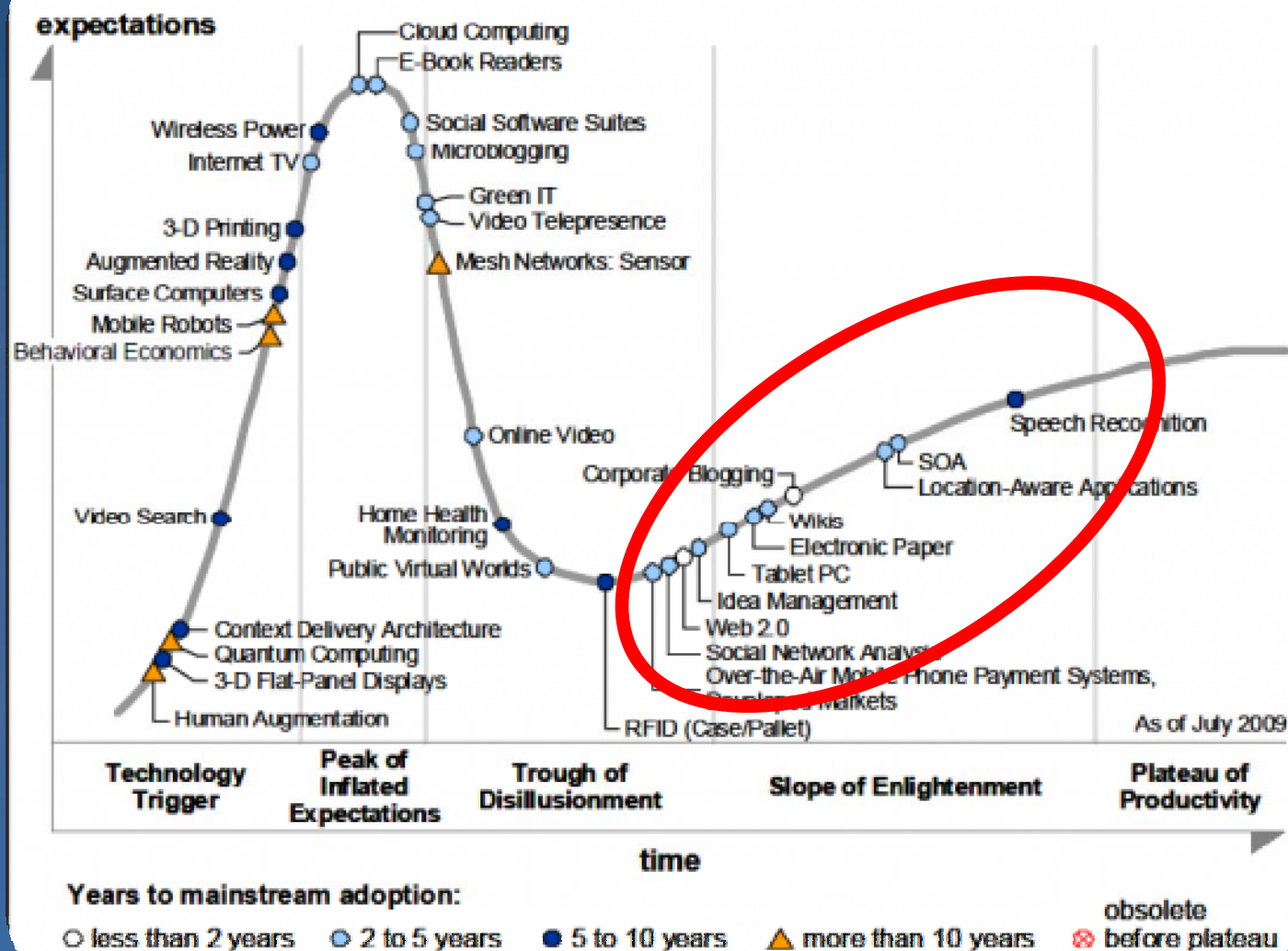
Source: Gartner (July 2008)

Figure 1. Hype Cycle for Emerging Technologies, 2009



Source: Gartner (July 2009)

Figure 1. Hype Cycle for Emerging Technologies, 2009



Source: Gartner (July 2009)



# Parcels – why the big deal?

*Secure property is the foundation to a successful economy. . .*

Capital

Collateral

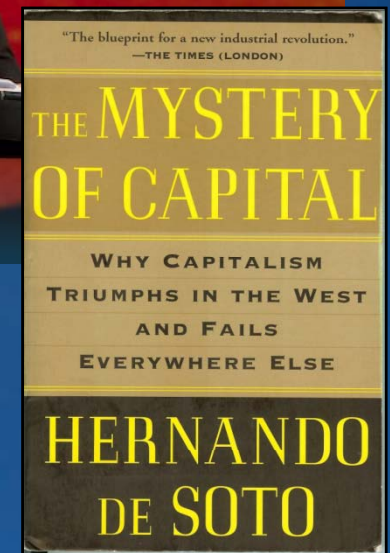
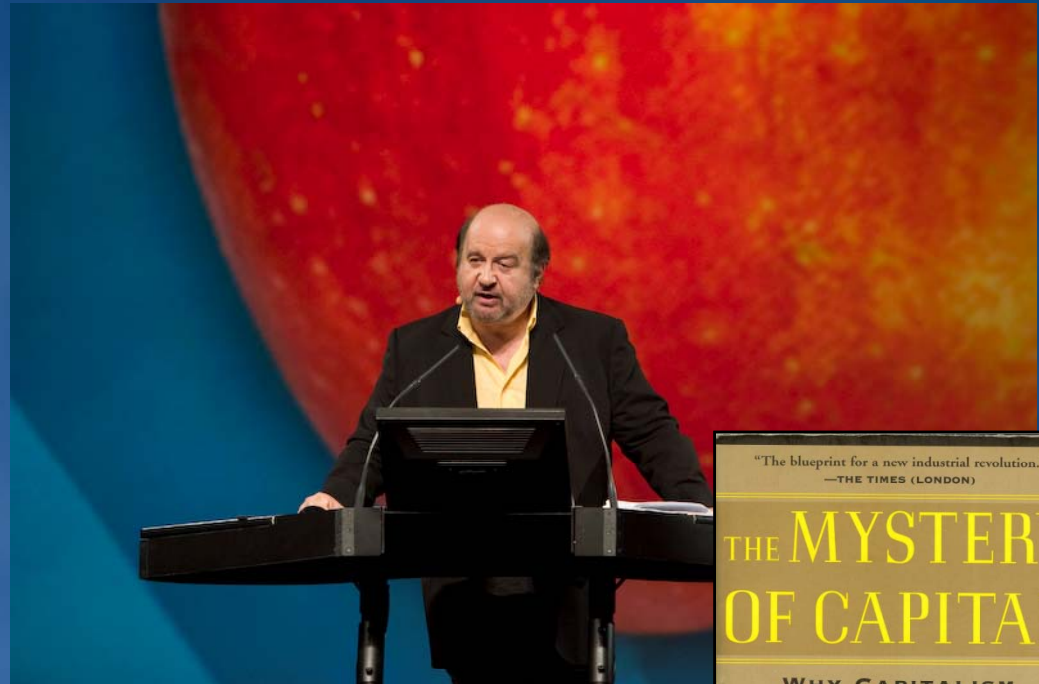
Stability

Taxation

Heir

Assign

Wealth accumulation



<http://www.esri.com/events/uc/agenda/plenary.html>

# Parcels -

- **A parcel is an unambiguously defined unit of land within which a bundle of rights and interests are legally recognized in a community.**
- **A parcel encloses a contiguous area of land for which location and boundaries are known, described, and maintained, and for which there is a history of defined, legally recognized interests.**

**National Land Parcel Data: A Vision for the Future  
2007, NRC Mapping Sciences Committee**

# Parcels –

*Provides intelligence to maps and imagery*

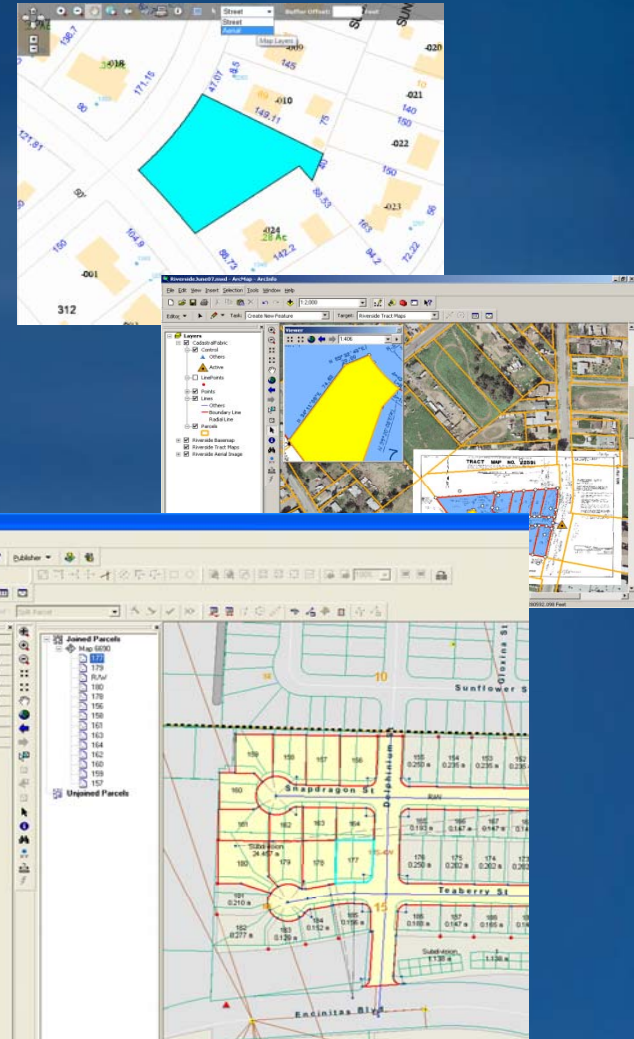
- Users view and use parcels differently
- Land owners
  - Know little of GIS
- Surveyors
  - Individual parcel accuracy
- Enterprise Professional Users



# Parcels –

*A representation of the limits of rights. . .*

- Property lines
- PID
- Description (Legal Record)
- Bearings/Distances
- Monuments
- Zoning
- Area
- Ownership
- Interests
- Address
- Tax parameters
- . . . . .



# Parcels – who needs ‘em? (your local gov’t)

*And what are they doing with them?*

- County Engineer
- Emergency Responders
- Law Enforcement
- Logistics
- Census
- Demographer
- DOT
- Welfare Services
- Register of Deeds
- Health Officer
- Code Enforcement
- Treasurer
- Sheriff
- Assessors
- County Surveyors
- Auditor
- Public Works
- Parks & Recreation
- Permits
- Epidemiologist
- Planner
- Environmental Analyst
- Zoning Administrator
- Real Property Lister
- E 911 Coordinator
- . . . .

# Parcels – who needs ‘em? (your community)

## **Part 2**

- Realtors
- Home buyers
- Insurance companies
- Utilities
- Pipelines
- Railways
- Engineers
- Developers
- Broadband providers
- Environmental groups
- Historians
- Call before you dig
- Reverse 911
- Land surveyors
- Waste management
- Elected officials
- Facility managers
- Carbon traders
- . . . . .



# Parcels – who needs ‘em? (the Feds)

## **Part 3**

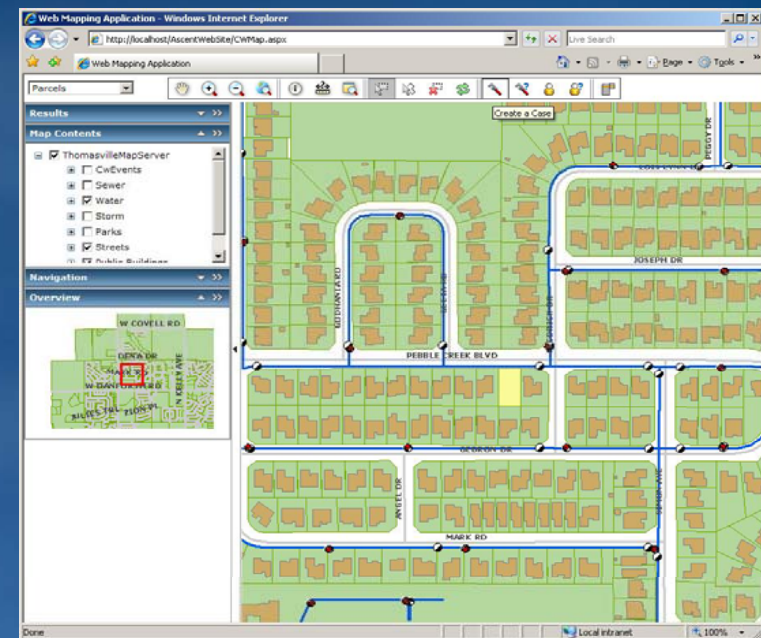
- **Federal Government**

- Federal Maps
- Statistics
- Census
- Agriculture/Land Use
- Foreign ownership of real estate
- Federal lands
- Assistance programs – standardize records (housing, community development, historic preservation, HUD)
- DHS – i.e. Katrina, wildfires
- EPA
- NOAA
- . . .

# Parcels – who needs ‘em?(put state name here)

## Part 4

- **State Government**
  - Equitable assessment
  - Department of Revenue
  - DOTs
  - State owned lands
  - Statistics
  - Census
  - Agriculture/Land Use
  - Foreign ownership of real estate
  - Federal lands
  - Emergency response
  - Environmental protection
  - . . .



# Parcels – why don't we want to share 'em

*They're mine. . .*

- Cost
- Liability
- “Once you get these, what will you want next?”
- “How much work do I need to do to share?”
- “What's in it for me?”
- Hard to manage expectations
- Data models
- Currency
- Quality
- Barter Value
- . . .

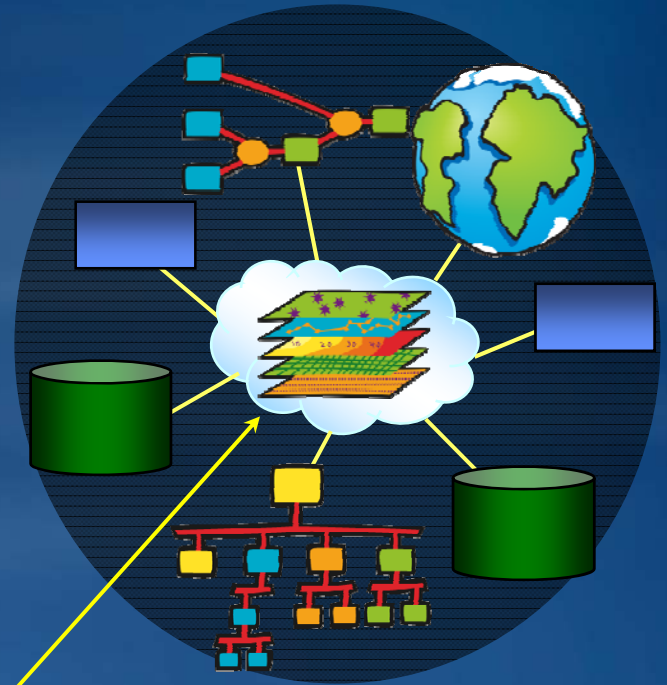
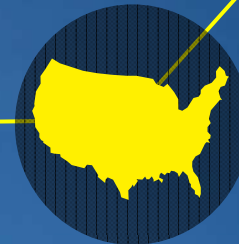
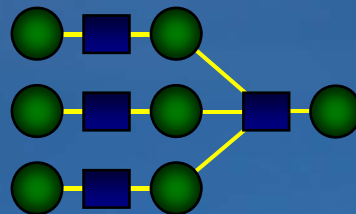




# Federated Parcels

State Agencies  
County/Local Government  
Federal Agencies  
GSA  
BIA  
Tribal Governments

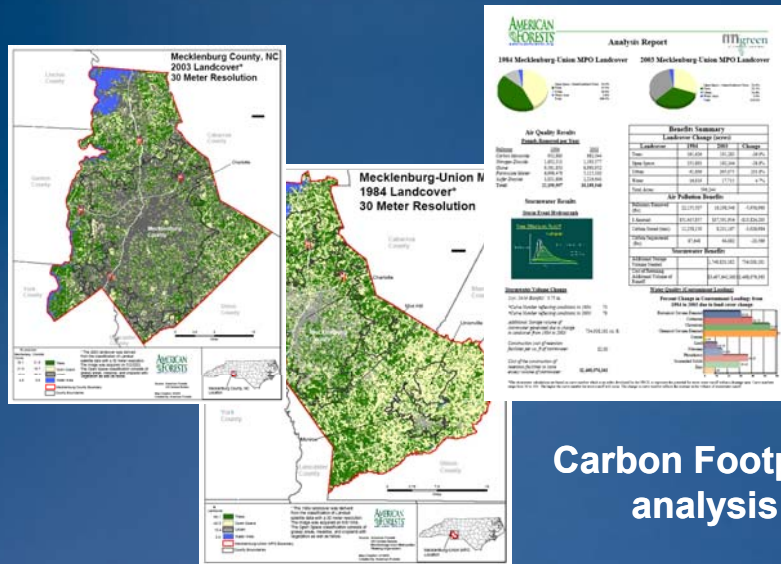
State Coordinators



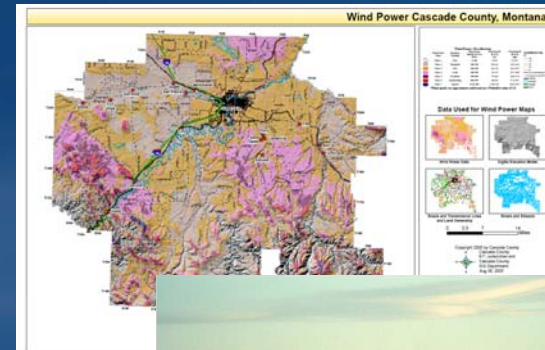
Federal Coordinator

Indian Lands Coordinator

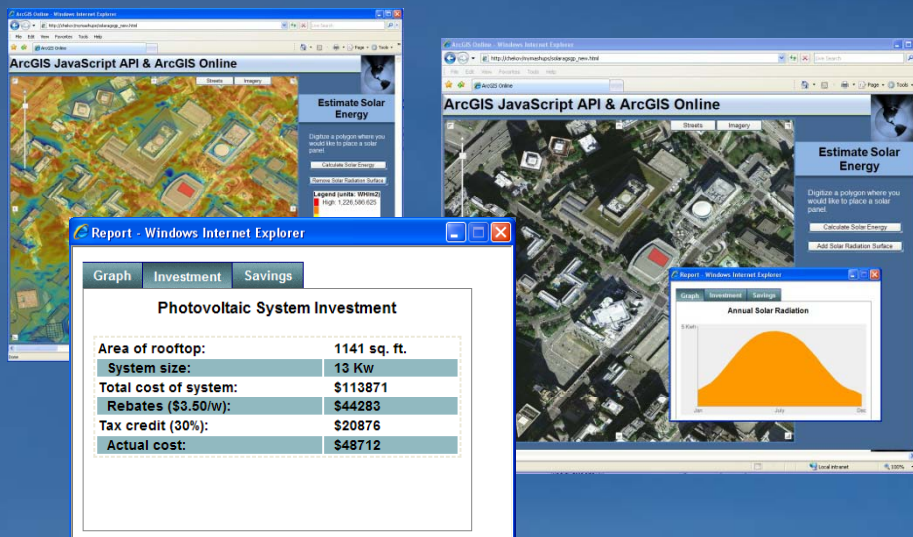
# Parcels for Green Government



## Carbon Footprint analysis



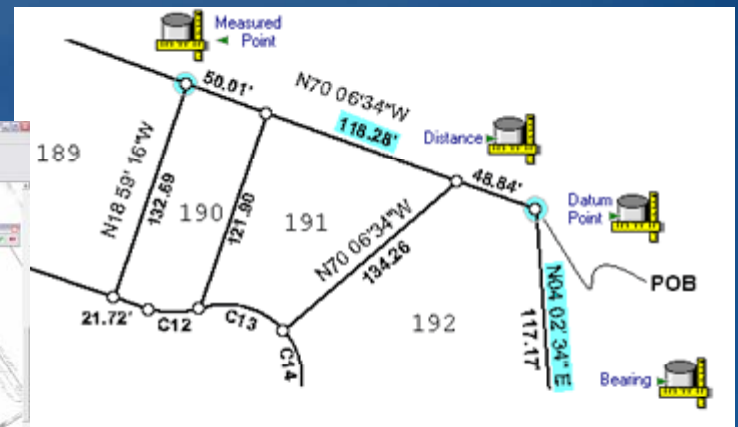
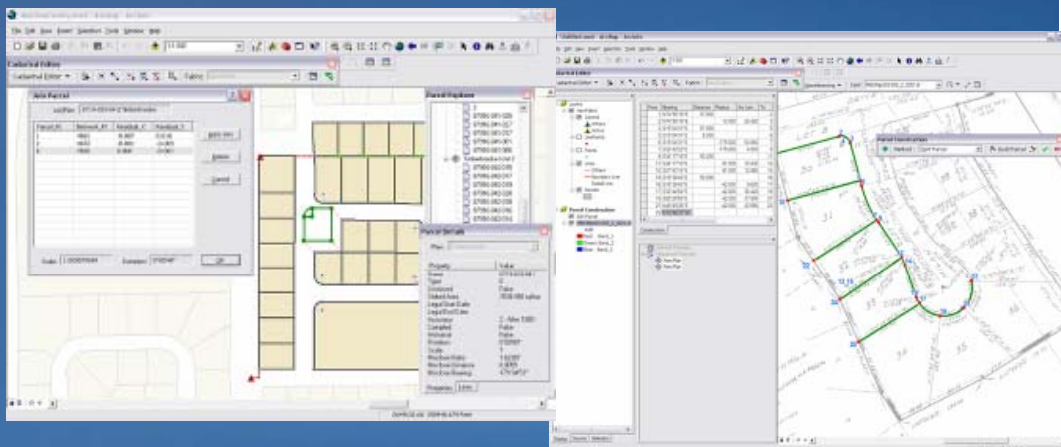
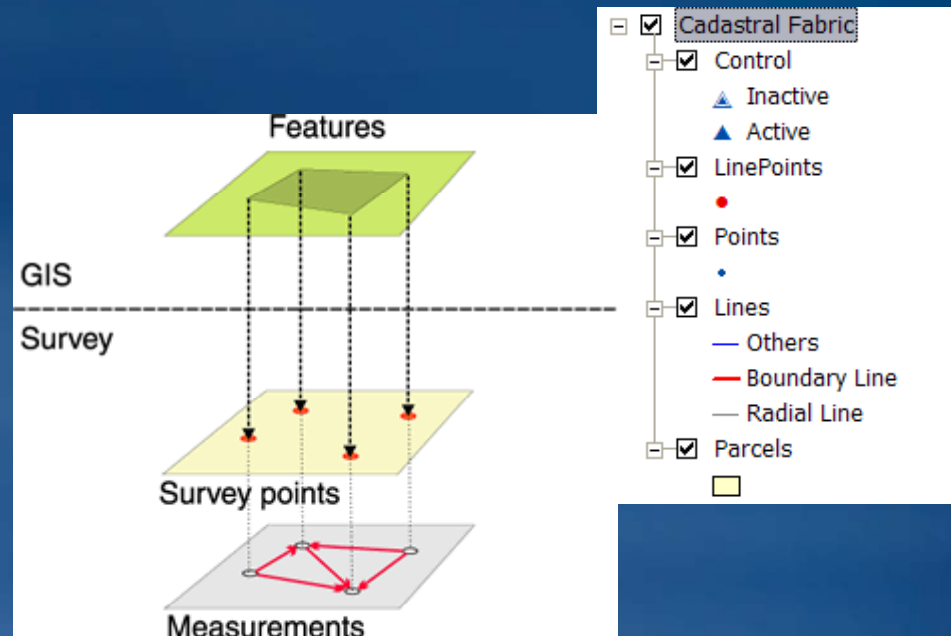
## Alternative Energy



# Parcels – for Accuracy Control

*A new way to manage spatial accuracy of GIS data*

- Parcels are the fundamental land element
- Parcels are created by measurements
- Measurements can be maintained (improved) over time
- GIS data based on parcels can be spatially maintained





# The Importance of Cadastre

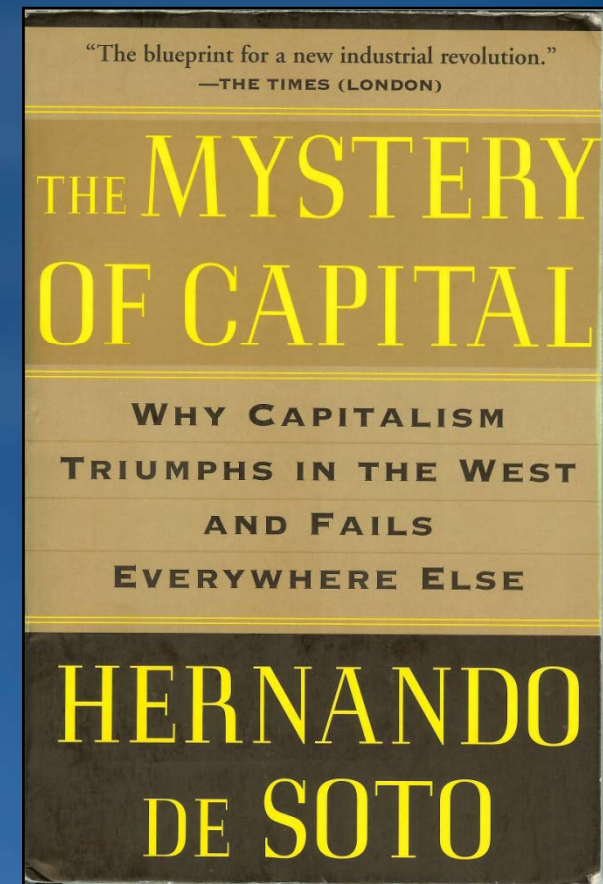
*Capital to drive economies*

Formalizing Land Ownership/Occupation is the first step in  
“unlocking” the capital in land

Collateral  
Stability

Accumulation of Wealth

Pass Property onto Heirs



# The Importance of Cadastre

*Modernization of Financial Sectors. . . .*

Create Land Markets

Transactions Tracked

Markets Mature –

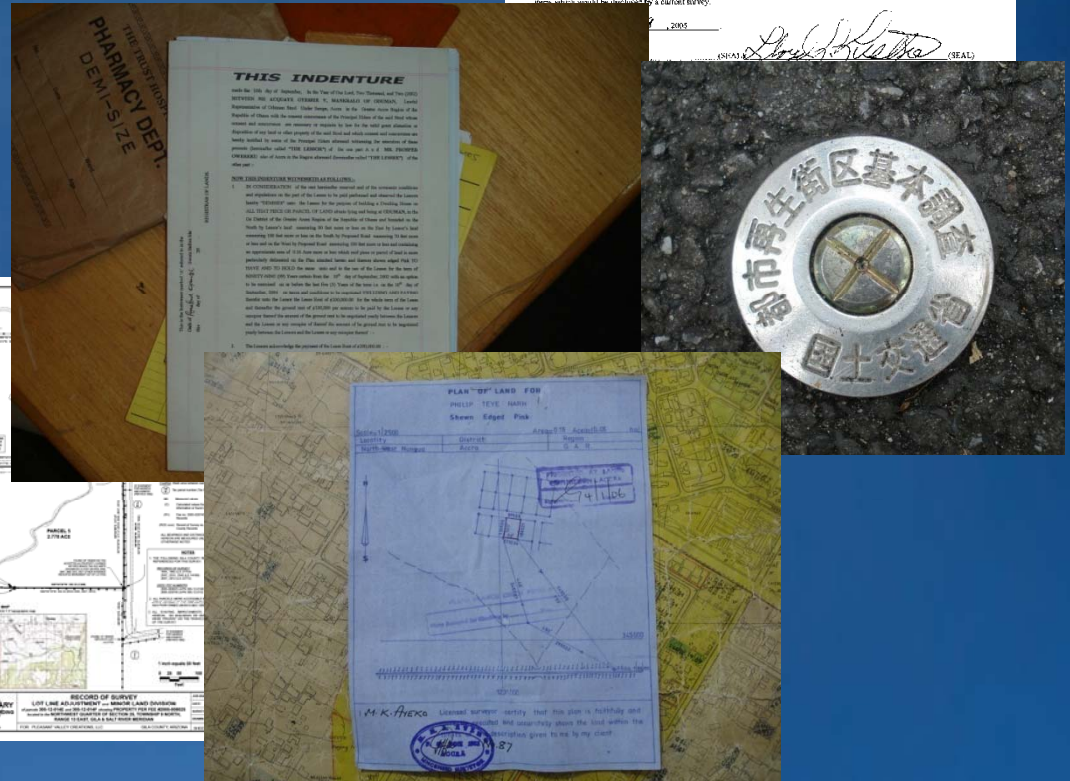
Confidence in Land Administration

Creative Financial Instruments

Securitization of Commercial Interest in Land Mobilizes Funding



**Organized, managed, accessible land records. . .**

[illegible]

# Using GIS to Integrate Registry and Cadastral Systems

*...The Union of All Elements which constitute Ownership. . .*

## Parties

- Owners
- Tenants
- Mortgagors
- Trustees
- Attorneys
- others



## Property

- Physical Description
- Cadastral Survey
- Parcels
- Buildings
- Improvements
- Apartments



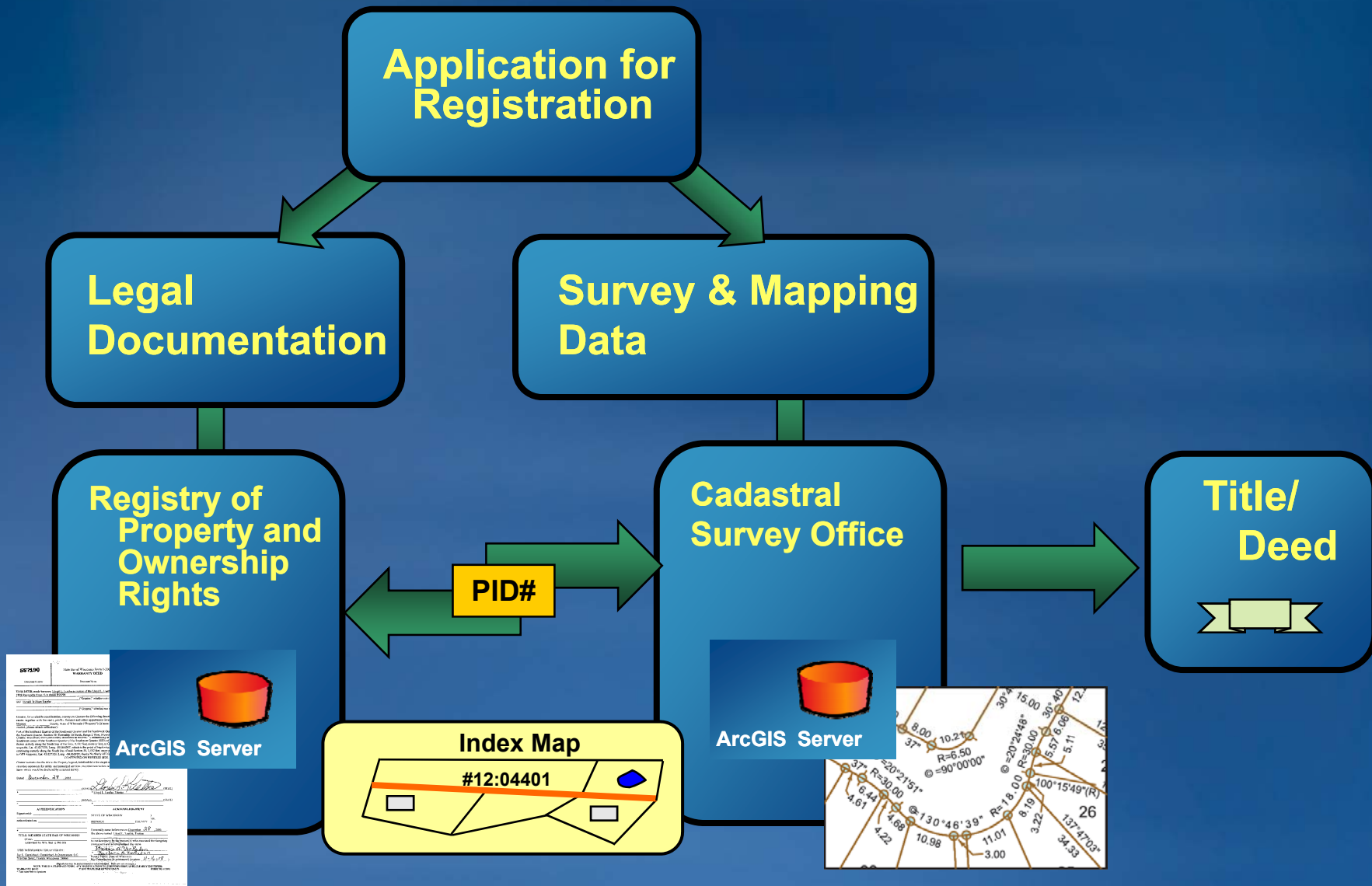
## Rights

- Ownership
- Leasehold
- Servitude
- Restriction
- Encumbrance
- Sale
- Heir
- others



# Cadastral Mapping/Surveying

*Ensures rights and restrictions are identified and transparent*

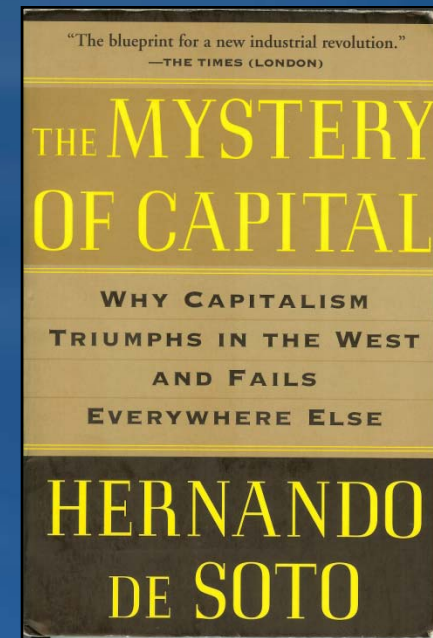


# Ghana Land Titling and Registration

## *Case Study of Ongoing GIS-Based Land Registration Project*

*“The exciting and unique part of your approach is that you are truly building the shoes to fit the poor”*

- Dr. Hernando de Soto

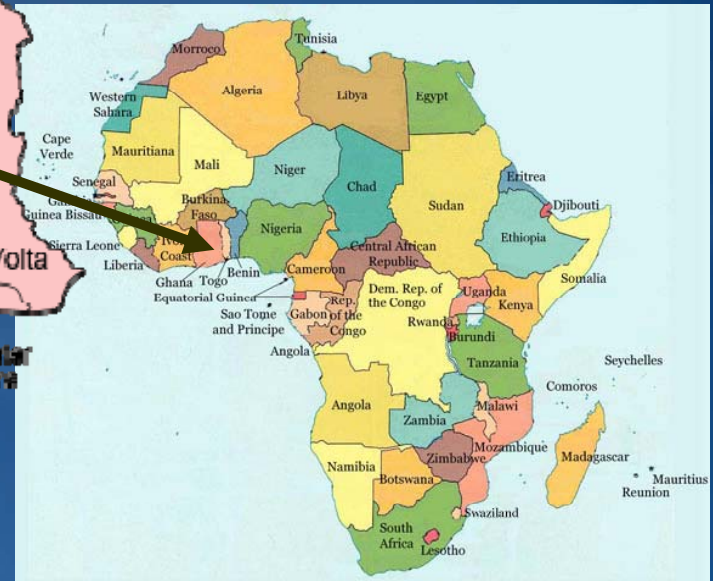


*. . . Practical implementation of land economic theory*

# Ghana

*Independent west African nation since 1960*

- Population – 23 Million
- 93 people/km<sup>2</sup>
- GDP \$690 per capita
- Presidential republic
- Capital – Accra
  - Population 2 Million
- Ashiaman, Tema – Project
  - Population 250,000



Ashiaman, Tema

# Conditions in Ghana

## *Informal settlements*





# Conditions in Ghana

## *Informal settlements*



# Conditions in Ghana

## *Entrepreneurial culture*





# Conditions in Ghana

## *Entrepreneurial culture*



# Conditions in Ghana

*Active, optimistic society*





# Existing Land Registration Situation

*Costly, complex, under utilized land registration system*

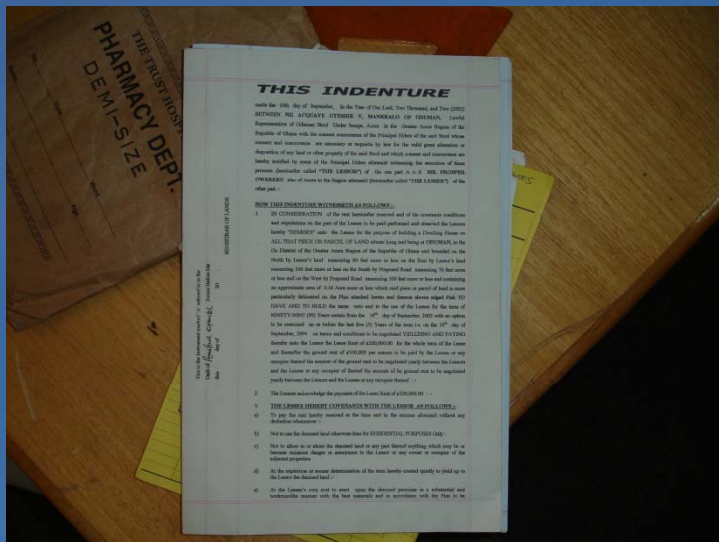
- Application – 6 Months, fees too high
  - Travel and time to Accra and associated costs, multiple trips
- Consult Land Registrar for Title Processing
  - 3 days
  - 1% stamp duty (implies valuation, separate agency)



# Existing Situation (con't)

*A “top-down” process for those with means*

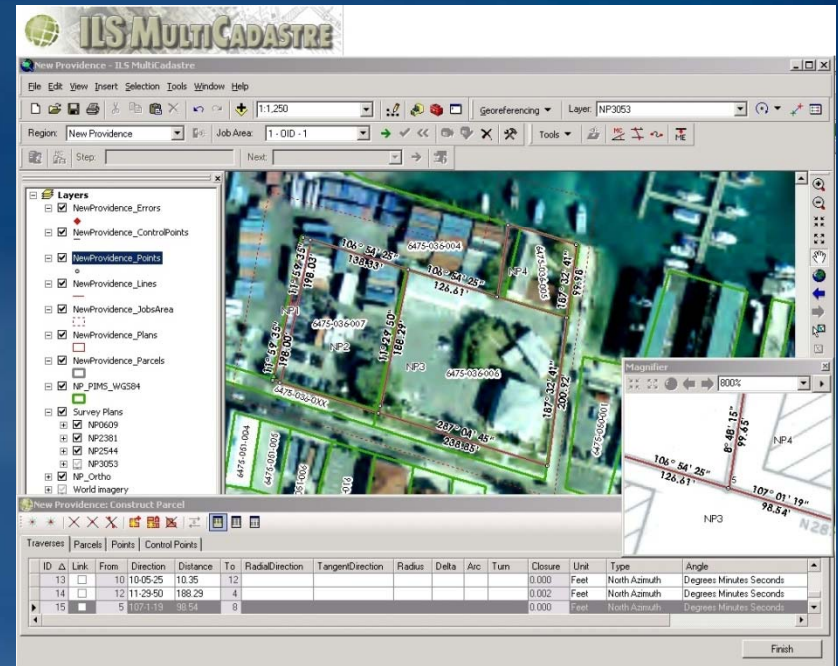
- **Secure Property Description – requires high precision**
  - Obtain land survey and formal plat
    - \$300-\$1000
    - 30 days
  - Obtain Legal Description based on land survey
    - 3 days
- **Verify survey with Land Survey Office**
  - 7 days



# Our New Methodology - Medeem

*Streamlined approach to land registration*

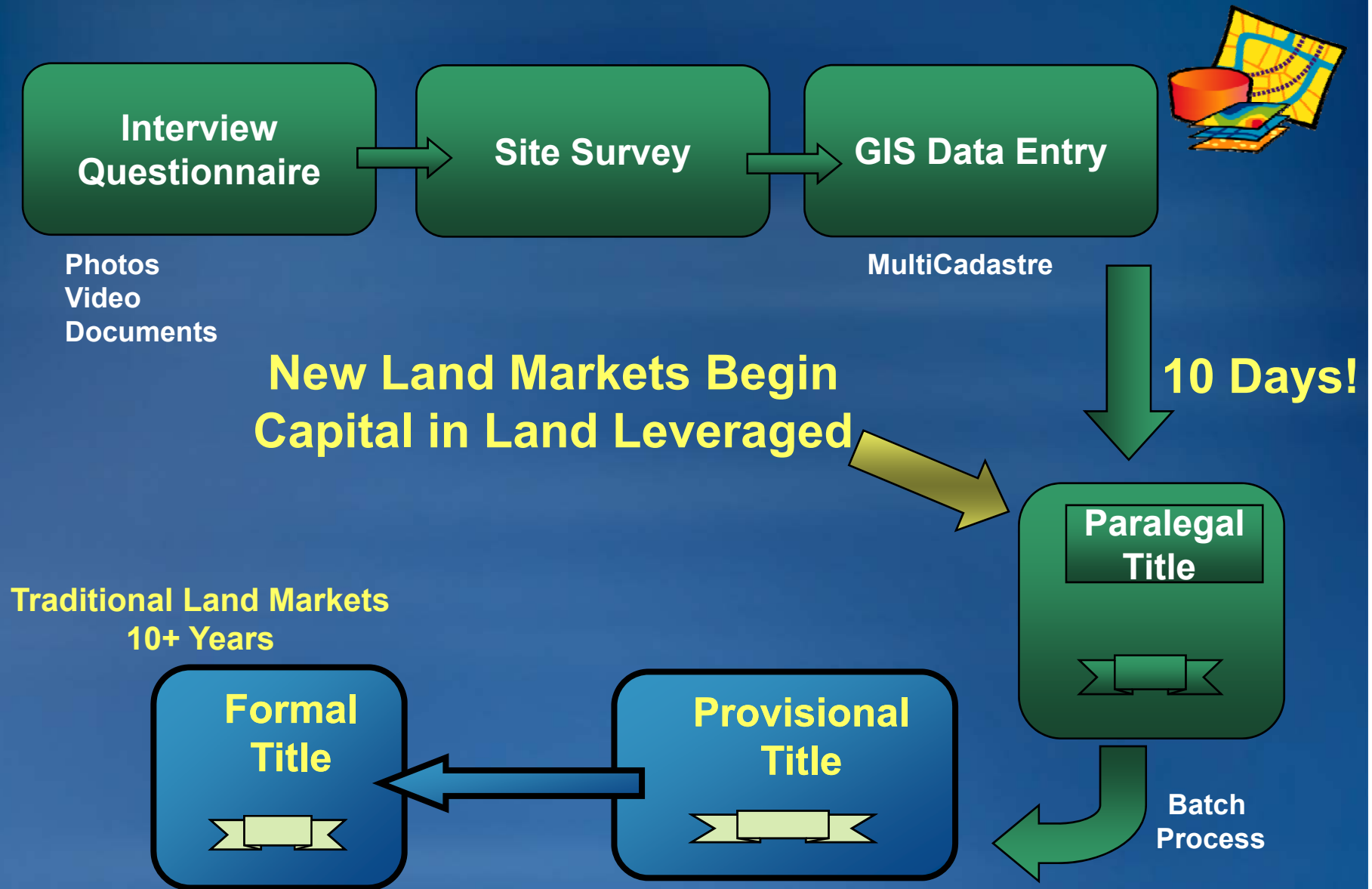
- Use consolidated onsite interview, survey and document review process
  - We go to the clients
- Leverage Technology
  - GIS
  - GPS
  - Titling software
  - Imagery
- Use data to derive a para-legal title certificate
  - “Provisional Title” is part of law
  - Paralegal title conforms to provisional title parameters



*Pre-approved approach – Registrar to issue provisional titles based on paralegal certificate*

# Our New Methodology

*Streamlined approach to land registration*





# Additional Unique Elements

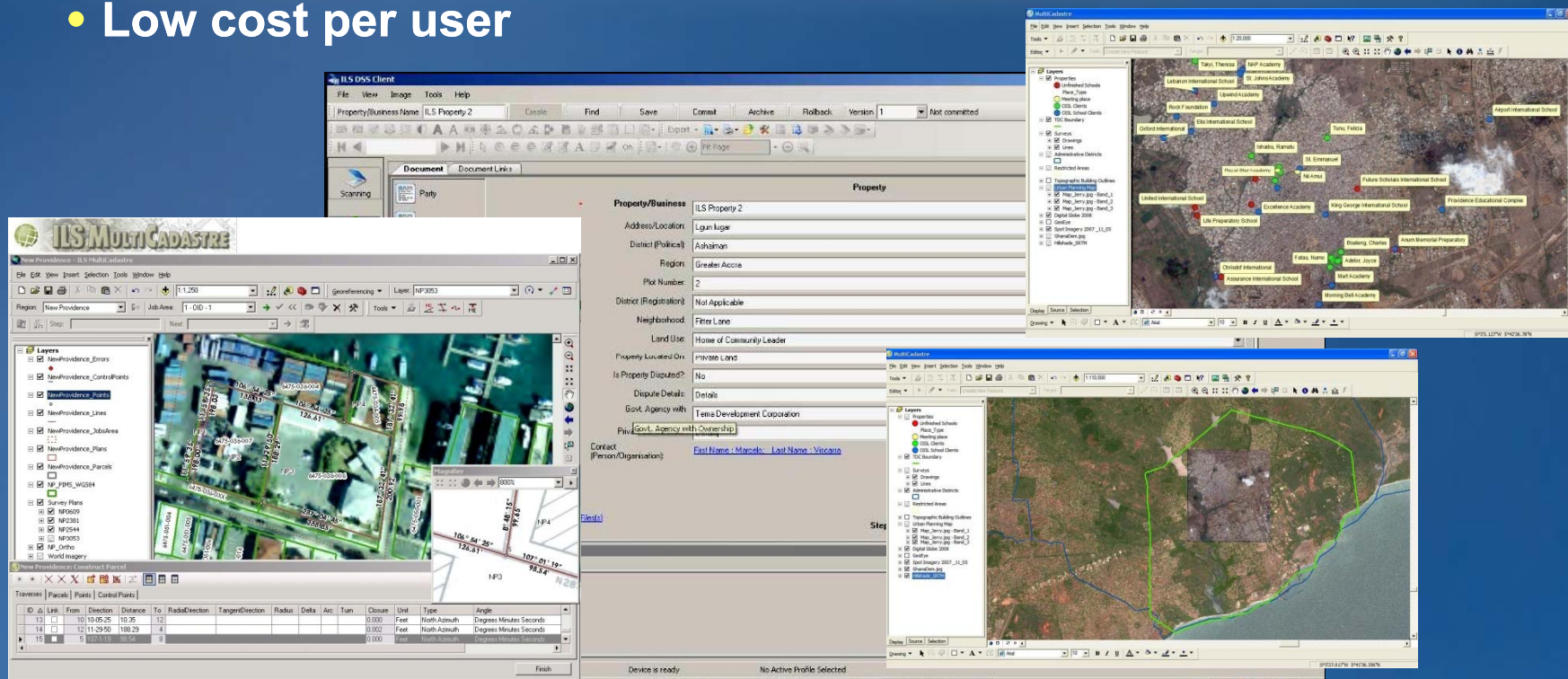
*Many benefits to GIS based land registration*

- Coupled to microfinance lending leveraging the microfinance lender as the “trusted broker”
  - *Loans and land registration*
- Leveraging paralegal title process
  - Microfinance lender can accept land as collateral
  - Begins to establish market value for land
- Opens floor to formalizing property rights for women
  - Encourages land ownership where joint obligor on loan
- Centralized GIS and Title Data
  - Many other uses (i.e. planning, health, etc.)
  - Provides means for third part repository in case of conflict, natural disaster, change of government, etc.

# Technology

## ESRI ArcGIS Server based system

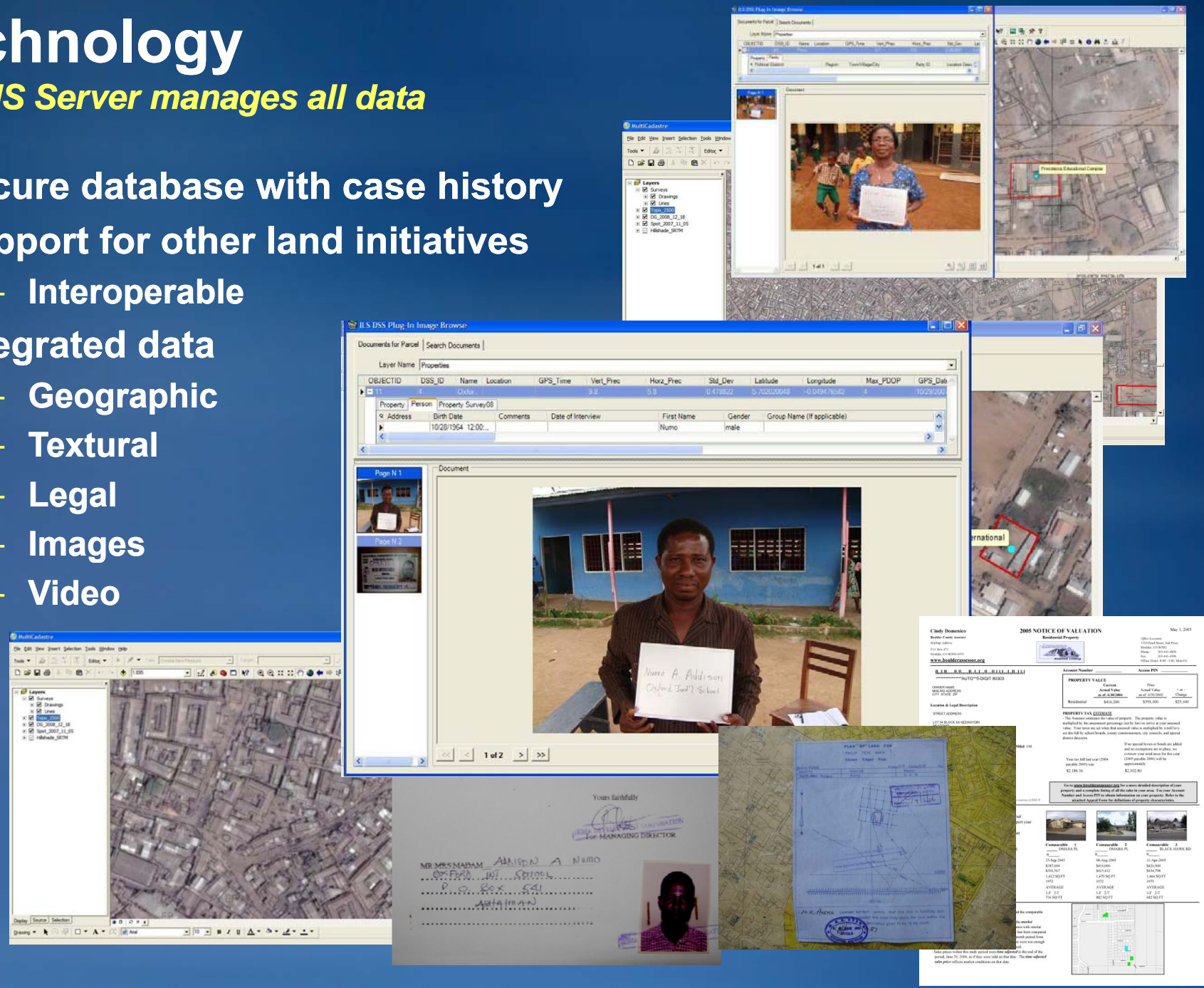
- **ArcGIS Server-based ILS MultiCadastre Titling Software manages all data and documents**
    - Property documents
    - Photographs
    - Video
  - **Low cost per user**
- 
- A screenshot of the MultiCadastre software interface. The main window displays a map of a coastal area with property boundaries. The title bar reads 'MultiCadastre'. The menu bar includes 'File', 'Edit', 'View', 'Insert', 'Selection', 'Tools', 'Window', and 'Help'. The toolbar contains various icons for map navigation and editing. A sidebar on the right contains icons for different data layers and tools. The status bar at the bottom shows '0/20000' and a scale bar.



# Technology

## ArcGIS Server manages all data

- Secure database with case history
- Support for other land initiatives
  - Interoperable
- Integrated data
  - Geographic
  - Textural
  - Legal
  - Images
  - Video





# Technology

## ILS MultiCadaastre leveraging ESRI ArcGIS Server

- Automated generated documents

- Lease request
- Paralegal title
- Lease forms



**Opportunity International**  
GIVING THE POOR A WORKING CHANCE

Next to Ghana Water Company  
Opposite Fire Service Station  
Tel: +233 (0) 20 2016003-6



**REPUBLIC OF GHANA**

LAND TITLE  
REGISTRATION LAW, 1986

LAND REGISTER  
VOL..... FOLIO.....

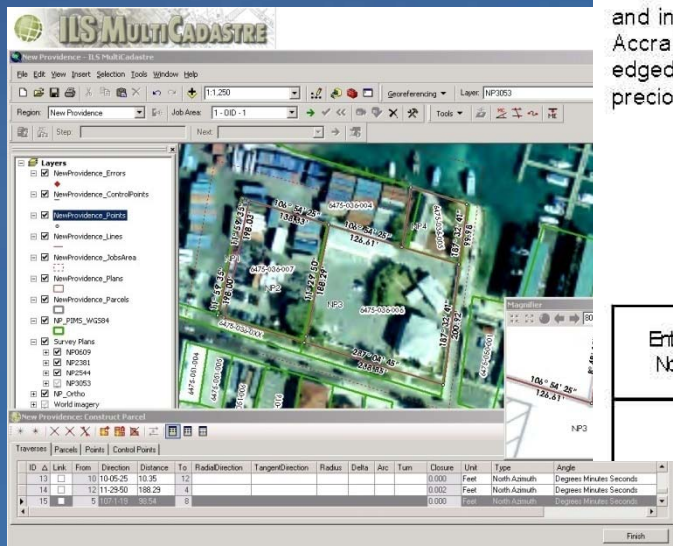
NO.....

### PARALEGAL REAL PROPERTY CERTIFICATE

THIS IS TO CERTIFY THAT NUMO ADDISON of in the Tema Region in the Republic of Ghana, husband and wife, is registered as tenant or lessee for a term of 60 years from the 1 of January, 1997 (less the last one day) (the lessee has an option with a possibility to renew for a further term of 20 years) with all the restrictions, encumbrances, liens and interests as are notified by memorial U and in ALL THAT piece or parcel of land in extent 0.105 hectare(s) more or less situated in the Accra Region of the Republic of Ghana aforesaid which said piece or parcel is edged with pink colour on Survey Plan No.105 annexed to this Certificate except the precious stones and timber whatsoever upon or under the said piece or parcel

CHIEF REGISTRAR OF LANDS

Entry No.	Date of Instrument	Date of Registration	Registered No.	MEMORIAL



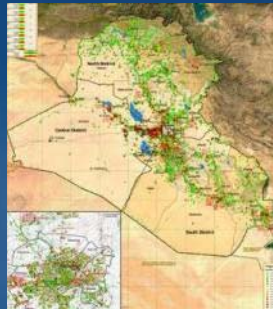


# GIS-Based Land Registration Adds Value

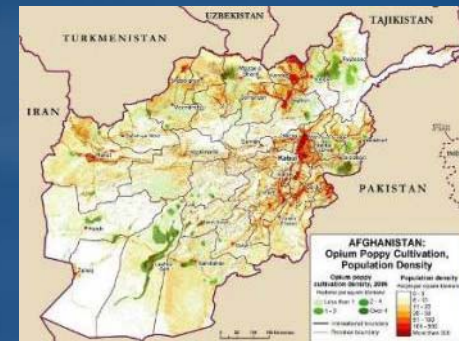
*Geographic information is the key. . .*

- Cadastre
- Land Registration
- Mapping
- Valuation
- Planning
- Survey
- Development
- Land Management
- Land Information Systems
- Spatial Data Infrastructures
- Urban Planning
  - Slum upgrading
  - Sanitation
  - Transportation
  - Safety
  - Flood zones
  - Hazardous areas
  - Illegal occupation
- Health & Human Services
  - Access to facilities
  - Illness tracking/Mapping
  - Managed care

Reconstruction  
*Iraq*



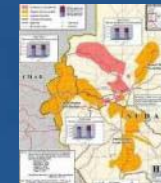
Opium Cultivation  
*Afghanistan*



Children Out Of School  
*Ethiopia*



Humanitarian Aid  
*Darfur*



# Types of Data Accuracy

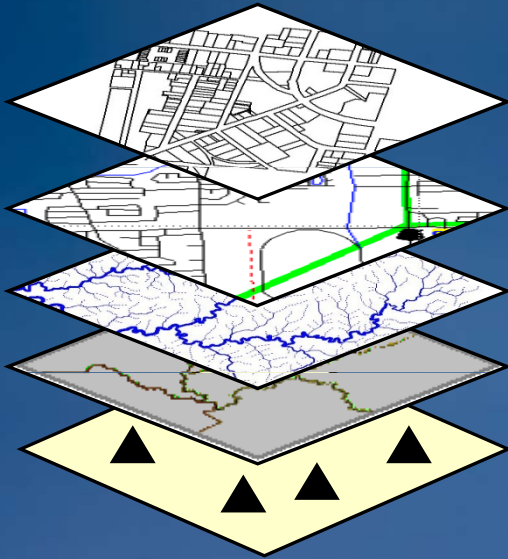
*Measures of data correctness*

- **Topological** – *how features relate to each other*
- **Attribute** – *non-graphical information about features*
- **Absolute Spatial** – *nearness to the true position*
- **Relative Spatial** – *how accurate relative to each other*
- **Temporal** – *how current is it*
- **Feature Identification** – *is it what we say it is*

*...data maintained in a structured environment*

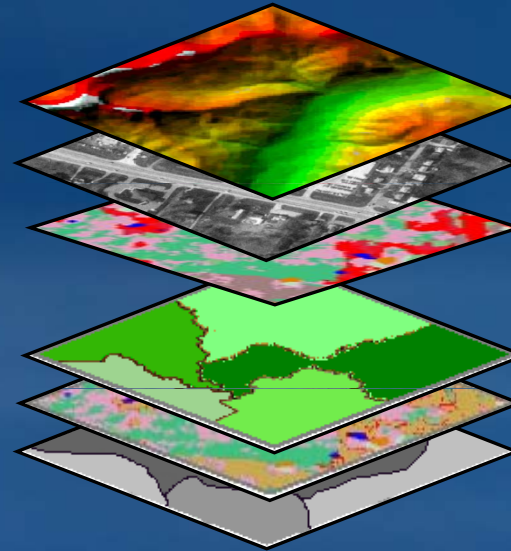
# GIS data

## Vector Data Layers



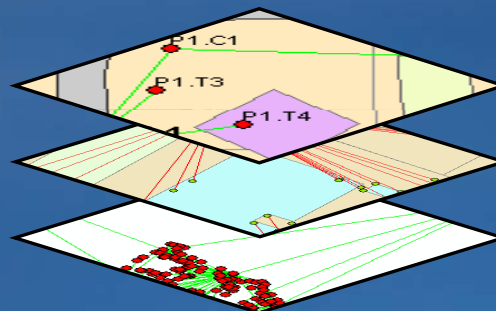
Land Ownership  
Transportation  
Surface Waters  
Boundaries  
Geodetic Control

## Raster Data Layers



Elevation  
Imagery  
Land cover  
  
Soils  
Vegetation  
Slope  
Others ...

## Survey Data Layers (Projects)



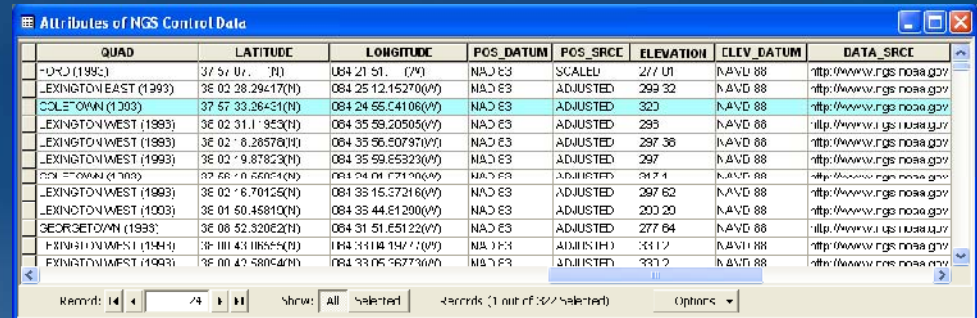
Cadastral Fabric  
Buildings  
Total Station Survey  
GPS Survey

Special editing tools for each data type

# Components of geographic data

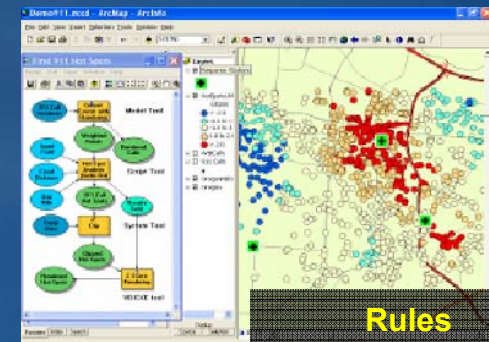
*Properly structuring data powers new uses. . .*

ATTRIBUTES



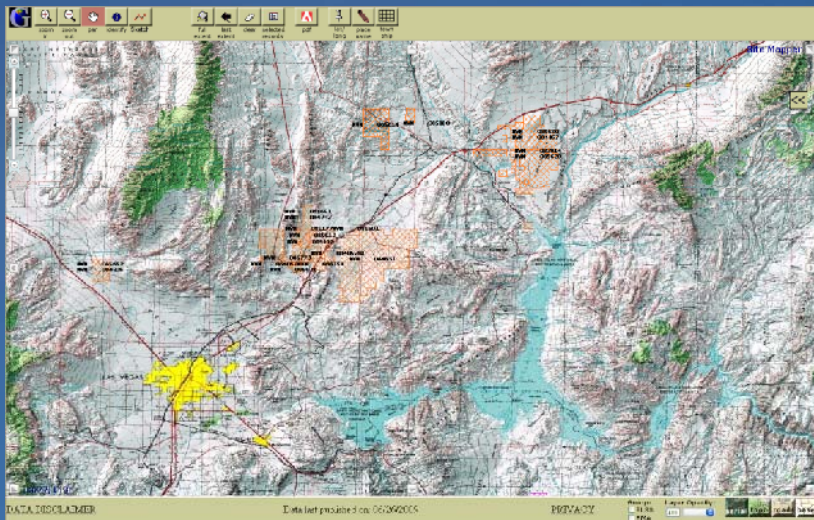
QUAD	LATITUDE	LONGITUDE	PCS_DATUM	PCS_SRCE	ELEVATION	CLEV_DATUM	DATA_SRCE
DMC (1993)	37 57 07.17(N)	084 21 51.17(W)	NAD 83	SCALED	277.01	NAD 88	http://www.ngs.noaa.gov
LEXINGTON EAST (1993)	38 02 28.29417(N)	084 25 12.15270(W)	NAD 83	ADJUSTED	299.32	NAD 88	http://www.ngs.noaa.gov
COLEMAN (1993)	37 57 33.36431(N)	084 24 55.54106(W)	NAD 83	ADJUSTED	320	NAD 88	http://www.ngs.noaa.gov
LEXINGTON WEST (1993)	38 02 31.11953(N)	084 35 59.20505(W)	NAD 83	ADJUSTED	295	NAD 88	http://www.ngs.noaa.gov
LEXINGTON WEST (1993)	38 02 8.26578(N)	084 35 56.50797(W)	NAD 83	ADJUSTED	297.36	NAD 88	http://www.ngs.noaa.gov
LEXINGTON WEST (1993)	38 02 9.87823(N)	084 35 59.55323(W)	NAD 83	ADJUSTED	297	NAD 88	http://www.ngs.noaa.gov
DMC (1993)	37 57 07.17(N)	084 21 51.17(W)	NAD 83	ADJUSTED	277.01	NAD 88	http://www.ngs.noaa.gov
LEXINGTON WEST (1993)	38 02 6.70125(N)	084 35 15.37316(W)	NAD 83	ADJUSTED	297.62	NAD 88	http://www.ngs.noaa.gov
LEXINGTON WEST (1993)	38 01 50.45810(N)	084 35 44.81200(W)	NAD 83	ADJUSTED	200.20	NAD 88	http://www.ngs.noaa.gov
GEORGETOWN (1993)	38 08 52.32082(N)	084 31 51.65122(W)	NAD 83	ADJUSTED	277.64	NAD 88	http://www.ngs.noaa.gov
LEXINGTON WEST (1993)	38 01 47.10855(N)	084 35 14.14710(W)	NAD 83	ADJUSTED	277.64	NAD 88	http://www.ngs.noaa.gov
LEXINGTON WEST (1993)	38 01 47.58054(N)	084 35 05.56773(W)	NAD 83	ADJUSTED	277.64	NAD 88	http://www.ngs.noaa.gov

BEHAVIOR



**Rules**  
Local streets and highways may not intersect

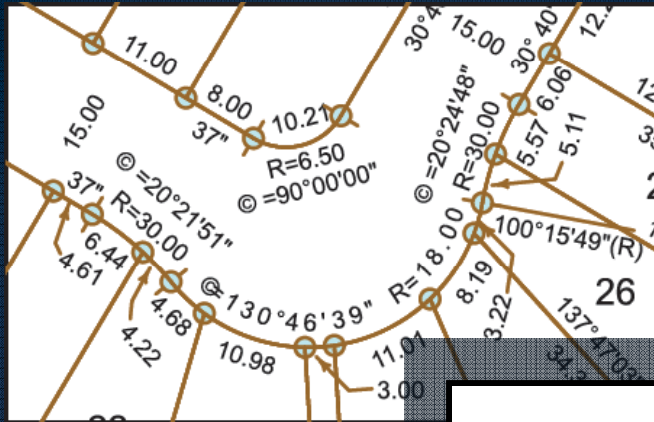
GEOMETRY



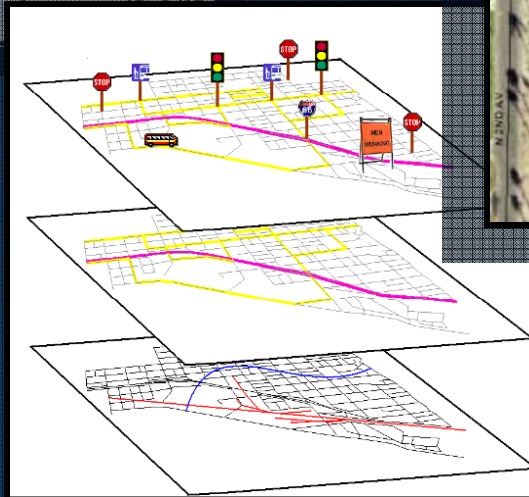


# Most GIS layers register to:

# Photogrammetry/Ortho Base



# Parcels

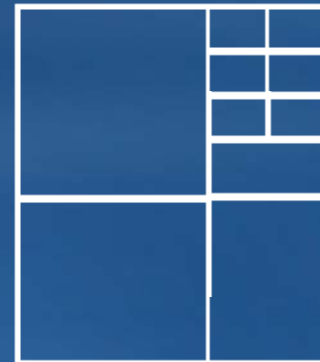


# Transportation



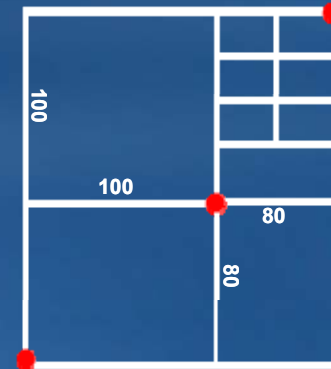
# Three tiers of parcel data management

- Ink on mylar – scan/digitize
- COGO/CAD
- Survey controlled parcel fabric



# Three tiers of parcel data management

- Ink on mylar
- COGO/CAD – dimensions used for data entry
- Survey controlled parcel fabric



# Three tiers of parcel data management

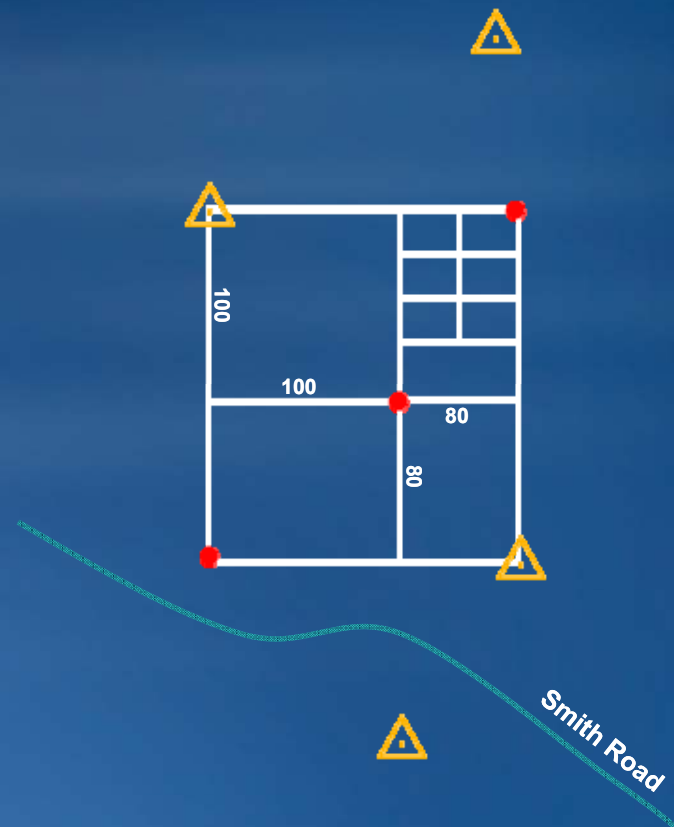
- Ink on mylar
- COGO/CAD
- **Parcel Fabric**
  - Plan Dimensions (COGO)
  - Control points
  - LSA
  - Associated Data Layers Adjusted





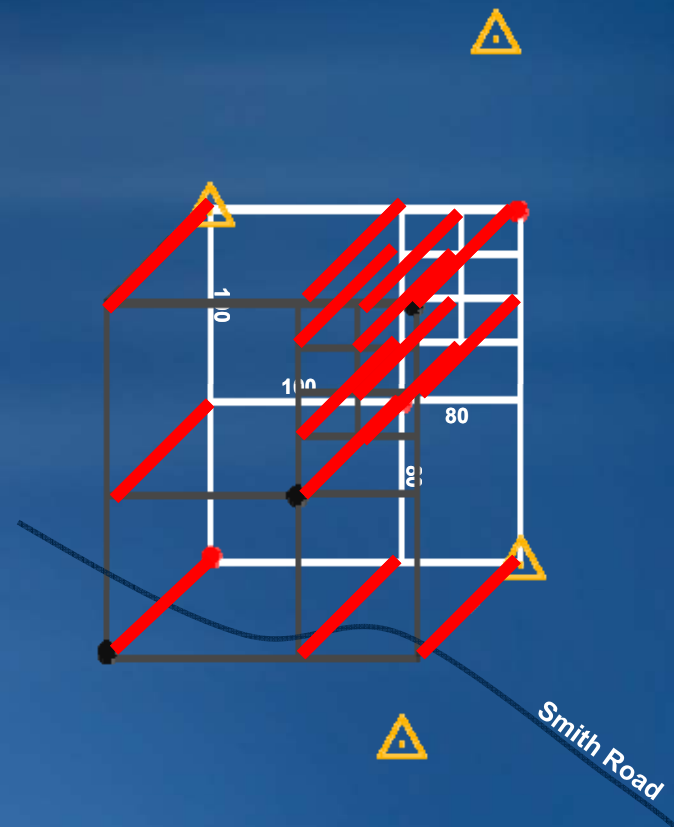
# Three tiers of parcel data management

- Ink on mylar
- COGO/CAD
- **Parcel Fabric**
  - Plan Dimensions (COGO)
  - Control points
  - LSA
  - Associated data layers



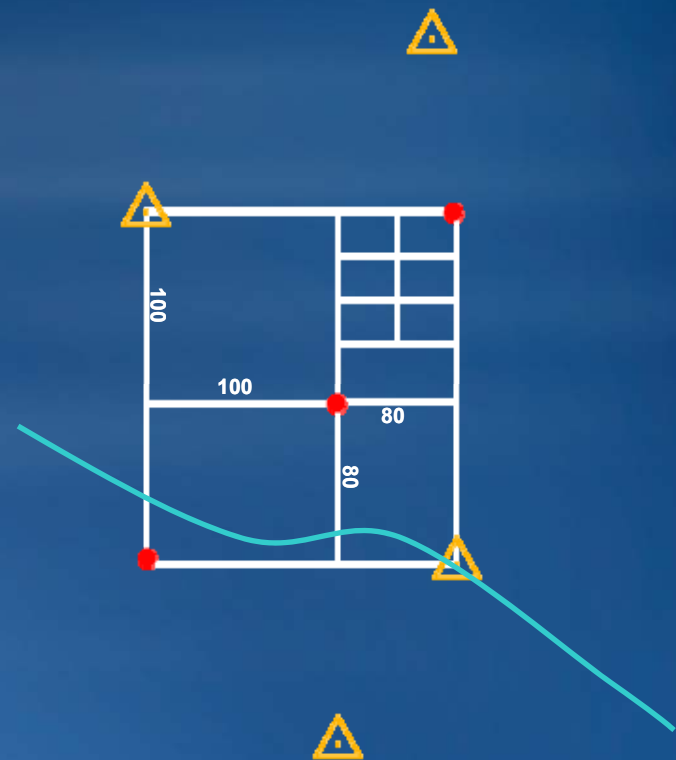
# Three tiers of parcel data management

- Ink on mylar
- COGO/CAD
- **Parcel Fabric**
  - Plan Dimensions (COGO)
  - Control points
  - LSA
  - Associated data layers



# Three tiers of parcel data management

- Ink on mylar
- COGO/CAD
- **Parcel Fabric**
  - Plan Dimensions (COGO)
  - Control points
  - LSA
  - Associated data layers



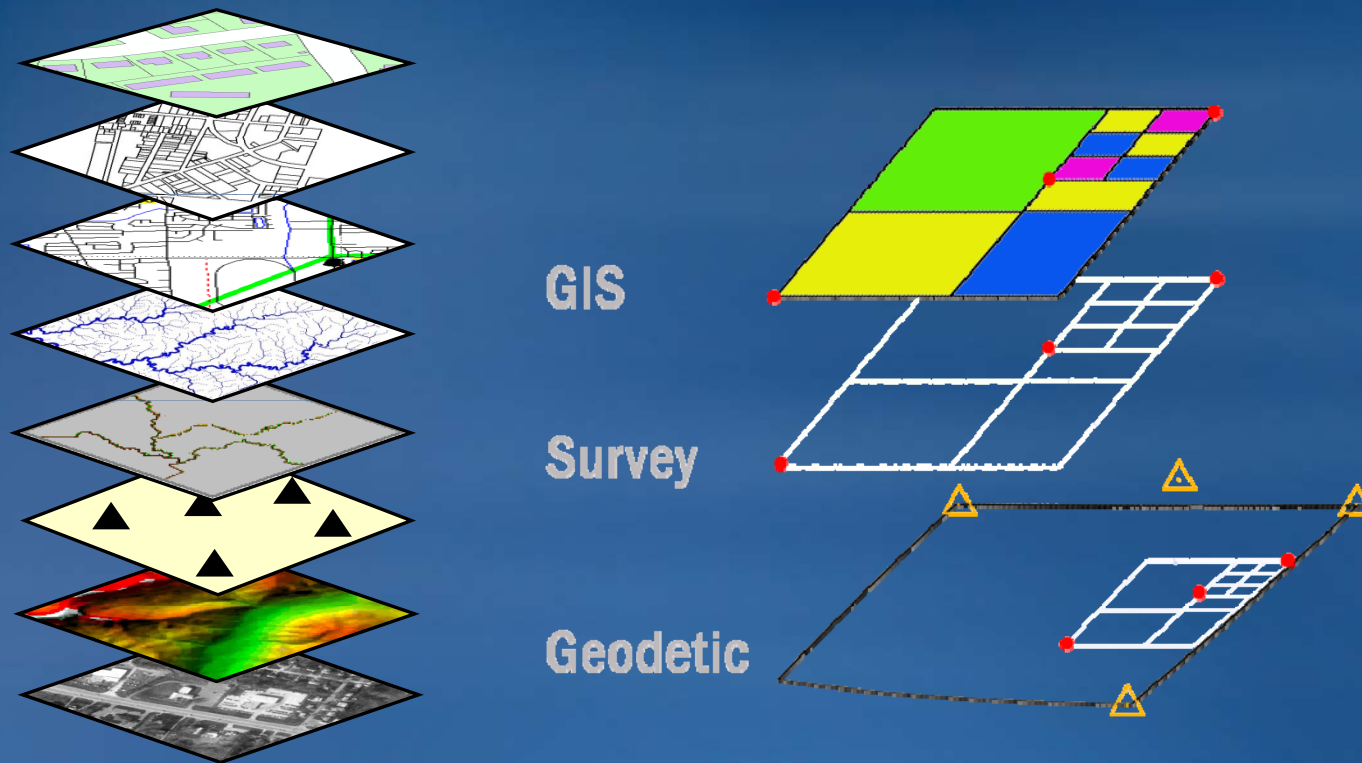
# Before and After LSA

*Survey-based parcel adjustment aligns parcels on orthos*





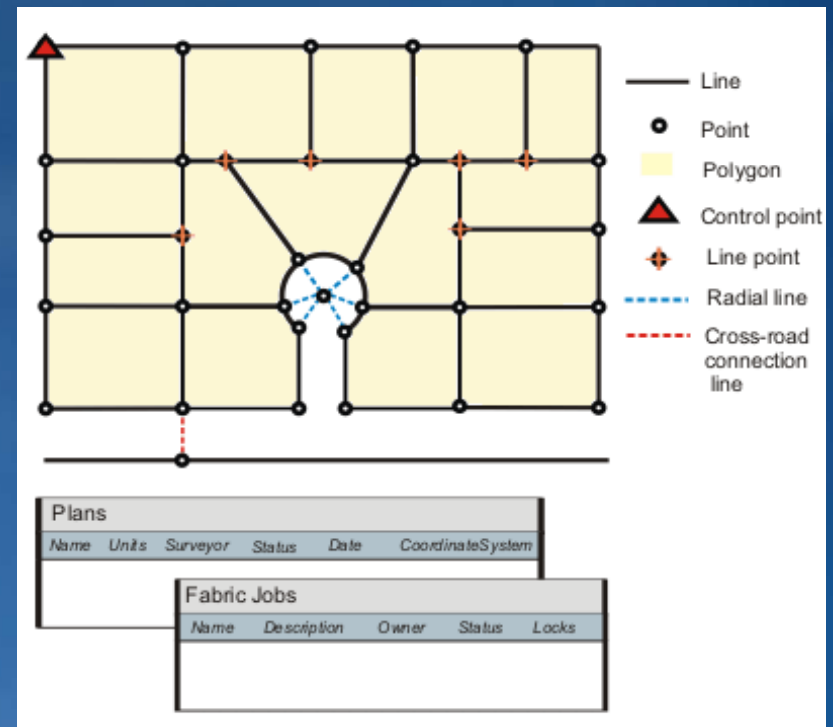
GIS Data *Connected* to Survey Control Network  
GIS Data *Incrementally Improves* with Record Measurements



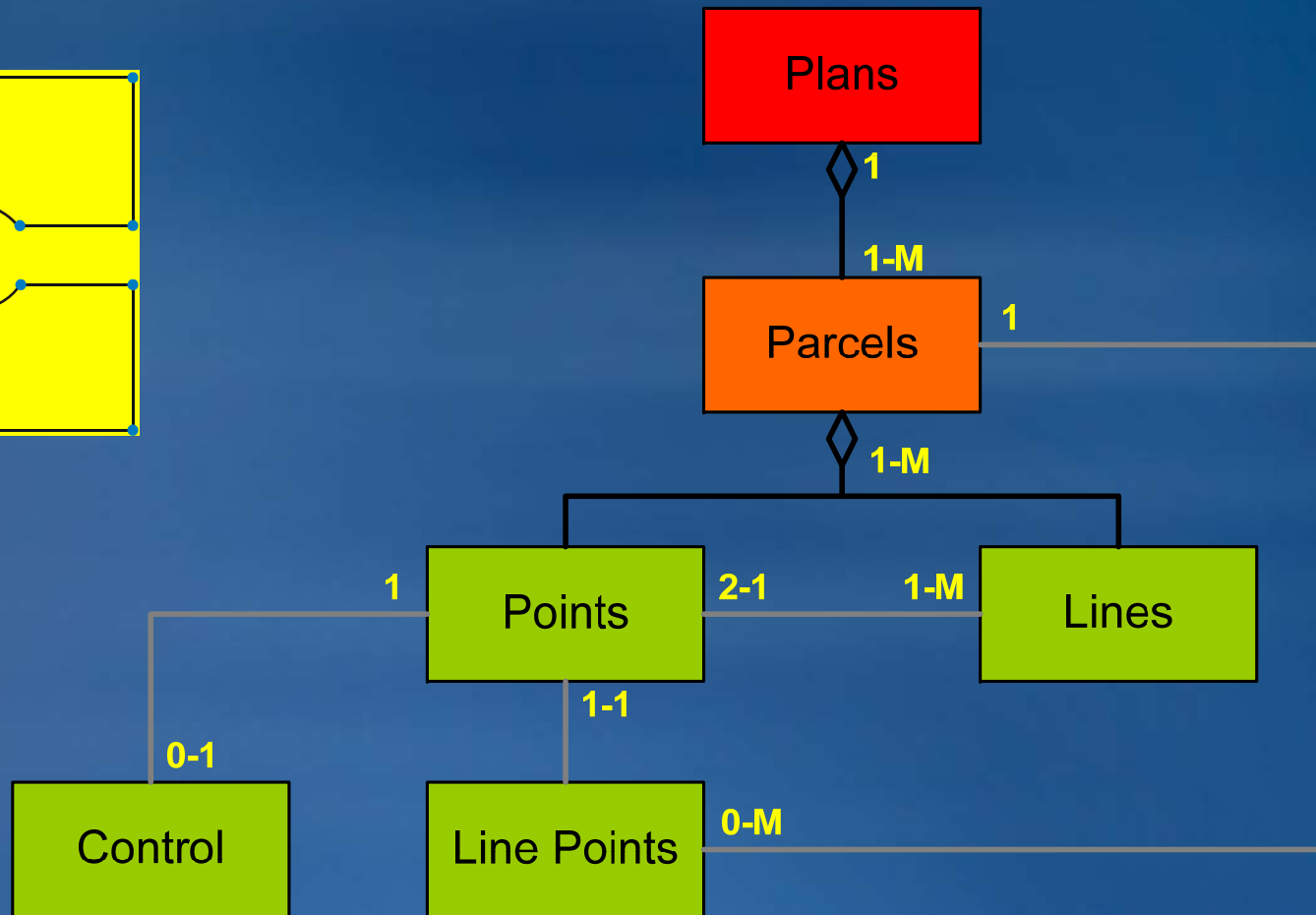
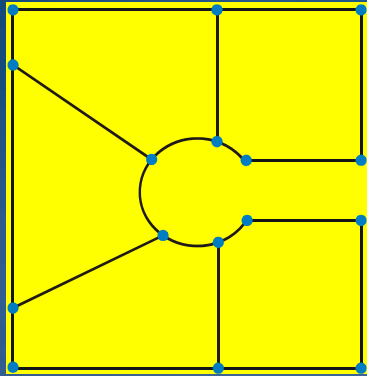
# What is Parcel Fabric?

## *Parcel Fabric is a new dataset*

- A **continuous surface** of connected parcels
- A **dimensioned boundary network**
- **Internal Topology** defined by **common parcel corners**
- Adjusted by **Least-Squares**



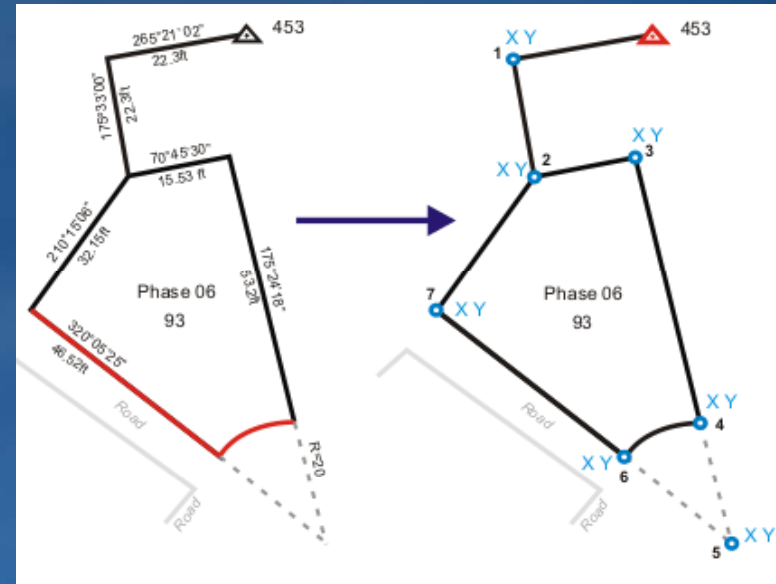
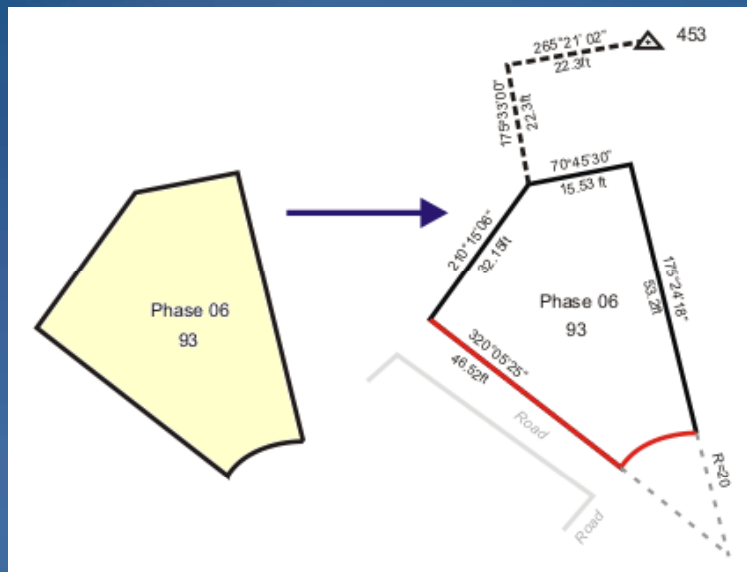
# Parcel Fabric Data Model



# Parcel Data Model

Parcel polygon  
has **1 – M** Lines

Parcel Line  
has **2** Points

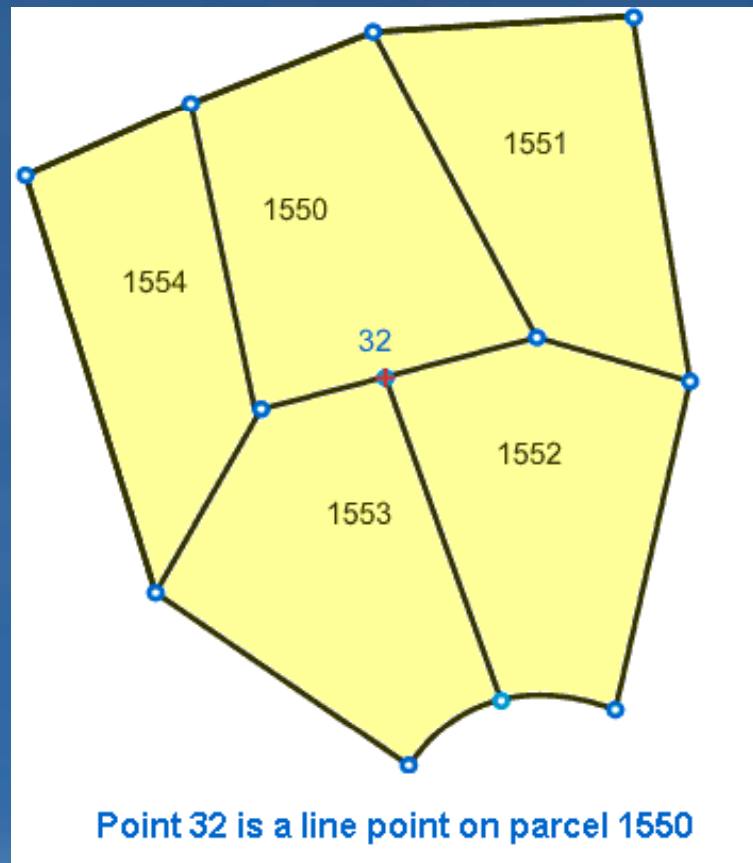


*Lines store recorded dimensions. . . Points are common*



# Line points

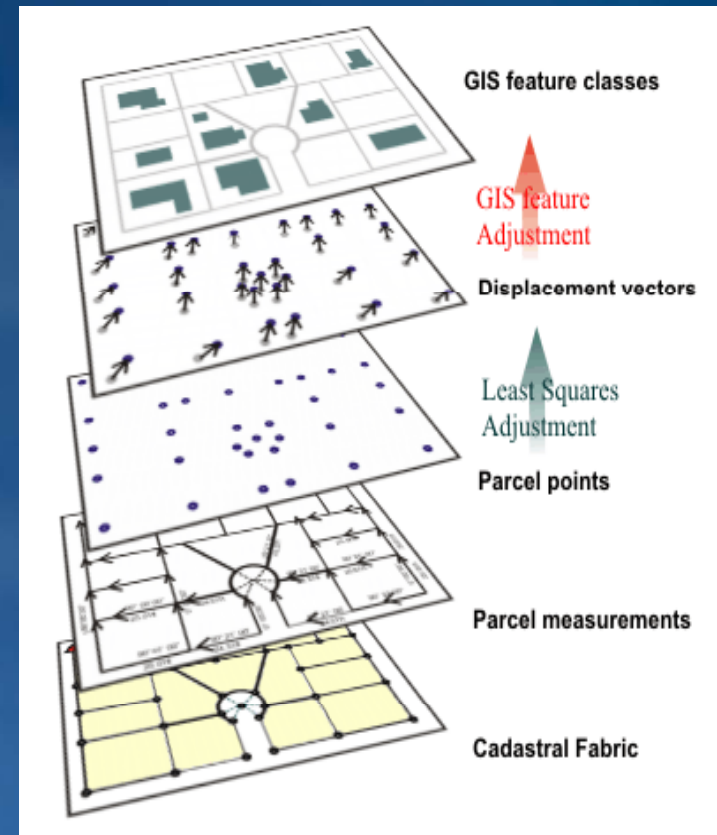
- A parcel point becomes a **Line Point** when it sits on the boundary of an adjacent parcel, but does not split the boundary line.



# GOAL of the Parcel Manager

Build a simple system to:

- Represent **land record information** in the GIS
- Provide a core model for a **Land Information System (LIS)**
- Process **GPS coordinates and land records** together in a productive editing environment
- **Improve and maintain the accuracy** of boundary geometry and associated GIS layers



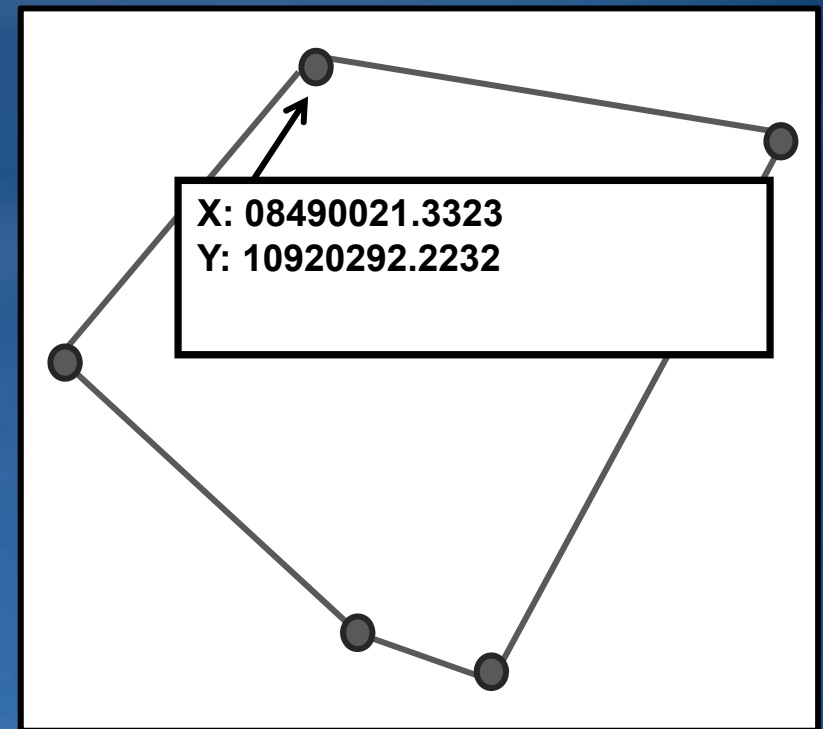
# What is different about a parcel fabric?

*Two layers of data, and history preserved*

A Legal Representation



A GIS Representation



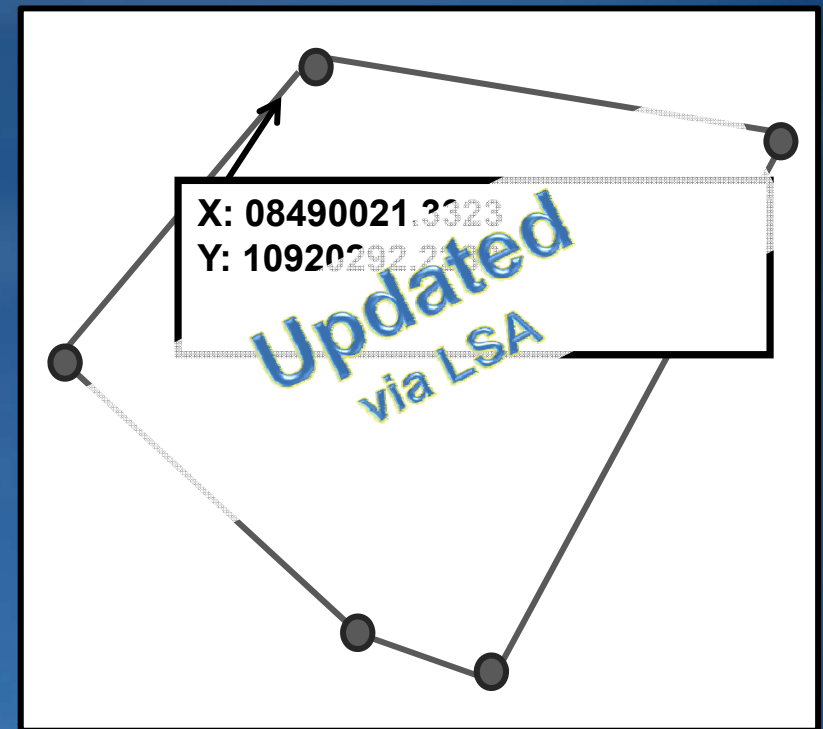
# What is a parcel fabric?

*Two layers of data, and history preserved*

## A Legal Representation



## A GIS Representation





# Why go through this effort?

- Represent **land record information** GIS
- Process **precise coordinates and land records** together in a productive editing environment
- **Improve and maintain the accuracy** of boundary geometry and associated GIS layers
- Integration of survey plans deeds
- Standardized procedures
- Eliminate duplicate data
- Enterprise system use – best data from the record

# Enterprise GIS in Local Government

*Successful Enterprise GIS sites follow common patterns. . .*

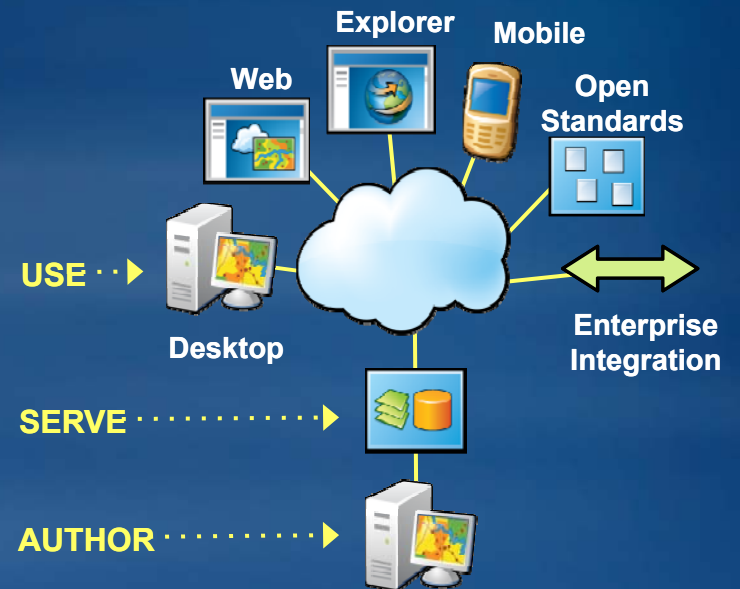
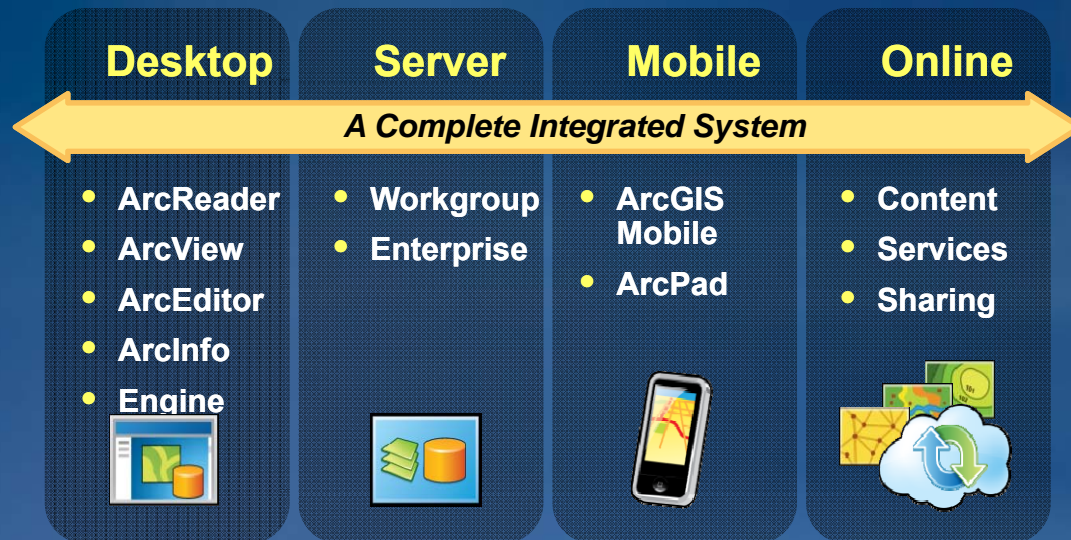


# OUR WORK





# ArcGIS



*... For Authoring, Serving & Using Geography Everywhere*

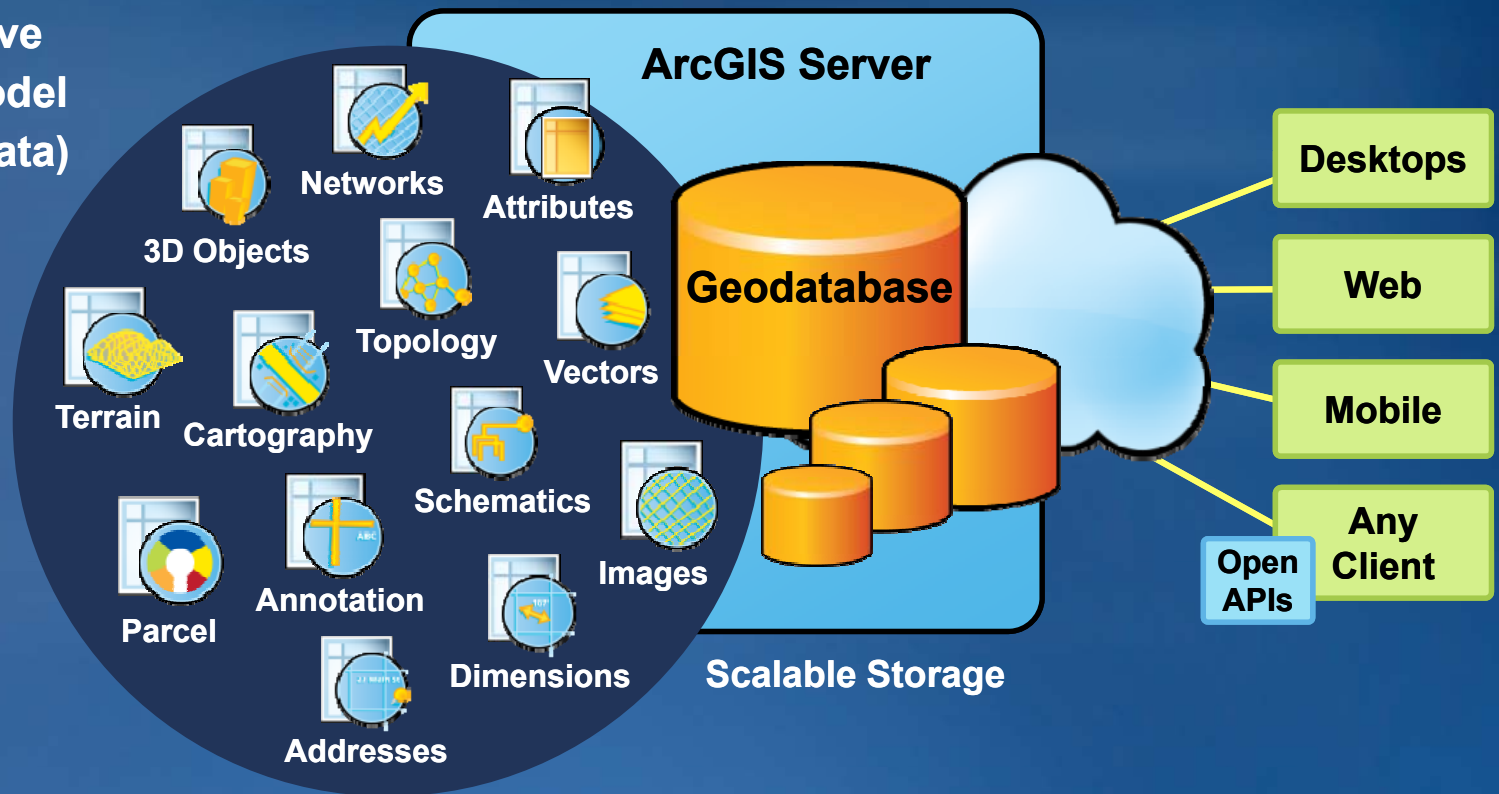


# ArcGIS

# GEODATABASE

*Organizes Your Geographic Information*

**Comprehensive  
Information Model  
(Any Type of Data)**

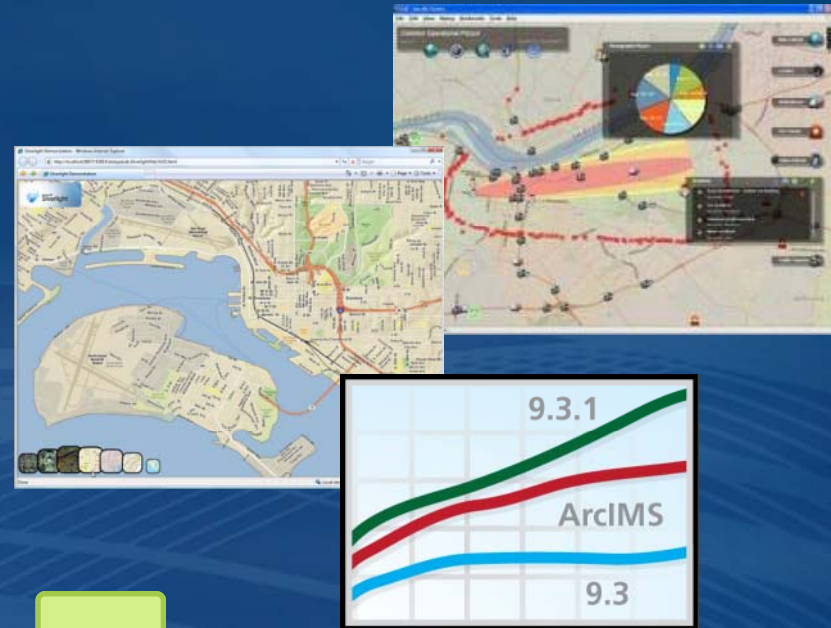


*Essential for Leveraging the Full Capabilities of ArcGIS*

# ArcGIS 9.3.1

*Has Substantially Improved Our Platform*

- Quality
- Performance & Scalability
- Fast Dynamic Maps
- Rich Clients (Web 2.0)
- Easy Data Sharing
- Expanding Online Content
- Simplified Licensing

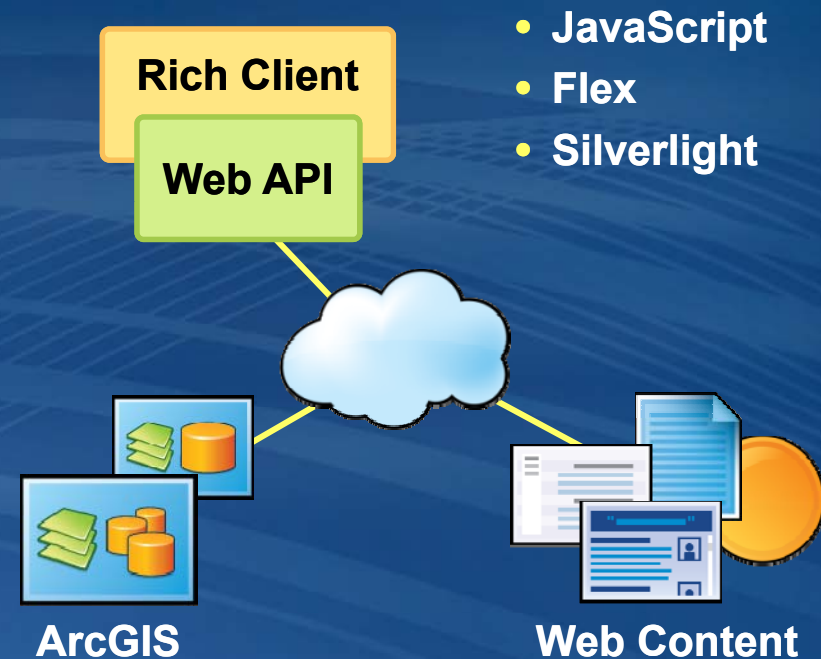
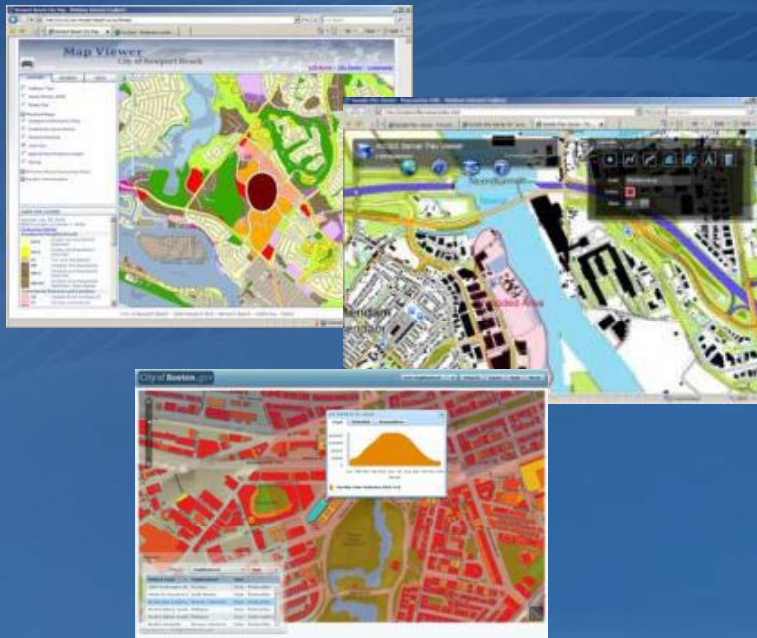


*Providing a Great Platform for Web GIS*

# Rich Internet Applications (RIAs) Are Growing Rapidly

*Providing a Powerful Way To Access & Integrate GIS Services*

- Highly Interactive
- Lightweight
- Integrating Multiple Services



*Part of ArcGIS Server . . .  
. . . Free for Noncommercial Use*



# Online Services are a Key Component of ArcGIS

*Ready-to-Use Maps & Imagery*

## Imagery

### Streets

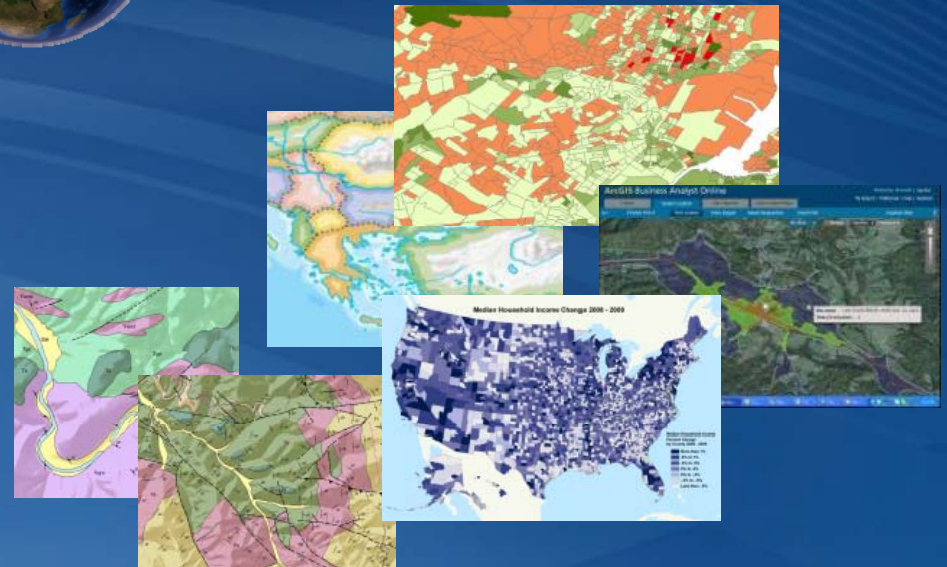
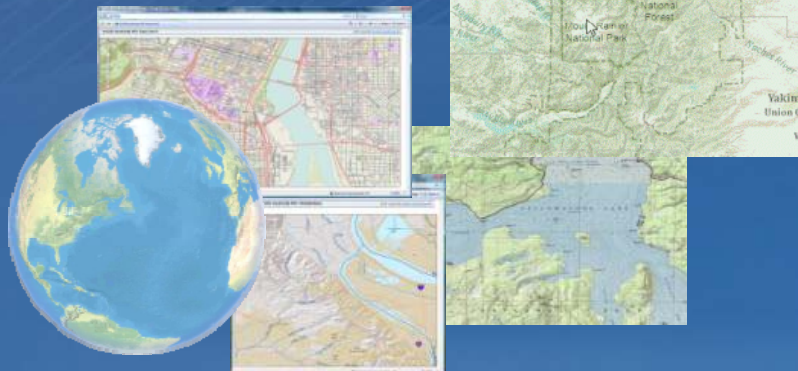


## Delivered to Users

- Online
- DVD Media
- Appliance

## Demographic & Thematic

### Topographic





## Free, Easy & Exciting GeoVisualization

- 
- The diagram shows a central blue cloud connected to four different data sources by yellow lines. On the left, under the label 'Web Data', there are three icons: a document with a magnifying glass, a stack of three green documents, and an orange cylinder. On the right, under the label 'Local Data', there is an orange cylinder and a blue sphere. At the top, there is a browser window icon showing a globe. At the bottom, there are two document icons, one of which contains a user profile picture. The entire diagram is set against a dark blue background with a grid pattern.



# Final Thoughts

*Gettin' on the enterprise bus. . .*

- You may need to maintain data differently in the past
  - New uses
  - New dependencies
- Requirements will continue to evolve
  - New users, new requirements
- Parcel data is key for many reasons
  - Large user community
  - Many uses
  - Framework for accuracy



## Today



## The Future



# Thanks!



**Brent A. Jones, PE, PLS**  
**ESRI**  
**Survey/Engineering/Cadastre**  
**Industry Manager**  
**[bjones@esri.com](mailto:bjones@esri.com)**  
**Twitter – BrentJones\_ESRI**