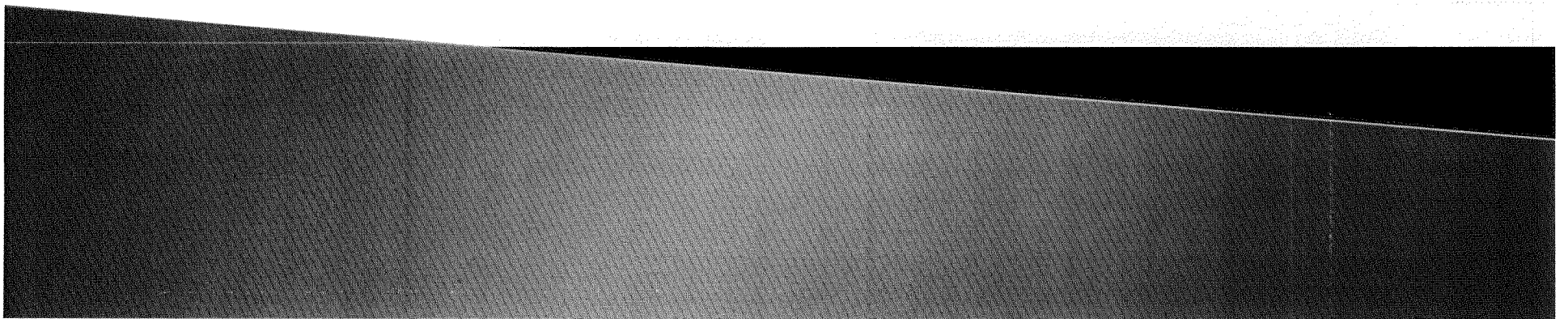


PLACER COUNTY ASSESSOR

Imaging for a Paperless Office



INFASCTURCTURE

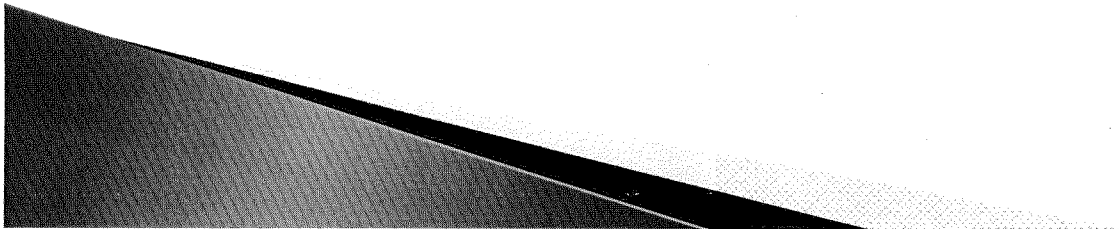
- ▶ 1 Dedicated virtual server with
 - Two 350 GB virtual drives – total of 700GB space.
 - Annual cost \$3,250
- ▶ In-house programs
 - Scanning program
 - Other applications that produce .pdf files
- ▶ Scanners
 - 6 Cannon Scanners
 - 2 DesignJet Scanners (42" Wide Bed)

T-2300 NEW
HP - ~~MFP 815~~
815 MFP

Doc/File Type	GB	COUNT
AddressChanges	6	37,555
AgencyAuthorizations	0	
Appeals	16	29,582
Appraisals	29	114,494
ASMTAPPEALS	1	8,971
Audits	<1	2,947
BPS	24	44,294
BuildRec	193	152,204
Costing	9	49,771
Deeds	68	525,716
Drawings	33	82,719
Exclusions	11	13,938
Exemptions	37	176,359
HaileyMaps	3	
Maps	8	35,090
Notes_Correspondence	5	28,573
Ownership	4	15,182
PCOR	55	303,125
Photo	25	43,758
PPDocs	1	13,331
PropStat	2	7,665
Reviews	13	33,248
RollCorrection	3	23,632
Splits	4	8,560
TopSheets	68	177,918
WorkSheets	5	121,745
	620	2,050,377

HISTORY

- ▶ Project started in 1999
 - One Cannon scanner and in house scanning application.
 - Started with Homeowner exemption cards
 - Deeds back to 1994
- ▶ Virtually complete summer 2012
 - Building records
 - Top Sheets



MAPPING DIVISION- THE NEW SPLIT ROUTING LOG

STARTED USING SPRING 2007

Split Log ASR File Edit Reports... Tools Help

2008-2009 Open Items Only <all>

MapType	RecordingRef	RecordingDate	Descr	SubdivisionName	AssignedTo	DateAssigned	DateCompleted	DateToGIS
Internal	2008IOWNRG01	7/1/2007	002-013-019, 020		GHM	6/27/2007	7/16/2007	8/01/2007
Internal	2008IOWNRG02	7/1/2007	075-100-027, 035		GHM	7/20/2007	7/20/2007	8/14/2007
Internal	2008IOWRQM01	7/1/2007	097-093-002, 097-100-016		MMG	7/9/2007	8/14/2007	8/01/2007
Internal	2008IOWRQM02	7/1/2007	102-080-009, 011		MMG	7/17/2007	7/17/2007	8/02/2007
Internal	2008IOWRQM03	7/1/2007	013-192-026,027,034		MMG	8/23/2007	8/23/2007	
Remap	2008IREMAP1	6/6/2007	076-130-001 THRU 026		MMG	6/6/2007	6/6/2007	
Remap	2008IREMAP2		110-081-001 THRU 043		MMG			
Internal	2008ISPLID08	1/30/2007	064-141-052		DGV	4/11/2007	6/6/2007	
Internal	2008ISPLID11	2/15/2007	001-032-032		DGV	5/29/2007	5/31/2007	8/02/2007
Internal	2008ISPLID12	2/28/2007	096-252-009		DGV	6/1/2007	6/6/2007	
Internal	2008ISPLID13	2/20/2007	064-141-038		DGV	4/11/2007	6/6/2007	8/02/2007
Internal	2008ISPLID14	3/6/2007	021-272-001, 005		DGV	6/4/2007	6/6/2007	8/01/2007
Internal	2008ISPLID15	3/7/2007	092-010-043, 044		DGV	6/5/2007	6/6/2007	
Internal	2008ISPLID16	3/12/2007	077-031-092		DGV	6/6/2007	6/7/2007	7/19/2007
Internal	2008ISPLIM01	1/12/2007	363-010-091		MMG	3/27/2007	3/27/2007	7/17/2007
Internal	2008ISPLIM02	2/13/2007	017-270(POR RD) [017-270-07		MMG	4/16/2007	4/16/2007	8/03/2007
Internal	2008ISPLIM03	1/18/2007	075-060-031		MMG	4/6/2007	4/6/2007	8/02/2007
Internal	2008ISPLIM04	2/16/2007	490-090-064		MMG	4/30/2007	5/30/2007	7/31/2007

Fiscal Year: 2008-2009	Number of APN's to Split: 2	Assigned To: GHM	WorkItem: Mapping
Map Type: Internal	Number of New APN's: 1	Date Assigned: 6/27/2007	Central Support
Recording Ref: 2008IOWNRG01	Deed Ref:	Date Completed: 7/16/2007	Business/Uns
Recording Date: 7/1/2007	Subdivision Name:		Exemptions
Descr: 002-013-019, 020			Real Property
Notes: Combined Per Owner's Request			
		GIS	
		Date Assigned: 8/01/2007	
		Total APN's: 1	
		# Completed: 1	

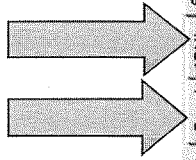
Item Count = 261

Buttons: New, Save, Cancel, Delete, Create Routing, E-Mail, Docs, Print Screen

Footer: mpts1, Print Screen, SShankar

DOCUMENT, HISTORY AND MAP ACCESS

History Tab
Deed Tab



Split Log - ASR

File Edit Reports... Tools Help

2008-2009 Open Items Only

MapType	RecordingRef	RecordingDate	Descr	SubdivisionName	AssignedTo	DateAssigned	DateCompleted	DateToGIS
Internal	2008IOWNRG01	7/1/2007	002-013-019, 020		GHM	6/27/2007	7/16/2007	8/01/2007
Internal	2008IOWNRG02	7/1/2007	075-100-027, 035		GHM	7/20/2007	7/20/2007	8/14/2007
Internal	2008IOWRQM01	7/1/2007	097-093-002, 097-100-016		MMG	7/9/2007	8/14/2007	8/01/2007
Internal	2008IOWRQM02	7/1/2007	102-080-009, 011		MMG	7/17/2007	7/17/2007	8/02/2007
Internal	2008IOWRQM03	7/1/2007	013-192-026, 027, 034		MMG	8/23/2007	8/23/2007	
Remap	2008IREMAP1	6/6/2007	076-130-001 THRU 026		MMG	6/6/2007	6/6/2007	
Remap	2008IREMAP2		110-081-001 THRU 043		MMG			
Internal	2008ISPLID08	1/30/2007	064-141-052		DGV	4/11/2007	6/6/2007	
Internal	2008ISPLID11	2/15/2007	001-032-032		DGV	5/29/2007	5/31/2007	8/02/2007
Internal	2008ISPLID12	2/28/2007	096-252-009		DGV	6/1/2007	6/6/2007	
Internal	2008ISPLID13	2/20/2007	064-141-038		DGV	4/11/2007	6/6/2007	8/02/2007
Internal	2008ISPLID14	3/6/2007	021-272-001, 005		DGV	6/4/2007	6/6/2007	8/01/2007
Internal	2008ISPLID15	3/7/2007	092-010-043, 044		DGV	6/5/2007	6/6/2007	
Internal	2008ISPLID16	3/12/2007	077-031-092		DGV	6/6/2007	6/7/2007	7/19/2007
Internal	2008ISPLIM01	1/12/2007	363-010-091		MMG	3/27/2007	3/27/2007	7/17/2007
Internal	2008ISPLIM02	2/13/2007	017-270(POR RD) (017-270-07		MMG	4/16/2007	4/16/2007	8/03/2007
Internal	2008ISPLIM03	1/18/2007	075-060-031		MMG	4/6/2007	4/6/2007	8/02/2007
Internal	2008ISPLIM04	2/16/2007	490-090-064		MMG	4/30/2007	5/30/2007	7/31/2007

Fiscal Year: 2008-2009
 Map Type: Internal
 Recording Ref: 2008IOWNRG01
 Recording Date: 7/1/2007
 Descr: 002-013-019, 020
 Notes: Combined Per Owner's Request
 Number of APN's to Split: 2
 Number of New APN's: 1
 Deed Ref:
 Subdivision Name:
 Mapping: Assigned To: GHM, Date Assigned: 6/27/2007, Date Completed: 7/16/2007
 WorkItem: Mapping, Central Support, Business/Uns, Exemptions, Real Property
 Date Assigned: 6/27/2007
 Total APN's: 1
 # Completed: 1
 Item Count = 261
 Maps & Documents

New Save Cancel Delete Create Routing E-Mail Docs Print Screen
 mpt1 Print Screen SShankar

Split Log

File Edit Reports... Tools Help

Split Log

Asmt	FeeParcel	AsmtStatus
▶ 365-020-050-000	365-020-050-000	D

Deed

Old/Parent APN

1

Asmt	FeeParcel	AsmtStatus	Appraisal Status	AsmtDescription
▶ 365-020-055-000	365-020-055-000	A	Not Valued	9.6 AC POR LOT 26 SUNSET WES
365-020-056-000	365-020-056-000	A	Not Valued	POR LOT 26 SUNSET WEST SUB
365-020-057-000	365-020-057-000	A	Not Valued	POR LOT 26 SUNSET WEST SUB
365-020-058-000	365-020-058-000	A	Not Valued	POR LOT 26 SUNSET WEST SUB
365-020-059-000	365-020-059-000	A	Not Valued	POR LOT 26 SUNSET WEST SUB
365-020-060-000	365-020-060-000	A	Not Valued	POR LOT 26 SUNSET WEST SUB
365-020-061-000	365-020-061-000	A	Not Valued	POR LOT 26 SUNSET WEST SUB
365-020-062-000	365-020-062-000	A	Not Valued	POR LOT 26 SUNSET WEST SUB
365-020-063-000	365-020-063-000	A	Not Valued	POR LOT 26 SUNSET WEST SUB

New/Child APN's

9

Print Screen | gmayeda

Split Log
APN's
Deed



Recording Requested by and
When Recorded Return to:

PLACER, County Recorder
JIM MCCAULEY
DOC- 2012-0029819-00

Rocklin Unified School Dist.
2615 Sierra Meadows Dr.
Rocklin, CA 95677
Attn: Director of Facilities

WEDNESDAY, APR 4, 2012 15:23:05
MIC \$0.00 | AUT \$0.00 | SBS \$0.00
ERD \$0.00 | RED \$0.00 | * \$0.00
ADD \$0.00

Ttl Pd \$0.00 Rcpt # 02184881
olkfpm1fj1/GV/1-4

*See attached email
from mapping.*

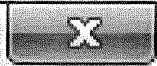
365-020-058-00

For recorder's use only

QUITCLAIM DEED

NOW THEREFORE, for good and valuable consideration, the receipt and adequacy of which are acknowledged, ROCKLIN UNIFIED SCHOOL DISTRICT ("Transferor") does remise, release, and forever quitclaim to BRIAN W. LEBARON AND SANDRA M. LEBARON ("Transferee") all right, title and interest Transferor has in the real property located in Placer County, California, described in attached Exhibit A and Exhibit B and incorporated by reference.

Open



Look in: 2004R0100206



- Recent Places
- Desktop
- Libraries
- Computer
- Network

Name	Date modified	Type
108-08.20120905.VOID.PDF	9/6/2012 9:31 AM	Adobe Ac
108-15.20120905.VOID.PDF	9/6/2012 9:35 AM	Adobe Ac
INDEX 108.20120905.VOID.PDF	9/6/2012 9:50 AM	Adobe Ac
Split Routing of 2004R0100206 7 30 2004...	9/6/2012 11:07 AM	Outlook It



File name:

Files of type: All files (*.*)

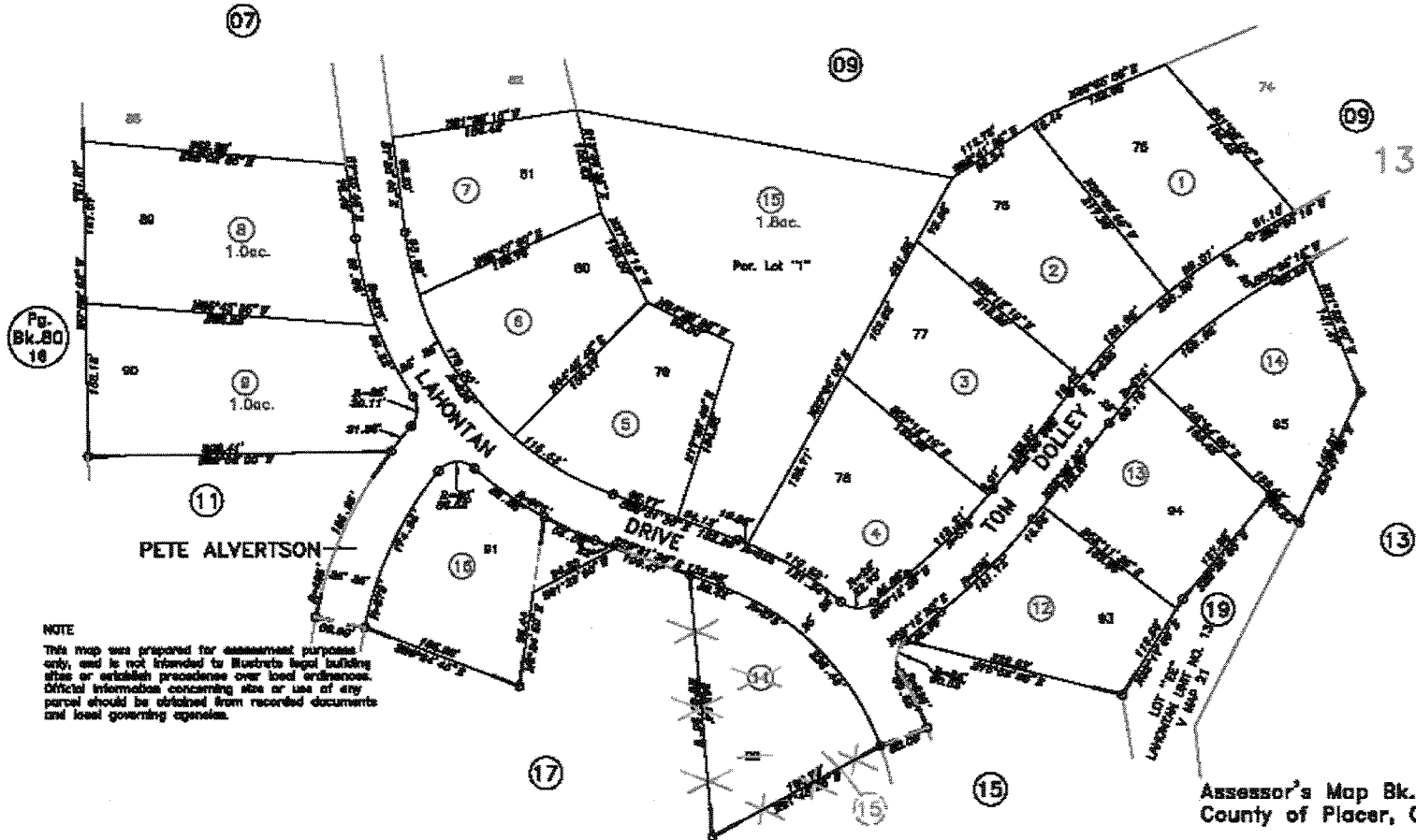
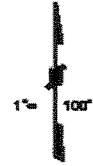
Open

Cancel

POR. S.W. 1\4 SEC. 25, T.17N., R.16E., M.D.B. & M.
 Lahontan Unit No. 2, M.O.R. Bk. T, Pg. 78

108-08

081-104



Pg. Bk. 80
18

NOTE
 This map was prepared for assessment purposes only, and is not intended to constitute legal building sites or establish precedence over local ordinances. Official information concerning site or use of any parcel should be obtained from recorded documents and local governing agencies.

08-08-2012
 10-01-08 - Moved from Bk.80, Pg. 48
 01-08-08
 01-24-07 - 2007
 Formerly 080-180-000-000

NOTE
 All distances on curved lines are chord measurements.

Assessor's Map Bk.108,Pg.08
 County of Placer, Calif.

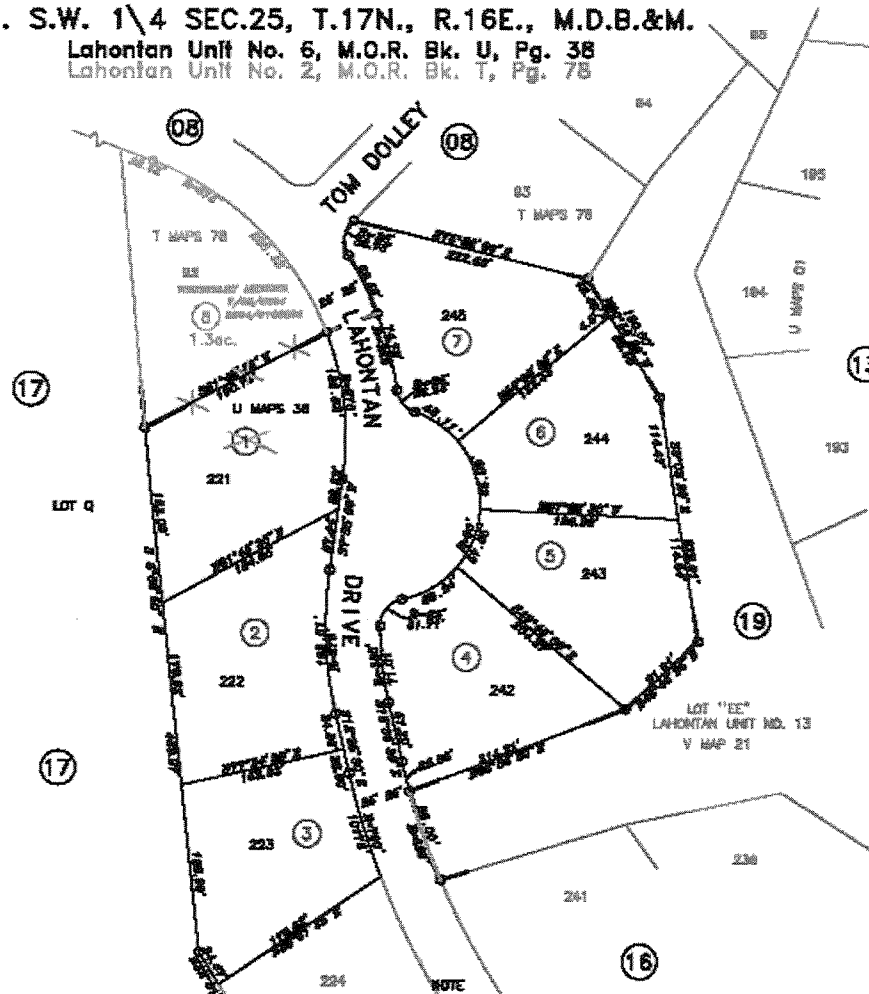
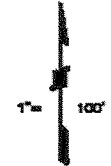
NOTE
 Assessor's Block Numbers Shown in Ellipses.
 Assessor's Parcel Numbers Shown in Circles.

POR. S.W. 1/4 SEC.25, T.17N., R.16E., M.D.B.&M.
 Lahontan Unit No. 6, M.O.R. Bk. U, Pg. 38
 Lahontan Unit No. 2, M.O.R. Bk. T, Pg. 78

108-15

081-147

13



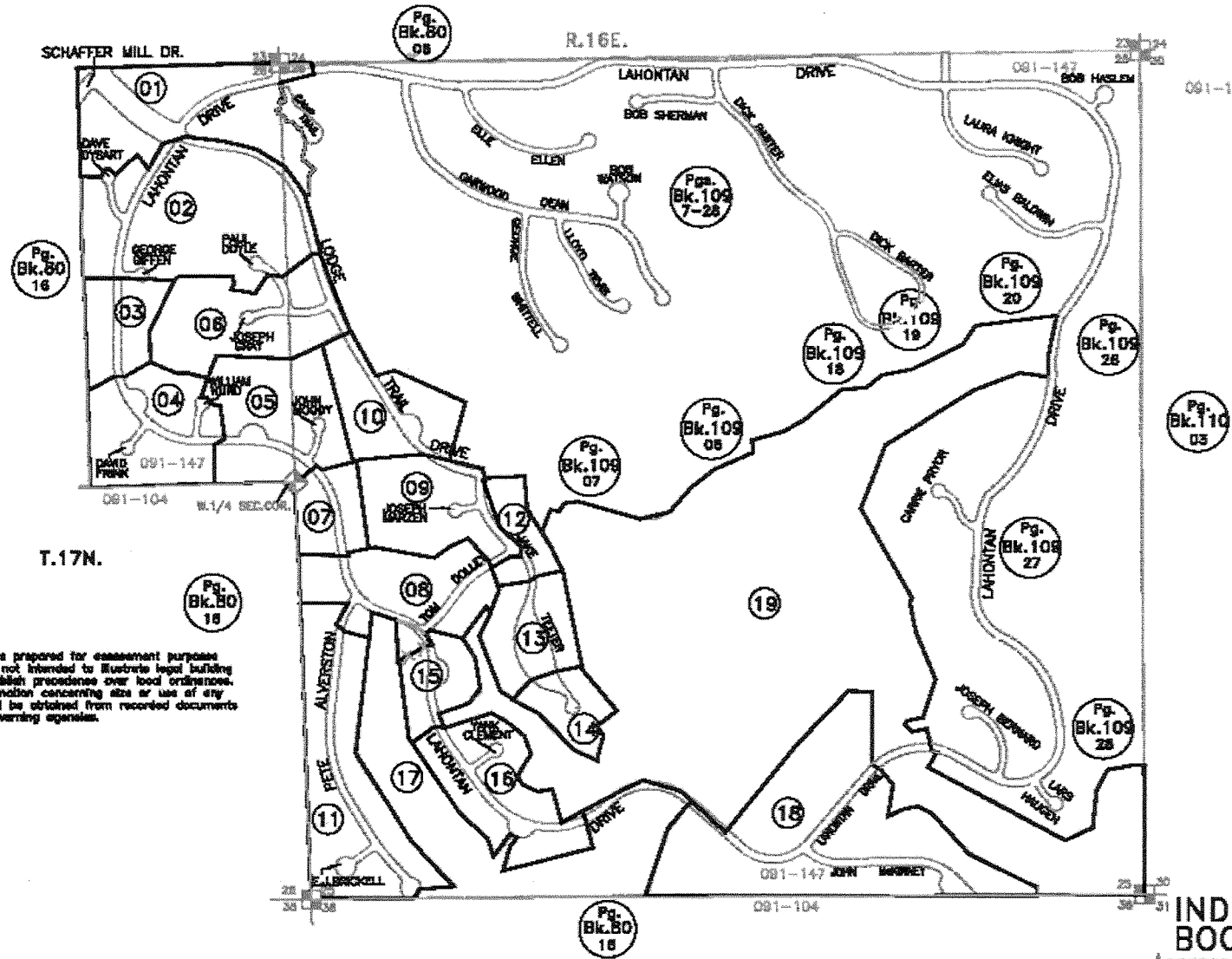
08-08-2013
 10-01-24 Moved from Bk.80, Pg.88
 01-12-24 Bk. 108-015-000
 Formerly Doc-180-015-000

NOTE
 All distances on curved lines are chord measurements.

NOTE
 This map was prepared for assessment purposes only, and is not intended to illustrate legal building sites or establish precedences over local ordinances. Official information concerning size or use of any parcel should be obtained from recorded documents and local governing agencies.

Assessor's Map Bk.108,Pg.15
 County of Placer, Calif.

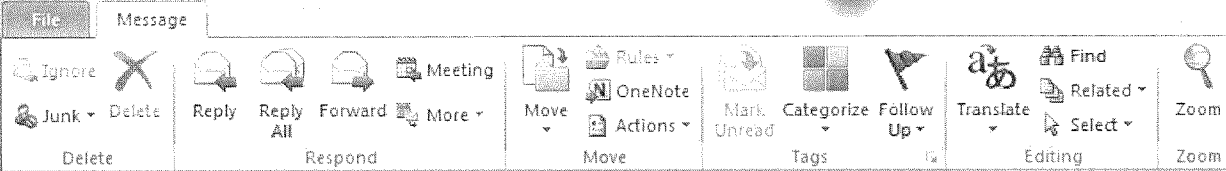
NOTE
 Assessor's Block Numbers Shown in Ellipses.
 Assessor's Parcel Numbers Shown in Circles.



NOTE

This map was prepared for assessment purposes only, and is not intended to illustrate legal building sites or establish precedence over local ordinances. Official information concerning size or use of any parcel should be obtained from recorded documents and local governing agencies.

INDEX MAP
BOOK 108
 Assessor's Map
 County of Placer, Calif.



From: Marcela Ganea
To: Assessor Tahoe; Assessor Mapping; Assessor Ownership; Breann Sober
Cc: Marcela Ganea
Subject: Split Routing of 2004R0100206 7/30/2004

Sent: Thu 9/6/2012 11:07 AM

Split Routing of 2004R0100206 7/30/2004 regarding Book/Page 108-080-011, 108-150-001.
New parcels have been keyed into the system and require your attention.
Upon completion be sure to mark the appropriate checkbox in the Split log to signify the work has been addressed.

[file:\\asrapp\\apps\\$\\SplitLog\\SplitLog.exe](file:\\asrapp\\apps$\\SplitLog\\SplitLog.exe) 2004R0100206

See more about: Marcela Ganea.



Searchable Fields

Cadastral Technicians Initials

MAP TYPES
 Survey
 Deed
 PM (Parcel Map)
 Subdivision
 Condominium
 Internal
 Remap

Split Log ASR

File Edit Reports... Tools Help

2008-2009 Open Items Only <all>

Map Type	Recording Ref	Recording Date	Descr	Subdivision Name	Assigned To	Date Assigned	Date Completed	To GIS
Internal	2008IOWNRG01	7/1/2007	002-013-019, 020		GHM	6/27/2007	7/16/2007	8/1/2007
Internal	2008IOWNRG02	7/1/2007	075-100-027, 035		GHM	7/20/2007	7/20/2007	8/1/2007
Internal	2008IOWRQM01	7/1/2007	097-093-002, 097-100-016					8/01/2007
Internal	2008IOWRQM02	7/1/2007	102-080-009, 011					8/02/2007
Internal			27,034		MMG	8/23/2007	8/23/2007	
Remap			HRU 026		MMG	6/6/2007	6/6/2007	
Remap	2008IREMAP2		110-081-001 THRU 043		MMG			
Internal	2008ISPLID08	1/30/2007	064-141-052		DGV	4/11/2007	6/6/2007	
Internal	2008ISPLID11	2/15/2007	001-032-032		DGV	5/29/2007	5/31/2007	8/02/2007
Internal	2008ISPLID12	2/28/2007	096-252-009		DGV	6/1/2007	6/6/2007	
Internal	2008ISPLID13	2/20/2007	064-141-038		DGV	4/11/2007	6/6/2007	8/02/2007
Internal	2008ISPLID14	3/6/2007	021-272-001, 005		DGV	6/4/2007	6/6/2007	8/01/2007
Internal	2008ISPLID15	3/7/2007	092-010-043, 044		DGV	6/5/2007	6/6/2007	
Internal	2008ISPLID16	3/12/2007	077-031-092		DGV	6/6/2007	6/7/2007	7/19/2007
Internal	2008ISPLIM01	1/12/2007	363-010-091		MMG	3/27/2007	3/27/2007	7/17/2007
Internal	2008ISPLIM02	2/13/2007	017-270(POR RD) (017-270-07		MMG	4/16/2007	4/16/2007	8/03/2007
Internal	2008ISPLIM03	1/18/2007	075-060-031		MMG	4/6/2007	4/6/2007	8/02/2007
Internal	2008ISPLIM04	2/16/2007	490-090-064		MMG	4/30/2007	5/30/2007	7/31/2007

Recording Reference

Parcel Being Split

Division or Task Sort

Fiscal Year: 2008-2009
 Map Type: Internal
 Recording Ref: 2008IOWNRG01
 Recording Date: 7/1/2007
 Descr: 002-013-019, 020
 Deed Ref: [Empty]
 Subdivision Name: [Empty]

Number of APN's to Split: 2
 Number of New APN's: 1

Mapping
 Assigned To: GHM
 Date Assigned: 6/27/2007
 Date Completed: 7/16/2007

GIS
 Date Assigned: 8/01/2007
 Total APN's: 1
 # Completed: 1

WorkItem Status UserID dts
 + Mapping
 + Central Support
 + Business/Uns
 + Exemptions
 + Real Property

Misc. Split Information

New Save Cancel Delete Create Routing E-Mail Item Count = 261 Docs Print Screen

mpts1 Print Screen SShankar

	WorkItem	Status	UserID	dts
[-] Mapping				
<input checked="" type="checkbox"/>	Scanning	Completed	mganea	9/6/2012
<input checked="" type="checkbox"/>	APNs	Completed	mganea	9/6/2012
<input checked="" type="checkbox"/>	Keying	Completed	mganea	9/6/2012
<input checked="" type="checkbox"/>	Builders Exclusion	Completed	SYSTEM	9/6/2012
<input checked="" type="checkbox"/>	E-mail	Completed	mganea	9/6/2012
<input checked="" type="checkbox"/>	Drafting	Completed	mganea	9/6/2012
<input checked="" type="checkbox"/>	To Ownership	Completed	mganea	9/6/2012
<input checked="" type="checkbox"/>	GIS	Completed	gmayeda	9/10/2012
<input type="checkbox"/>	Central Support			
<input type="checkbox"/>	Business/Uns			
<input type="checkbox"/>	Exemptions			

Item Count = 377 DeleteWork Docs Print Screen

Print Screen gmayeda

	WorkItem	Status	UserID	dts
[-] Real Property				
<input type="checkbox"/>	Update Megabyte P	REQUIRED		
<input type="checkbox"/>	Move/Copy Files	REQUIRED		
<input type="checkbox"/>	Move/Copy Notes	REQUIRED		
<input type="checkbox"/>	Valuation	REQUIRED		
<input checked="" type="checkbox"/>	CLCA	Completed	SYSTEM	9/6/2012
<input checked="" type="checkbox"/>	Building Permits	Completed	SYSTEM	9/6/2012
<input checked="" type="checkbox"/>	PI/IREOs	Completed	SYSTEM	9/6/2012
<input type="checkbox"/>	Document Holds	REQUIRED		
<input checked="" type="checkbox"/>	Commercial	Completed	SYSTEM	9/6/2012
<input type="checkbox"/>	Supervisor Review	REQUIRED		

Item Count = 377 DeleteWork Docs Print Screen

Print Screen gmayeda

Task lists ensure that all tasks are completed by division. Some fields are completed by the Split Log automatically, others require the attention of Staff in order to be completed.

APPRAISAL DIVISION

Electronic Worksheet
File View Reports Letters Events Thru... Tools eMail Help

492-010-042-000
492-010-042-000
2011RMRCC020
Split WS

ALL Transfers-DE

- Transfers
- Construction
- Construction-SFR
- Split/Combo/Misc
- Appeals: None select
- Prop8
- CIP
- CIP-SFR

Show... **ALL**

- Prop 60 Hold
- Prop 58 Hold
- COS Hold
- HOLD Status
- EW Worked
- Has Appeal
- Rejected List

Direct Selection

- Orig Asmt
- Asmt
- Doc Num: 2011-_MRCC020:
- Appraiser
- Group
- Use Code

Office: **ALL RES COM**

- RES Orange
- RES Blue
- RES Green
- COM Auburn
- COM Tahoe
- Timeshare
- Manager

✓ SELECT

Drag a column header here to group by that column
Print Grid

Normal Worked
Direct Enrollment Parcel Has Appeal

Office	NC	APR	OriginatingAsmt	Asmt	DocNum	Docf	DocDate	EventDate	Costs	Acres	LandSF	Use	Taxa	Comments1
RES Orange	1040	PZP	492-010-042-000	492-010-042-000	2011RMRCC020	72	2/8/2011	2/8/2011		10.7	0	00	000	Split WS
RES Orange	1040	PZP	492-050-001-000	492-050-001-000	2011RMRCC020	72	2/8/2011	2/8/2011		0	10,687	00	000	Split WS
RES Orange	1040	PZP	492-050-002-000	492-050-002-000	2011RMRCC020	72	2/8/2011	2/8/2011		0	8,838	00	000	Split WS
RES Orange	1040	PZP	492-050-003-000	492-050-003-000	2011RMRCC020	72	2/8/2011	2/8/2011		0	8,297	01	000	Split WS
RES Orange	1040	PZP	492-050-004-000	492-050-004-000	2011RMRCC020	72	2/8/2011	2/8/2011		0	6,794	01	000	Split WS
RES Orange	1040	PZP	492-050-005-000	492-050-005-000	2011RMRCC020	72	2/8/2011	2/8/2011		0	6,359	01	000	Split WS
RES Orange	1040	PZP	492-050-006-000	492-050-006-000	2011RMRCC020	72	2/8/2011	2/8/2011		0	6,300	01	000	Split WS
RES Orange	1040	PZP	492-050-007-000	492-050-007-000	2011RMRCC020	72	2/8/2011	2/8/2011		0	6,300	01	000	Split WS
RES Orange	1040	PZP	492-050-008-000	492-050-008-000	2011RMRCC020	72	2/8/2011	2/8/2011		0	7,288	00	000	Split WS
RES Orange	1040	PZP	492-050-009-000	492-050-009-000	2011RMRCC020	72	2/8/2011	2/8/2011		0	6,658	00	000	Split WS
Total:70				EW Wkd:0	MPTS Wkd:70					UnWkd:0				

FeeParcel	Asmt	DocNum	DocCode	EventDate	Prior S/P	Work	Comments1
492-010-042-000	492-010-042-000	2011RMRCC020	72	2/8/2011		Valued	Split WS
492-010-042-000	990-309-528-000	2012R0062126	01	7/12/2012	3,150,000	Valued	Group xfr 7/12/12. Allocation \$3,150,000

Work
Update Detail
Phys Char
Deed
PCOR
Map/Cost/RC
Appraisals
Notes/Memos
Value History

Work Area

Assessment	492-010-042-000	Current Value (Land/Imp)	3150000	0	Condition	
Doc Number	2011RMRCC020	New Value	0		Conf Cd	
Taxability	0 Apr Cd, 19	Land/Imp	0	0	Adj. price	0
Comments 1/2					Adj Rsn Cd	

EW recs = 0
Event Dates less than 1/1/2013
Worked
0 min 1 sec

Electronic Worksheet

File View Reports Letters Events Thru... Tools eMail Help

492-010-042-000 | 492-010-042-000 | 2011RMRCC020 | Split WS

MAPS	
<input checked="" type="checkbox"/>	492-01.20110323.VOID
<input type="checkbox"/>	492-01.20101220A.VOID
<input type="checkbox"/>	492-01.20101220B.VOID
<input type="checkbox"/>	492-01.20100126.VOID
<input type="checkbox"/>	492-01.20090304.VOID
<input type="checkbox"/>	492-01.20071214.VOID

ROLL CORRECTIONS LOG

MAPPING DOCS	
<input type="checkbox"/>	2010RMRCC020.pdf
<input type="checkbox"/>	492-01.20110323.VOID.PDF
<input type="checkbox"/>	492-05.pdf
<input type="checkbox"/>	492-06.pdf
<input type="checkbox"/>	Copy of EW_05_05_2011_event date.docx
<input type="checkbox"/>	email routing.pdf
<input type="checkbox"/>	INDEX 492.20110323.VOID.PDF

ROLL CORRECTIONS

COSTS/DRAWINGS	

REVIEWS
<input type="checkbox"/> EW.exe
<input type="checkbox"/> EW.OLD.EXE
<input type="checkbox"/> EWApproval.exe
<input type="checkbox"/> EWApproval.OLD.EXE
<input type="checkbox"/> EWTransmit.exe

OWNERSHIP / PARTIAL INTEREST	

OWNERSHIP / PARTIAL INTEREST

GIS LINK

Work | Update Detail | Phys Char | Deed | PCOR | Map/Cost/RC | Appraisals | Notes/Memos | Value History

Work Area	Assessment	492-010-042-000	Current Value (Land/Impr)	3150000	0	Condition	<input type="text"/>	
	Doc Number	2011RMRCC020	New Value	0		Conf Cd	<input type="text"/>	
	Taxability	0	Apr Cd	19	Land/Impr	0	Adj. price	0
	Comments 1/2					Adj Rsn Cd	<input type="text"/>	